

MICRO SWITCH

A DIVISION OF MINNEAPOLIS-HONEYWELL REGULATORS COMPANY
MINNEAPOLIS, MINNESOTA

FED. MFR. CODE 91929

SWITCH-BASIC

CATALOG LISTING

IOBS210

IOBS210

M

DRAWING NUMBER

ISSUE

9

REPLACES

RELEASE NO. SR 9212

CHECK

CHECK

CHECK

CHECK

CHECK

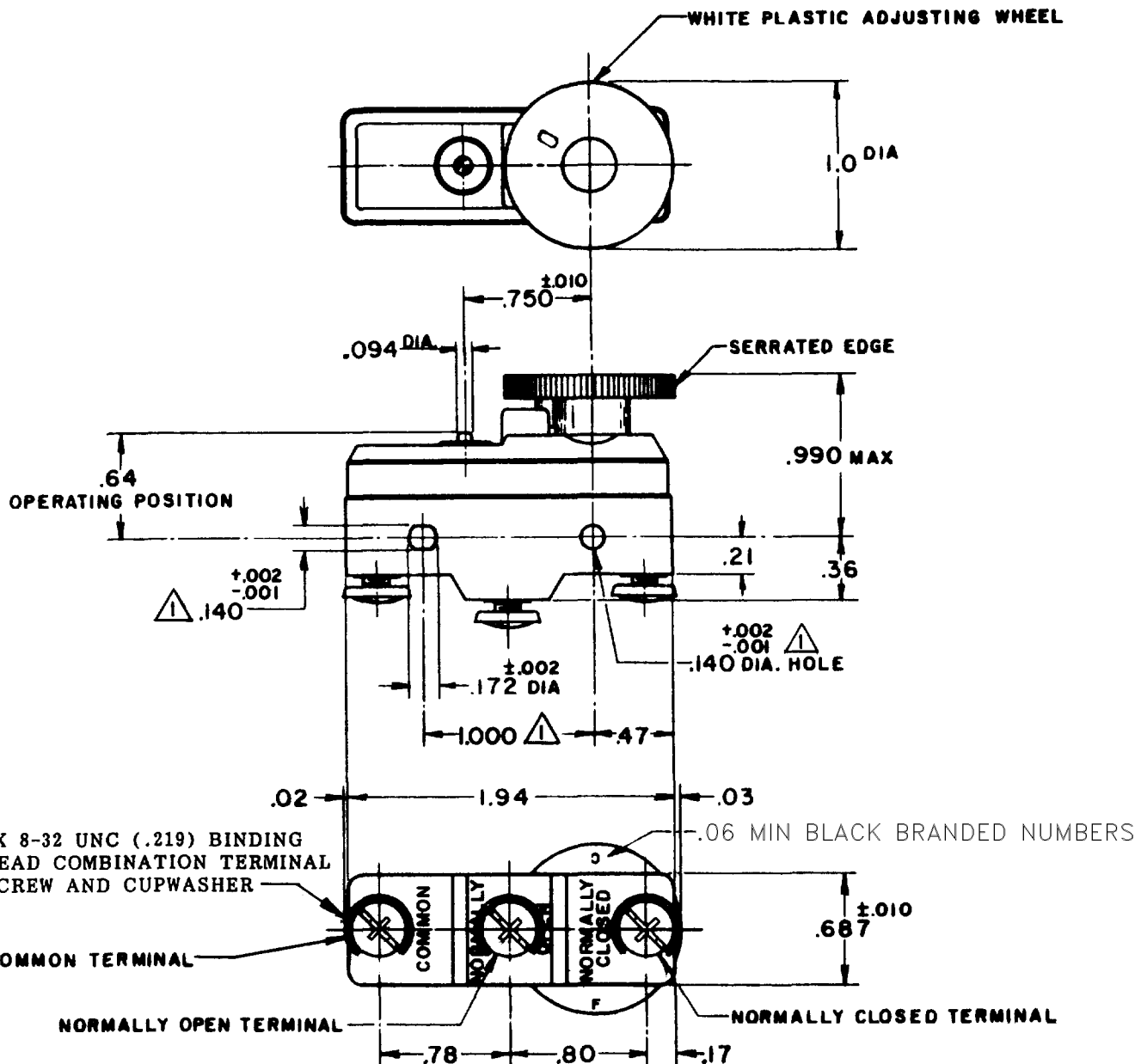
CHECK

CHECK

CHECK

CHECK

CHECK



NOTE:

- △ MOUNTING HOLES WILL ACCEPT PINS OR SCREWS OF .139 MAX. DIA. ON 1.000^{±.002} CENTERS.
- 2-DIAL WHEEL IS SHOWN AT THE MAX SETTING OF BREAK DISTANCE.
- 3-DIAL WHEEL ROTATION 300°

THIS DRAWING COVERS A PROPRIETARY ITEM AND IS THE PROPERTY OF MICRO SWITCH, A DIVISION OF MINNEAPOLIS-HONEYWELL REGULATOR CO. THIS DRAWING IS NOT TO BE COPIED OR USED WITHOUT THE APPROVAL OF MICRO SWITCH.

CHARACTERISTICS (AT MIN SETTING)

AT MIN SETTING
 OPERATING FORCE ----- 11-20 OZ
 RELEASE FORCE ----- 10 OZ MIN
 DIFFERENTIAL TRAVEL ----- .0015-.0025

AT MAX SETTING
 DIFFERENTIAL TRAVEL ----- .007 MIN
 OVERTRAVEL ----- .010 MIN

ELECTRICAL DATA

CONTACT ARRANGEMENT
 S P D T

L17

20A 125, 250 OR 480 VAC
 3/4 HP 125 VAC, 1 1/2 HP 250 VAC



SCALE FULL

DO NOT SCALE PRINT

UNLESS OTHERWISE SPECIFIED

DIMENSIONS ARE IN INCHES

TOLERANCES ARE:

ONE PLACE	(.0)	±.000
TWO PLACE	(.00)	±.010
THREE PLACE	(.000)	±.005
ANGLES		± 10°

WEIGHT

FORMTEK

DRAWN

31 AUG 60

MBF

3/AUG-60

G-CH

31/AUG-60

G-CH

31/AUG-60

G-CH

31/AUG-60

G-CH