

**Technical specification :**

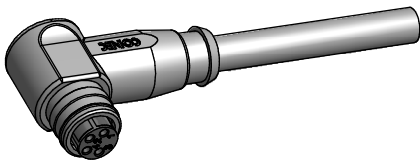
Rated voltage: IEC 61076-2-104	30 V
Current rating: IEC 61076-2-104	3 A at 40°C
Insulation resistance: IEC 60512	>=100 MΩ
Pollution degree: IEC 60664-1	3/2
Degree of protection: IEC 60529	IP 67, in mated condition
Temperature range: IEC 60664-1	-30°C ... +80°C
Mating cycles: IEC 60512-9a	>=100

**Materials:**

Contact:	CuZn
Contact plating:	Nickel, gold plated
Contact carrier:	TPU GF, UL 94
Moulding body:	TPU, UL 94, grey

**Contact assignment:**

- 1) brown \_\_\_\_\_
- 2) white \_\_\_\_\_
- 3) blue \_\_\_\_\_
- 4) black \_\_\_\_\_



Part no:	Description:	Length L:	Cable:
42-10112	SAL - 8 - RKWS4 - 2 / A1	2m	PVC, grey, 4x0,25mm <sup>2</sup> Cable: 781-A12400
42-10113	SAL - 8 - RKWS4 - 3 / A1	3m	
42-10114	SAL - 8 - RKWS4 - 5 / A1	5m	
42-10115	SAL - 8 - RKWS4 - 10 / A1	10m	
42-xxxxx	SAL - 8 - RKWS4 - ... / A1	x	

D see data sheet cable

DO NOT ALTER CAD DRAWING BY HAND Directive 2002/95/EC RoHS compliant	Index: a 15.03.2011 VF Ä3941 data sheet revised	dim. in mm		title: <b>Female connector M8x1 angled snap</b>	
		date	name		
	tolerance of cable: L ≤ 4m: L + 40mm L > 4m: L + 1%	drawn	10.10.07	Franz	dwg no: <b>42K1A032</b>
	general tolerance: 0 ± 0,50mm 0,0 ± 0,25mm 0,00 ± 0,10mm	appd.	10.10.07	Mankopf	
					part no: see table
<small>THIS DRAWING MAY NOT BE COPIED OR REPRODUCED IN ANY WAY, AND MAY NOT BE PASSED ON TO A THIRD PARTY WITHOUT WRITTEN PERMISSION. OWNERSHIP AND COPYRIGHT OF CONEC GmbH</small>					