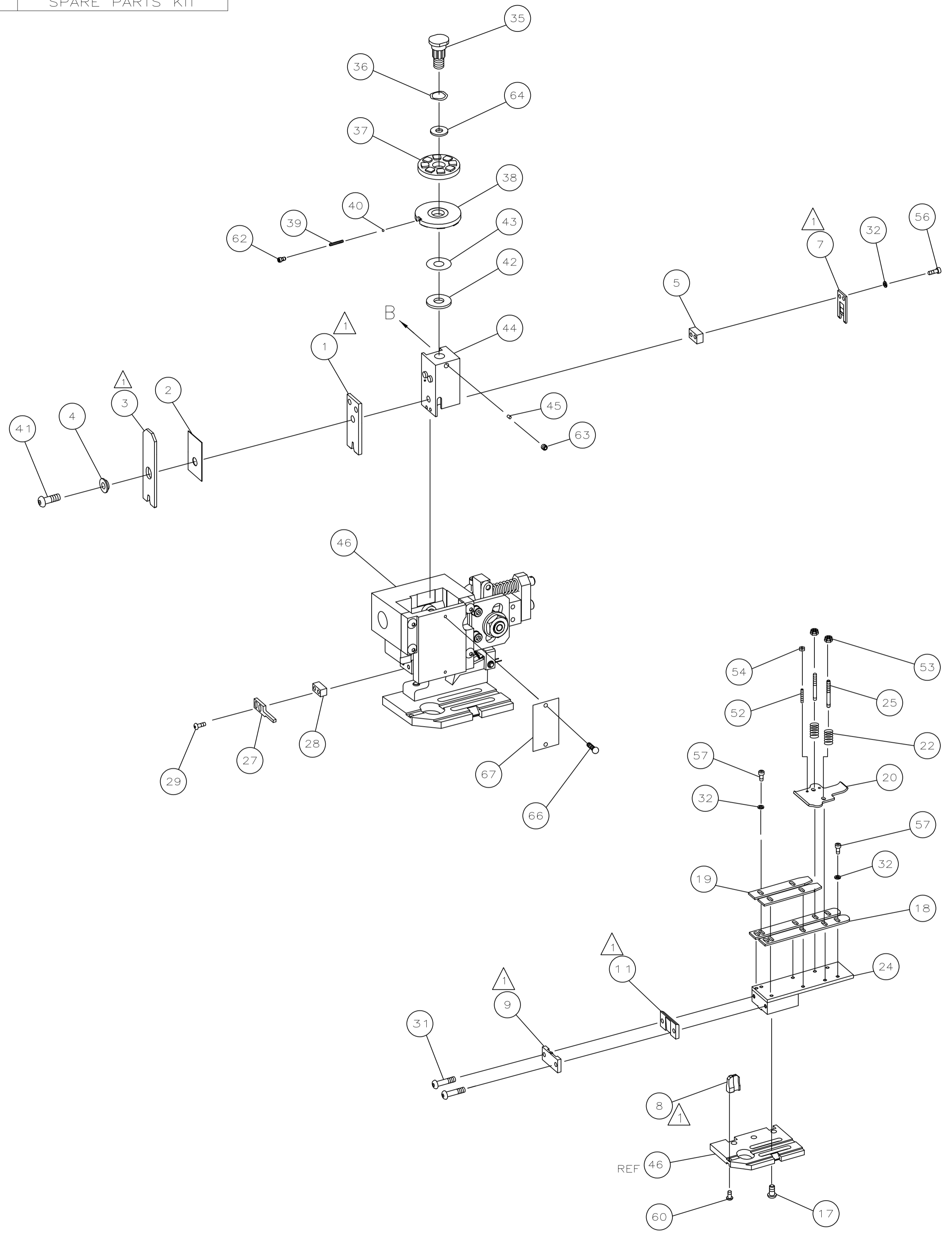
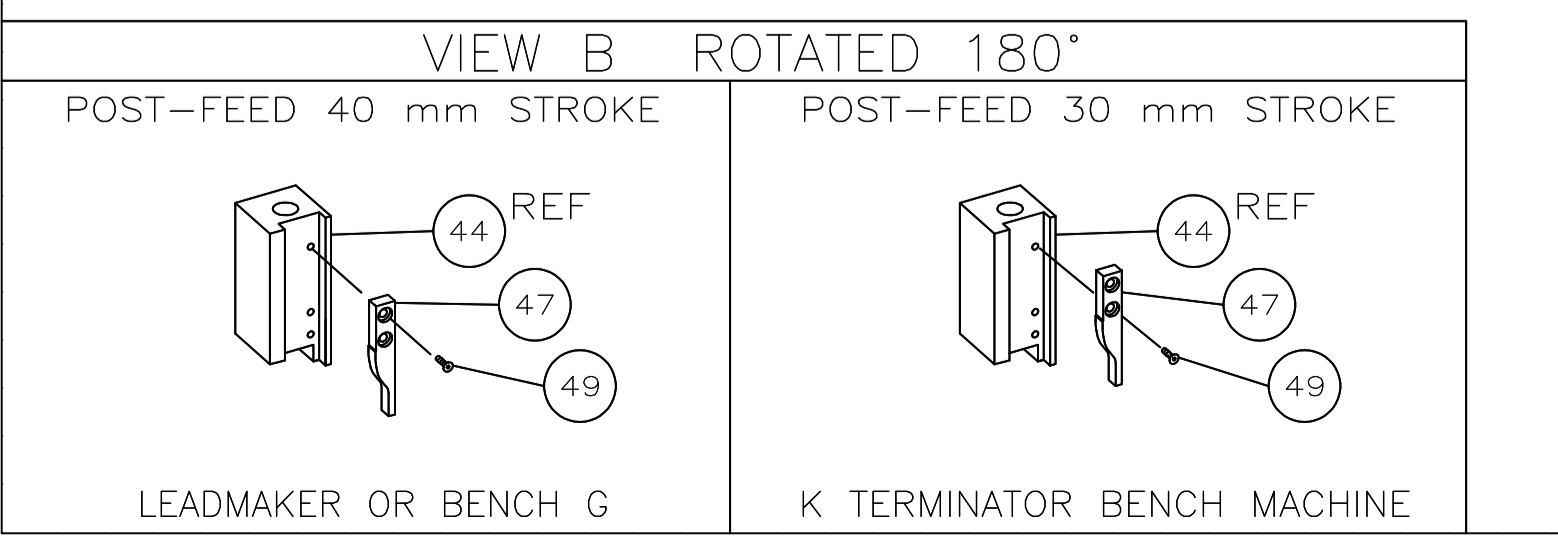


PART NUMBER	REV	FIRST USED	TERMINATOR	FEED TYPE	DESCRIPTION
1339699-1	C		- BENCH & LEADMAKER	MECH POST FEED	HD-I APPLICATOR
7-1339699-1	C		- BENCH & LEADMAKER	MECH POST FEED	-1 AND SPARE PARTS
7-1339699-7	A		-	-	SPARE PARTS KIT

CRIMP DATA AMP TERMINAL AMP CRIMP SPECS			
TERMINAL NAME: RING TONGUE			
CRIMP	SIZE	TYPE	RANGE
WIRE	4.57 [.180 IN]	F	2.00-5.00mm <sup>2</sup>
INSUL	6.35 [.250 IN]	0	2.54-4.06 [.100-.160 IN]
WIRE STRIP LENGTH		APPL INSTRUCTION	
4.80-5.60 [.189-.220 IN]		408-8323	
TERMINAL APPL SPEC		FEED	
114-3118		20.75 [.816 IN]	
TERMINALS APPLIED			
140533	-	-	-
140534	-	-	-
140535	-	-	-
140536	-	-	-
140537	-	-	-
140538	-	-	-
140541	-	-	-
140542	-	-	-
WIRE SIZE mm <sup>2</sup> AWG	CRIMP HEIGHT	PIN PN AND LENGTH [IN]	
5.00mm <sup>2</sup>	2.74 ±0.05 [.108 ±.002 IN]	4-354778-1 [.2700]	
3.50mm <sup>2</sup>	2.61 ±0.05 [.103 ±.002 IN]	5-354778-1 [.2750]	
2.50mm <sup>2</sup>	2.51 ±0.05 [.099 ±.002 IN]	5-354778-9 [.2790]	
2.00mm <sup>2</sup> OR 14AWG	2.46 ±0.05 [.097 ±.002 IN]	6-354778-3 [.2810]	

SET UP GAGE 458638-3	LAYOUT L1339699
-------------------------	--------------------

- RECOMMENDED SPARE PARTS.
- GREASE RAM, CAM, CAM FOLLOWER AND FEED ROD LIGHTLY.
  - LUBRICATE DAILY PER THE APPLICATOR INSTRUCTION SHEET SUPPLIED WITH THE APPLICATOR.



QTY REQD PER ASSY	PART NO	DESCRIPTION	ITEM NO	
-	1	1339699	PRINT, APPLICATOR LOG SHEET	73
-	1	1338705-2	DOCUMENTATION PACKAGE	72
-	-	-	-	71
-	-	-	-	70
-	-	-	-	69
-	-	-	-	68
-	1	461264-1	PLATE, IDENTIFICATION	67
-	2	21017-2	SCR,DRIVE(#2X.19)ID PLATE	66
-	-	-	-	65
-	1	986950-1	WASHER, FLAT PRECISION	64
-	1	3-18031-0	SCR,SKT SET(M6X6)RAM	63
-	1	18023-9	SCR,SKT CAP(M4X6)CP DSC	62
-	-	-	-	61
-	1	18024-7	SCR,BHC(M4X10)ANVIL	60
-	-	-	-	59
-	-	-	-	58
-	6	18023-9	SCR,SHC(M4X6)STRIP GUIDE	57
-	2	1-18023-2	SCR,SHC(M4X12)SLUG BLADE	56
-	-	-	-	55
-	2	18029-1	NUT,HEX(M3)DRAG	54
-	2	986965-1	NUT,HEX_SL(M4)DRAG STUD	53
-	2	2-18032-2	SCR,SKT SET(M3X10)DRAG	52
-	-	-	-	51
-	-	-	-	50
-	1	18024-3	SCR,BHC(M3X10)CAM	49
-	-	-	-	48
-	1	1338676-1	CAM, POST-FEED 30 & 40 mm ST	47
-	1	1338662-2	APPLICATOR, BASIC (SUBASSY)	46
-	1	690191-1	PLUG, NYLON	45
-	1	1320998-1	RAM	44
-	1	690125-1	WASHER, LAMINATED	43
-	1	690124-1	WASHER, RAM	42
-	1	2-18024-6	SCREW,BHC(M8X25)CRIMPER	41
-	1	23241-1	BALL, STEEL	40
-	1	2-22278-7	SPRING, COMPRESSION	39
-	1	1320922-1	DISC, INSULATION	38
-	1	354777-1	WIRE DISC, PLASTIC	37
-	1	22480-5	WASHER, SPRING	36
-	1	690212-1	POST, RAM	35
-	-	-	-	34
-	-	-	-	33
-	8	18025-2	WASHER,LOCK(M4)SHEAR BL	32
-	2	1-18024-0	SCR,BHC(M4X20)SHEAR PL	31
-	-	-	-	30
-	2	18024-8	SCR,BHC(M4X12)STRIPPER	29
-	1	3-690451-2	SPACER, STRIPPER	28
-	1	240639-1	STRIPPER	27
-	-	-	-	26
-	2	1320906-1	DRAG, STUD	25
-	1	1320995-1	STRIP GUIDE	24
-	-	-	-	23
-	2	4-22281-1	SPRING, DRAG	22
-	-	-	-	21
-	1	1338665-1	DRAG, STOCK	20
-	2	1338664-1	GUIDE, UPPER STRIP	19
-	2	1338663-3	GUIDE, LOWER STRIP	18
-	4	1-18024-8	SCR,BHC(M6X12)STRIP GD PL	17
-	-	-	-	16
-	-	-	-	15
-	-	-	-	14
-	-	-	-	13
-	-	-	-	12
-	1	240644-1	PLATE, REAR SHEAR	11
-	-	-	-	10
-	1	690482-5	PLATE, FRONT SHEAR	9
-	1	2-1333223-0	ANVIL	8
-	1	690474-5	BLADE, SLUG	7
-	-	-	-	6
-	1	7-240641-1	SPACER, SLUG BLADE	5
-	1	238009-7	SPACER, BLOCK CRIMPER	4
-	1	456135-1	CRIMPER, INSULATION	3
-	1	455888-1	SPACER, CRIMPER	2
-	1	456428-3	CRIMPER, WIRE	1
-77	-71	-1	PART NO	ITEM NO

THIS DRAWING IS A CONTROLLED DOCUMENT.

DN M. CLIFFORD 24FEB03  
 CHK -  
 Tyco Electronics Corporation  
 Harrisburg, PA 17105-3608

APVD F. BACKHURST 24FEB03  
 NAME  
 END FEED HD-I APPLICATOR

TOLERANCES UNLESS OTHERWISE SPECIFIED:  
 0. PLC ± -  
 1. PLC ± -  
 2. PLC ± -  
 3. PLC ± -  
 4. PLC ± -  
 ANGLES ± -

SIZE CAGE CODE DRAWING NO RESTRICTED TO  
 A1 00779 1339699 -

CUSTOMER DRAWING SCALE - SHEET 1 OF 1 REV C