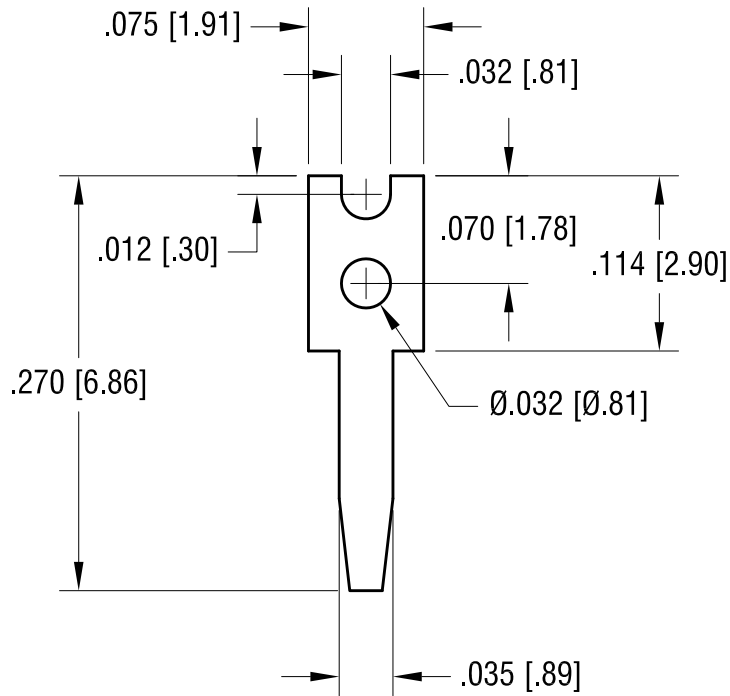


THIS DOCUMENT IS THE PROPERTY OF  
KEYSTONE ELECTRONICS CORP. AND  
SHALL NOT BE REPRODUCED, DISTRIBUTED  
OR USED AS A BASIS FOR MANUFACTURE  
WITHOUT PRIOR WRITTEN PERMISSION  
FROM KEYSTONE ELECTRONICS CORP.

ACTUAL SIZE



**KEYSTONE ELECTRONICS CORP.**

www.keyelco.com • ASTORIA, N.Y. 11105-2017 • Tel (718) 956-8900

PART NAME

PC TEST POINT TERMINAL

MATERIAL

.020 [0.50] TH'K BRASS ALLOY 260

FINISH

MATTE TIN PLATE

DRN BY

BOONE

DATE

11.3.93

APP'D

LN

SCALE

8X

TOLERANCES

INCH [MM]  
DECIMAL ± .005 [± 0.13]

CODE

ANGULAR ± 1°

UNLESS OTHERWISE SPECIFIED

C

DWG NO.

1031

4.03.14

CHANGE AS PER ECN 14-040

B

6.30.09

CHANGE AS PER ECN 09-091

A

DATE

DESCRIPTION

REV.