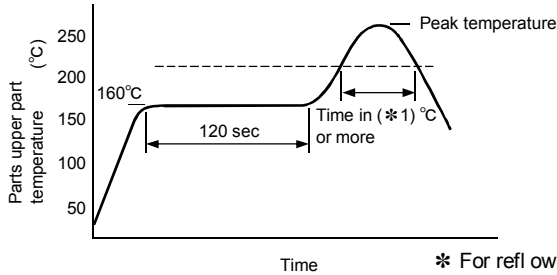


Reflow guaranteed condition

● RoHS compliant

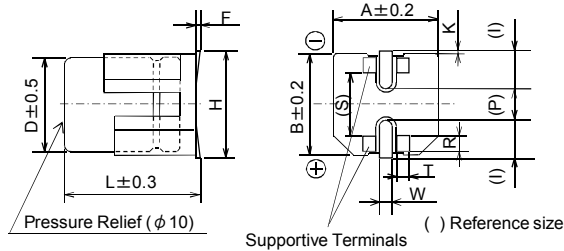


| Reflow No. | Fig. (5) | Fig. (6) | |
|--------------------------|-------------------------------------|-------------------------------|-------------------------------|
| Category | $\phi 5, \phi 6.3$ | $\phi 8, \phi 10$ | |
| Peak temperature | 260°C (255°C) | 245°C | 260°C |
| Time in peak temperature | $\geq 250^\circ\text{C}$ 5 s (10 s) | $\geq 240^\circ\text{C}$ 10 s | $\geq 250^\circ\text{C}$ 5 s |
| Time in (*1) °C or more | $\geq 230^\circ\text{C}$ 30 s | $\geq 230^\circ\text{C}$ 30 s | $\geq 230^\circ\text{C}$ 30 s |
| | $\geq 217^\circ\text{C}$ 40 s | $\geq 217^\circ\text{C}$ 40 s | $\geq 217^\circ\text{C}$ 40 s |
| | $\geq 200^\circ\text{C}$ 70 s | $\geq 200^\circ\text{C}$ 70 s | $\geq 200^\circ\text{C}$ 70 s |
| Time of reflow | 2 times | 2 times | 1 time |

* For reflow, use a thermal condition system such as infrared radiation (IR) or hot blast.
 * Panasonic have several series available for pure Tin terminal and ZVEI reflow based on J-STD-020D (JEDEC). (Please contact sales for details.)

Dimensions (Vibration-proof products)

* The size and shape are different from standard products. Please inquire details of our company.



(Unit : mm)

| Size code | ϕD | L | A, B | H max. | F | I | W |
|-----------|----------|------|------|--------|------------|-----|---------|
| F | 8.0 | 10.5 | 8.3 | 10.0 | 0 to +0.15 | 3.4 | 1.2±0.2 |
| G | 10.0 | 10.5 | 10.3 | 12.0 | 0 to +0.15 | 3.5 | 1.2±0.2 |

| Size code | P | K | R | S | T |
|-----------|-----|---------|---------|---------|---------|
| F | 3.1 | 0.7±0.2 | 0.7±0.2 | 5.3±0.2 | 1.3±0.2 |
| G | 4.6 | 0.7±0.2 | 0.7±0.2 | 6.9±0.2 | 1.3±0.2 |

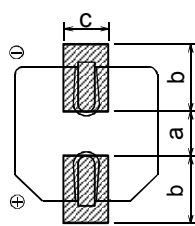
Land / Pad Pattern

The circuit board land/pad pattern size for chip capacitors is specified in the following table. The land pitch influences installation strength and consider it.

Land space

● Standard products

(Unit : mm)

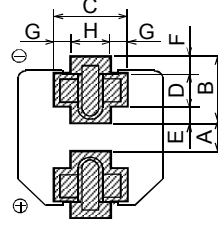


| Size | a | b | c |
|-----------------------------|-----|-----|-----|
| C : $\phi 5 \times L5.8$ | 1.5 | 2.8 | 1.6 |
| D : $\phi 6.3 \times L5.8$ | 1.8 | 3.2 | 1.6 |
| D8 : $\phi 6.3 \times L7.7$ | 1.8 | 3.2 | 1.6 |
| F : $\phi 8 \times L10.2$ | 3.1 | 4.0 | 2.0 |
| G : $\phi 10 \times L10.2$ | 4.6 | 4.1 | 2.0 |

* When size "a" is wide, back fillet can be made, decreasing fitting strength.

● Vibration-proof products

(Unit : mm)



| Size | A | B | C | D |
|----------------------------|-----|-----|-----|-----|
| F : $\phi 8 \times L10.5$ | 2.7 | 4.0 | 4.7 | 1.3 |
| G : $\phi 10 \times L10.5$ | 3.9 | 4.4 | 4.7 | 1.3 |

| Size | E | F | G | H |
|----------------------------|-----|-----|-----|-----|
| F : $\phi 8 \times L10.5$ | 1.0 | 1.7 | 1.1 | 2.5 |
| G : $\phi 10 \times L10.5$ | 1.2 | 1.9 | 1.1 | 2.5 |

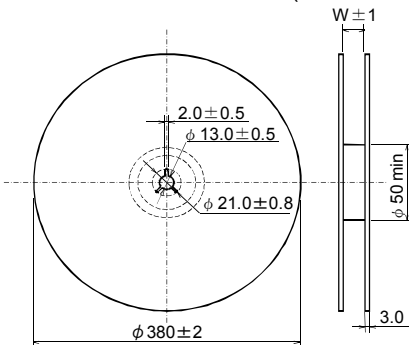
* When size "A" is wide, back fillet can be made, decreasing fitting strength.

* Take mounting conditions, solderability and fitting strength into consideration when selecting parts for your company's design.

Packaging Specifications

● Reel Dimensions in mm (not to scale)

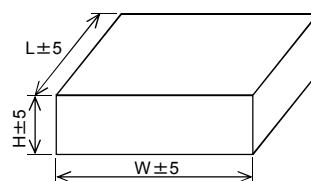
(Unit : mm)



| Size code | W |
|-----------|----|
| C | 14 |
| D, D8 | 18 |
| F, G | 26 |

● Dimensions of Outer Carton Box

(Unit : mm)



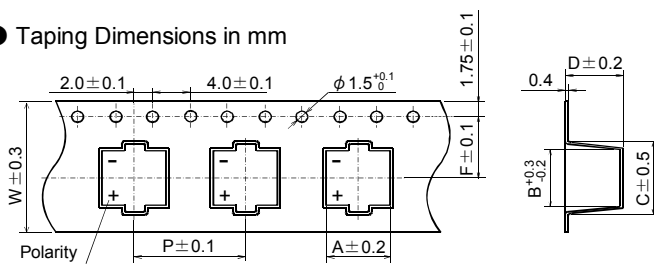
| Size code | H | W, L |
|-----------|-----|------|
| C | 220 | 395 |
| D, D8 | 250 | 395 |
| F, G | 220 | 395 |

● Min. Packing Quantity

| Size code | Min. Packing Q'ty pcs. |
|-----------|------------------------|
| C | 1000 |
| D, D8 | 900 |
| F, G | 500 |

● Taping Dimensions in mm

(Unit : mm)



| Size code | A | B | C | D | P | F | W |
|-----------|------|------|------|------|------|------|------|
| C | 5.7 | 5.7 | 8.0 | 6.4 | 12.0 | 5.5 | 12.0 |
| D | 7.0 | 7.0 | 9.0 | 6.4 | 12.0 | 7.5 | 16.0 |
| D8 | 7.0 | 7.0 | 9.0 | 8.4 | 12.0 | 7.5 | 16.0 |
| F | 8.7 | 8.7 | 12.5 | 11.0 | 16.0 | 11.5 | 24.0 |
| G | 10.7 | 10.7 | 14.5 | 11.0 | 16.0 | 11.5 | 24.0 |

* Ask factory for technical specifications.