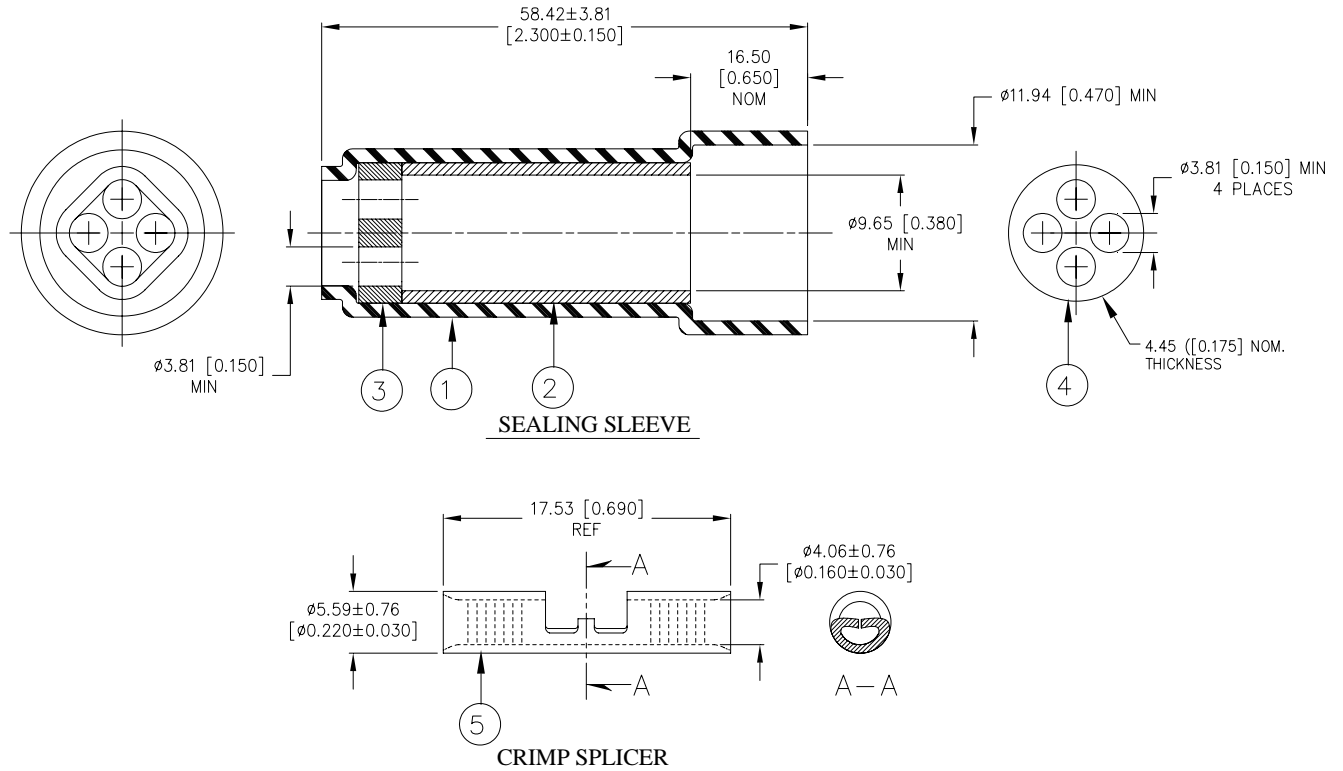


CUSTOMER DRAWING



MATERIALS

1. INSULATION SLEEVE: Heat-shrinkable, transparent blue, radiation cross-linked modified polyvinylidene fluoride.
2. MELTABLE INSERT: Low outgassing immersion resistant thermoplastic, color-natural.
3. MULTI-HOLE INSERT: Low outgassing immersion resistant thermoplastic, color-yellow.
4. SEPARATE MULTI-HOLE INSERT: Low outgassing immersion resistant thermoplastic, color-yellow.
5. CRIMP SPLICER: Base Metal: Copper Alloy 110 per ASTM B-152.
Plating: Nickel-plated per SAE AMS-QQ-N-290.
Wire Size Range: 2.62 – 6.64mm² (5180 – 13100 CMA, 12 – 10 AWG) Solid or Stranded.

APPLICATION

1. This device is designed to provide immersion resistant multi-wire splices – 1 to 8 wires each end having a combined CMA (each side) between 5180 and 13110 and insulation rated for at least 135°C.
2. Crimp splicer to be installed with AMP 46447 (or equivalent) tool. Sealing sleeve may be installed with convection heaters.

<b style="font-size: 1.2em; vertical-align: middle;">Tyco Electronics		300 Constitution Dr Menlo Park, CA 94025, U.S.A.	TITLE: IN-LINE CRIMP SPLICE, MULTI-WIRE 12-10 AWG, NICKEL PLATED		
Unless otherwise specified dimensions are in millimeters. [Inches dimensions are shown in brackets]		Raychem Devices	DOCUMENT NO.: D-436-0099		
TOLERANCES: 0.00 N/A 0.0 N/A 0 N/A	ANGLES: N/A ROUGHNESS IN MICRON	Tyco Electronics reserves the right to amend this drawing at any time. Users should evaluate the suitability of the product for their application.		REV: B	DATE: March 26, 2010
REVISED BY: UNGUYEN	CAGE CODE: 06090	ECO NUMBER: ECO-10-006476		SCALE: NTS	SIZE: A
			SHEET: 1 of 1		