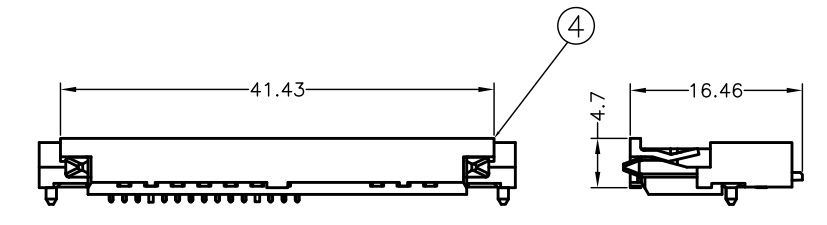
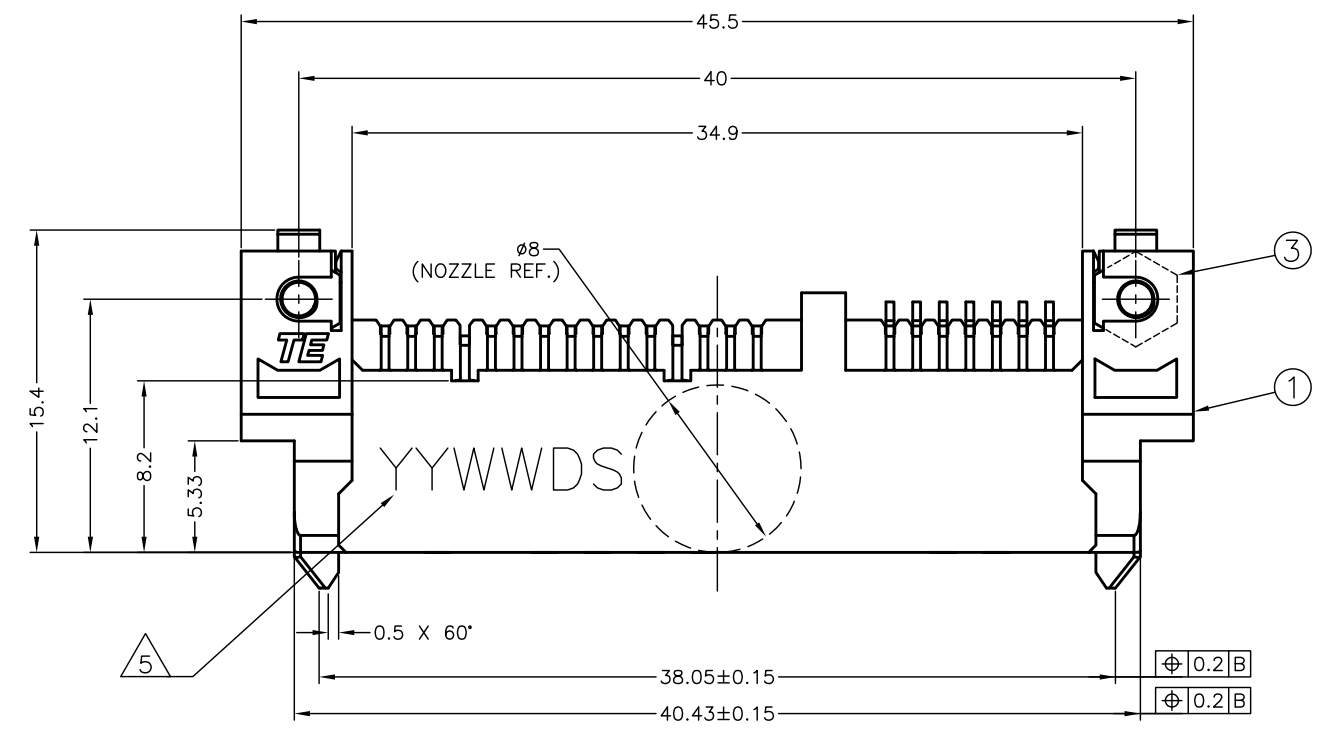


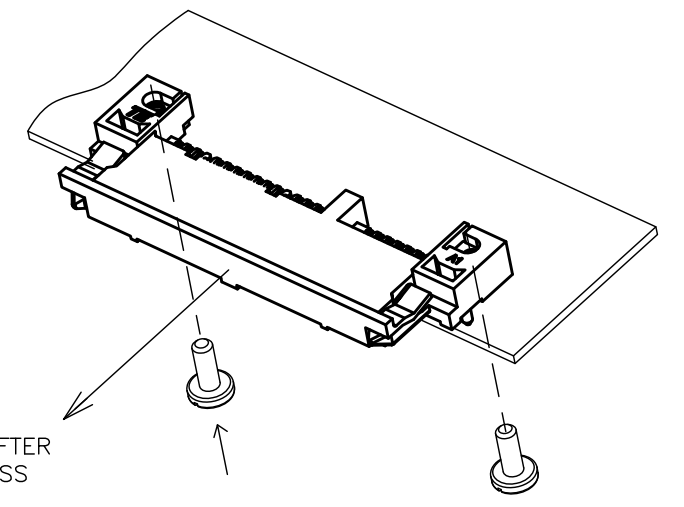
THIS DRAWING IS UNPUBLISHED. RELEASED FOR PUBLICATION
 © COPYRIGHT By - ALL RIGHTS RESERVED.

| LOC | DIST | REVISIONS | | DATE | DWN | APVD |
|-----|------|-----------|-----|-------------|----------|-----------|
| DW | | P | LTR | DESCRIPTION | | |
| | | A | | RELEASED | 20CT2013 | V.P. D.H. |

- MATERIAL:
 HOUSING: HIGH TEMPERATURE THERMOPLASTIC
 UL94V-0, COLOR:BLACK
 CONTACT: COPPER ALLOY
 M2 NUT: COPPER ALLOY
 CAP: HIGH TEMPERATURE THERMOPLASTIC
 UL94V-0
 - FINISH:
 CONTACT: GOLD FLASH 0.13µm PLATING ON CONTACT AREA,
 MATTE-TIN PLATING 2.5µm ON SOLDER TAILS.
 NICKEL UNDER PLATING 1.3µm OVER ALL.
 - MEET HALOGEN FREE REQUIREMENT:
 Cl 900 ppm MAX.
 Br 900 ppm MAX.
 Cl+Br 1500 ppm MAX.
 EU ROHS-RELATED RESTRICTED SUBSTANCE SPEC IN
 HOMOGENEOUS MATERIAL REFER TO TEC-138-702
 REV.G:
 LEAD < 1000PPM
 CADMIUM < 100PPM
 MERCURY < 1000PPM
 CHROMIUM VI < 1000PPM
 PBB <1000PPM
 PBDE < 1000PPM
- 4 M2 SCREW TORQUE: 2 kgf-cm
 SCREW LENGTH FOR REFERENCE
- 5 DATE CODE
 Y Y W W D S
 IDENTIFICATION OF SHIFT (D OR N)
 DAY OF WEEK
 WEEK OF YEAR
 THE LAST 2 DIGITS OF YEAR

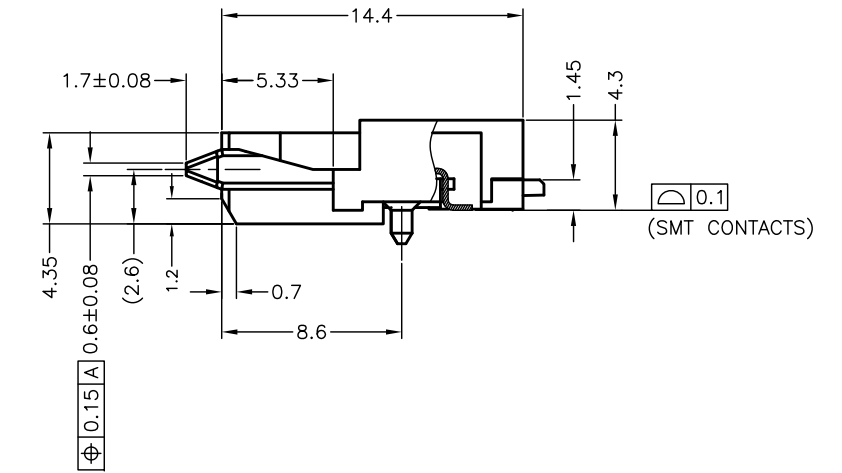
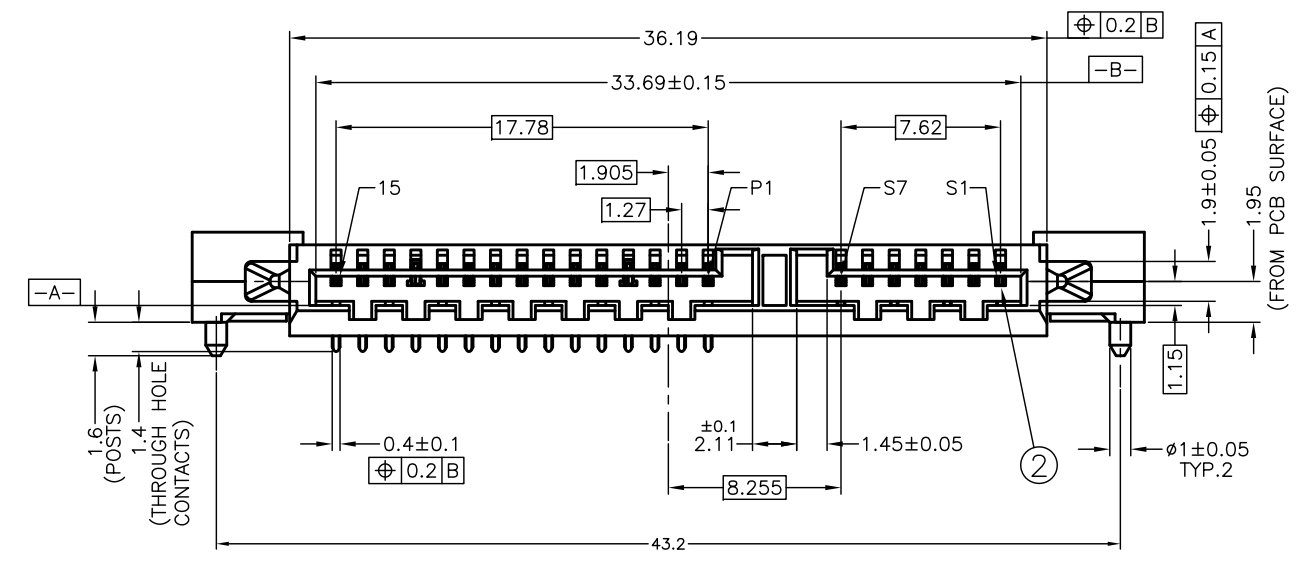
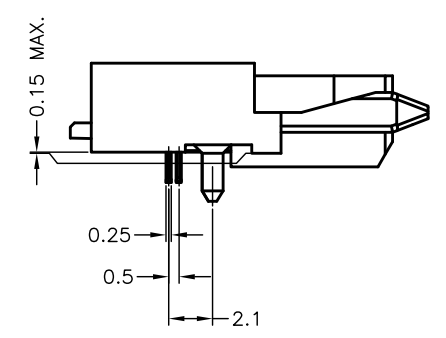


VIEW WITH CAP



REMOVE CAP AFTER REFLOW PROCESS

SCREW M2, 2 PCS. FROM BOTTOM SIDE OF P.C.B.

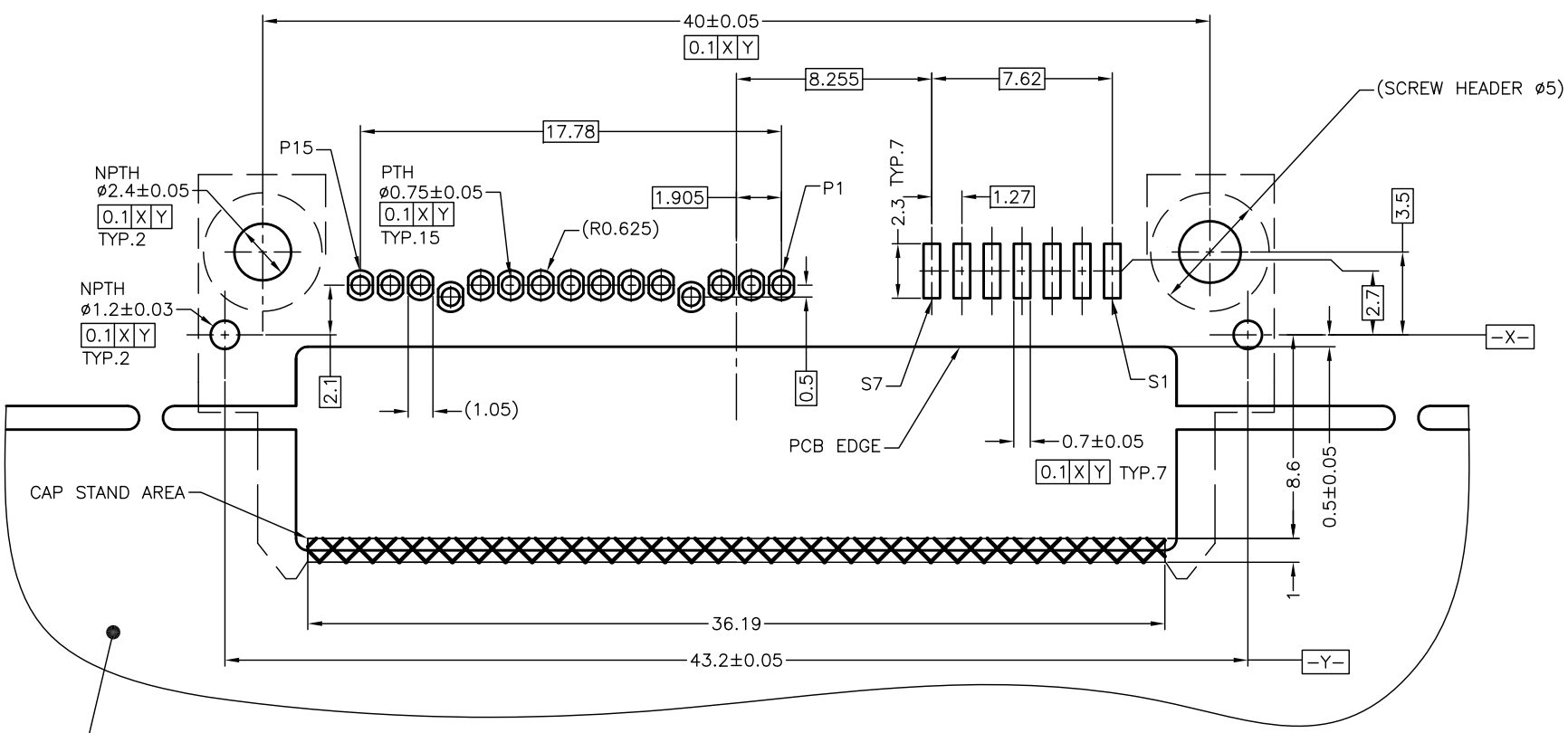


VIEW WITHOUT CAP

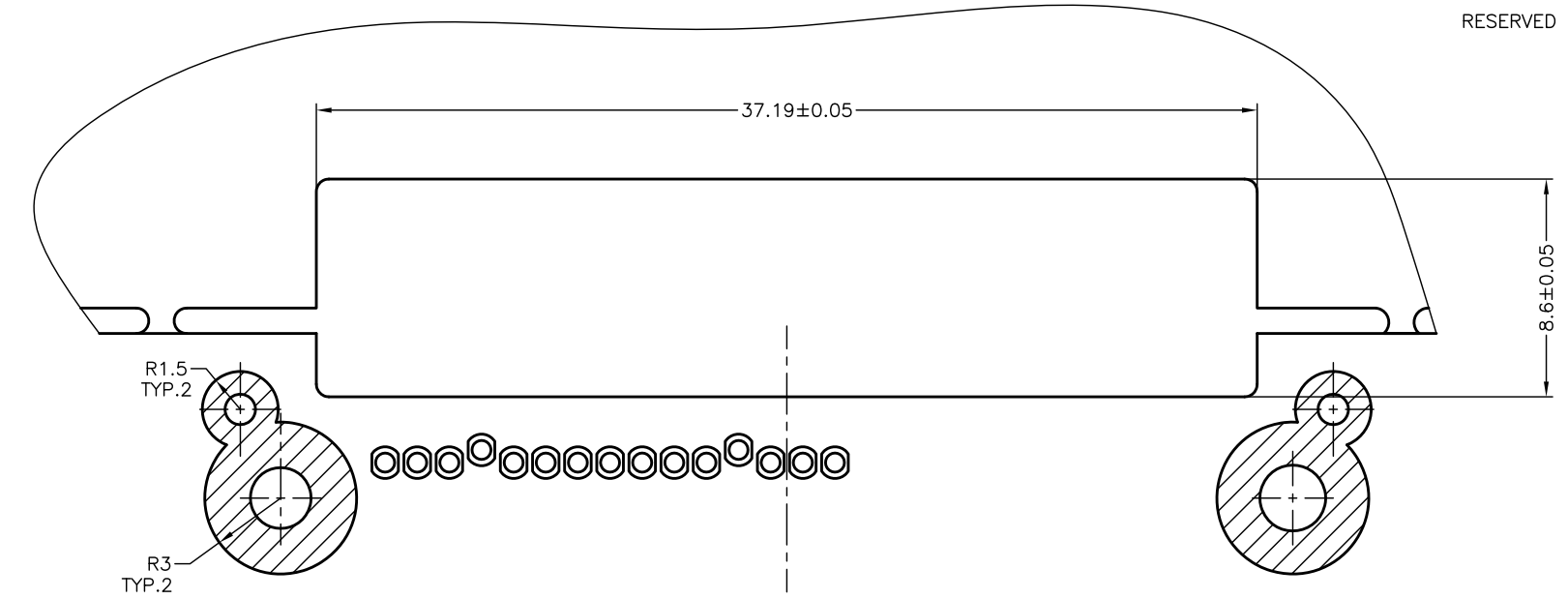
2129475-1
 PART NUMBER

| | | | | | | |
|--|--|-----------------------------------|---------------------|--|----------|--|
| THIS DRAWING IS A CONTROLLED DOCUMENT. | | DWN V.PENG 20CT2013 | TE Connectivity | 2129475-1 | | |
| DIMENSIONS: mm | | CHK V.PENG 20CT2013 | | SLANT INSERTION, REVERSED TYPE SATA CONNECTOR | | |
| TOLERANCES UNLESS OTHERWISE SPECIFIED: | | APVD D.HALBERSTADT 20CT2013 | | NAME | | |
| 0 PLC ± 0.25 1 PLC ± 0.25 2 PLC ± 0.25 3 PLC ± 0.25 4 PLC ± - ANGLES ± 3° | | PRODUCT SPEC | | SIZE CAGE CODE DRAWING NO | | |
| MATERIAL SEE NOTE | | FINISH SEE NOTE | APPLICATION SPEC | RESTRICTED TO | | |
| | | WEIGHT 2.5 GRAM | A2 00779 C-2129475 | | | |
| | | CUSTOMER DRAWING | SCALE 4:1 | SHEET 1 of 3 | REV A | |

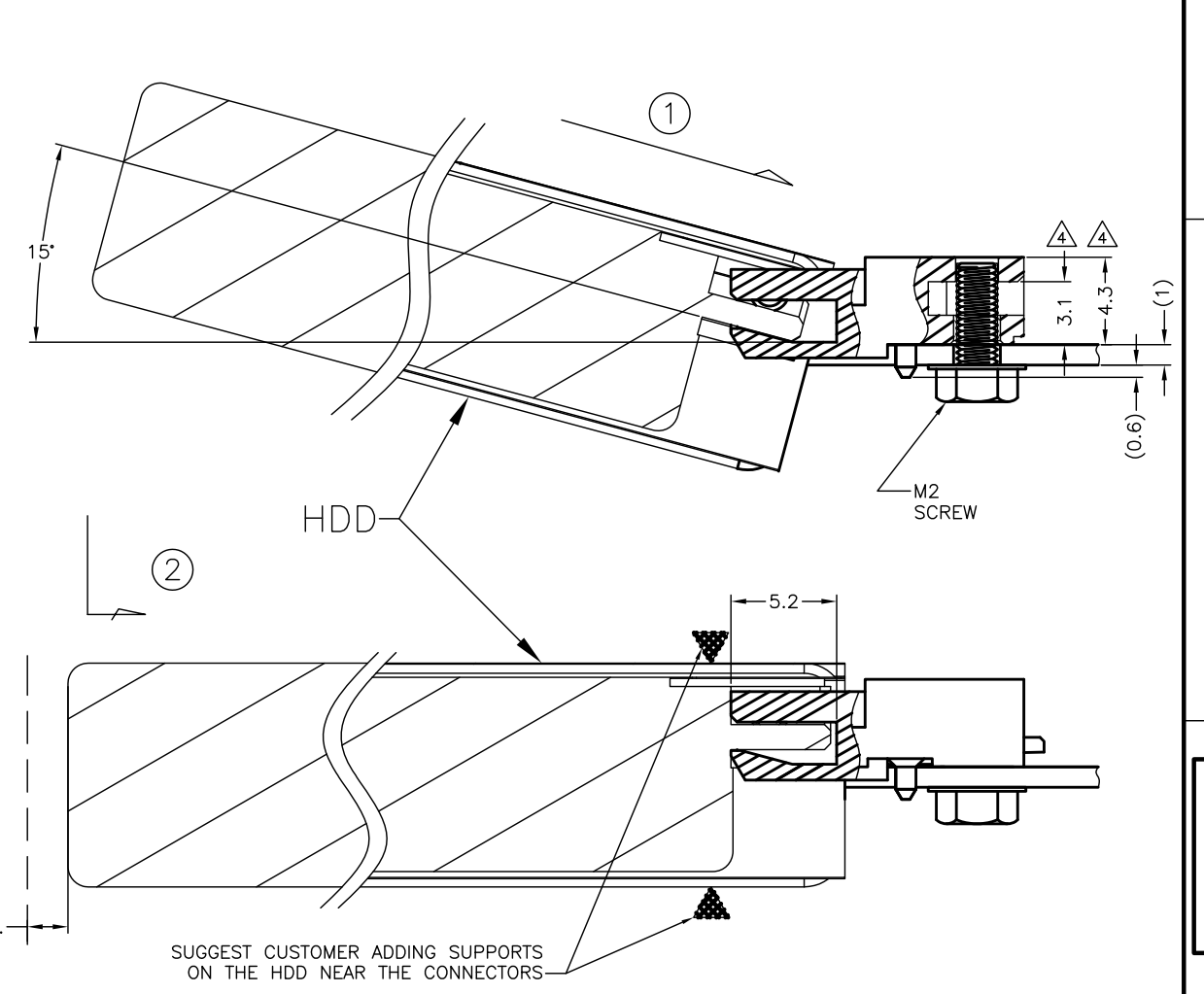
| LOC | | DIST | | REVISIONS | | | |
|-----|-----|-------------|------|-----------|------|--|--|
| P | LTR | DESCRIPTION | DATE | DWN | APVD | | |
| - | - | SEE SHEET 1 | - | - | - | | |



RECOMMENDED P.C.B LAYOUT (MOUNTING SIDE)



RECOMMENDED P.C.B LAYOUT (BOTTOM SIDE)

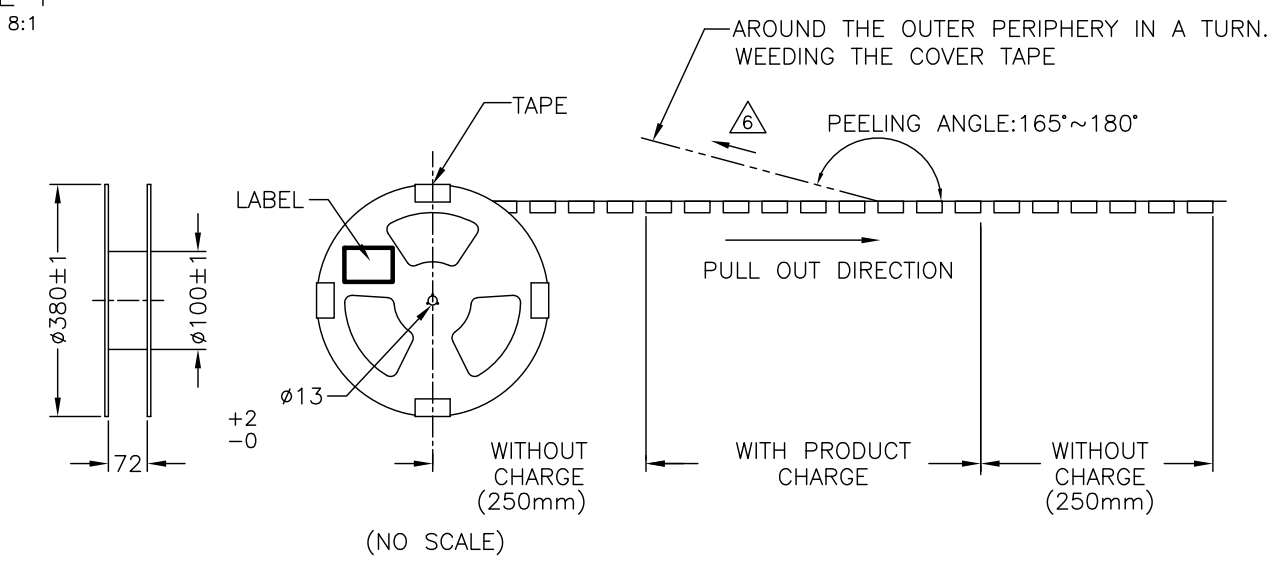
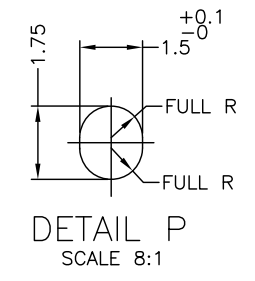
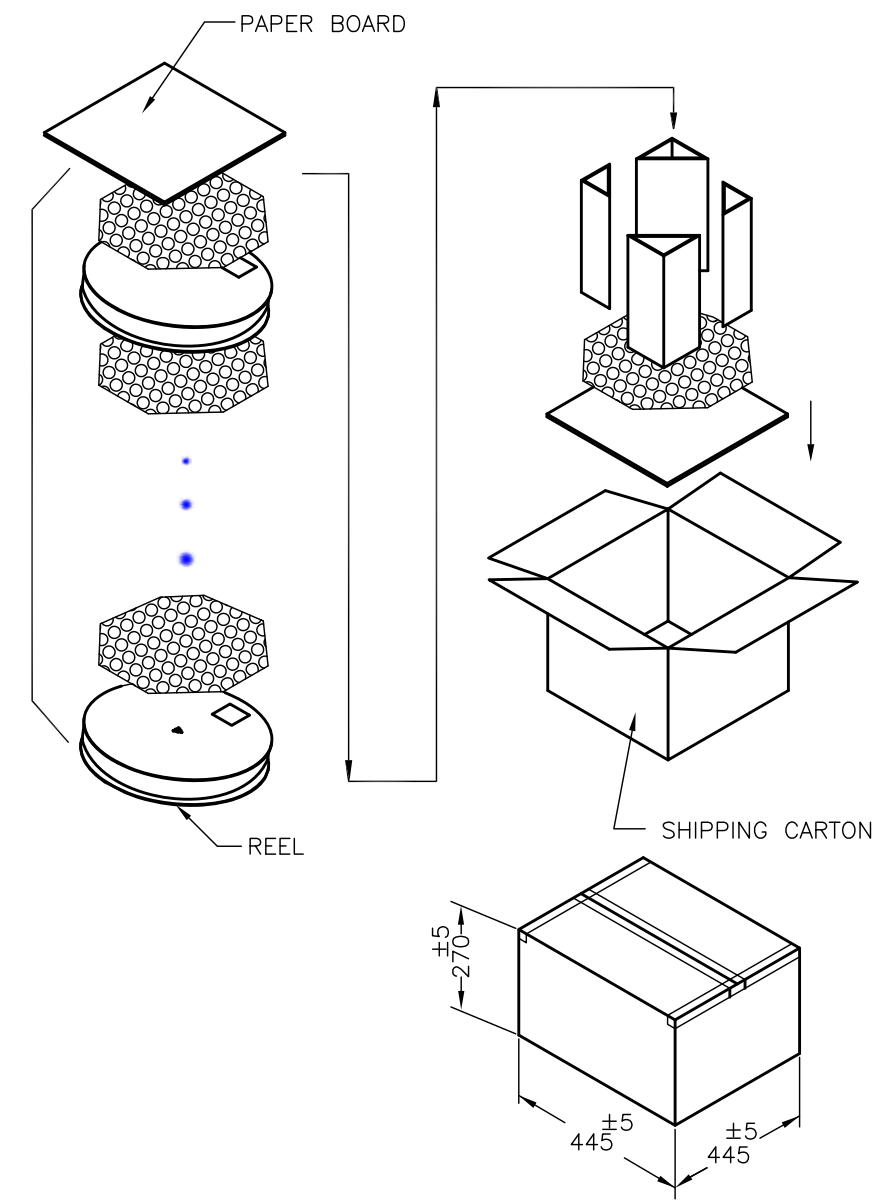
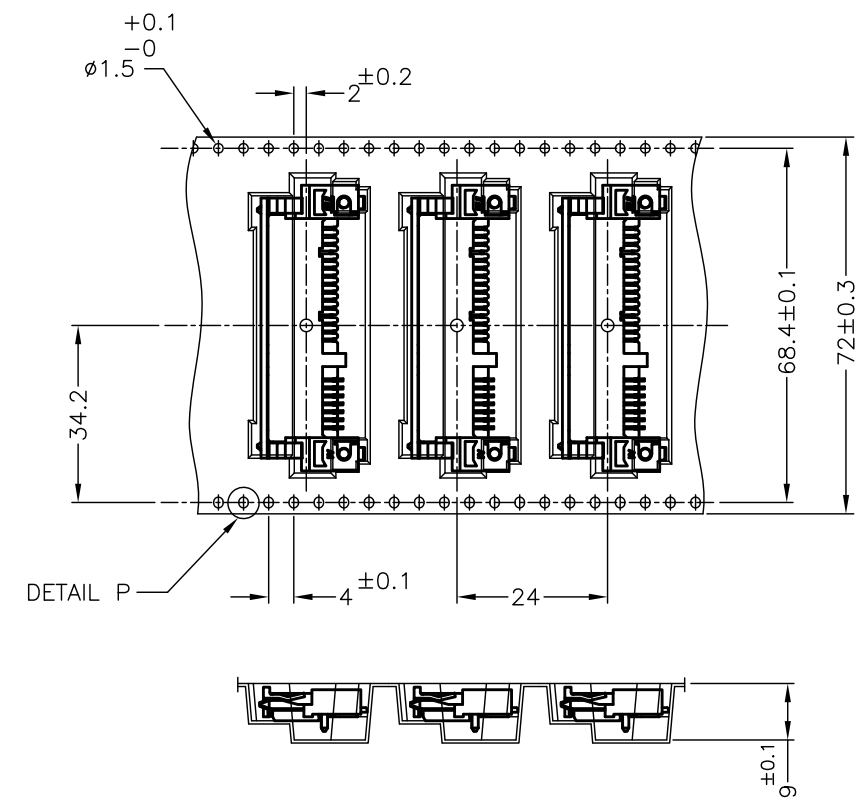


INSERTION OPERATION

| | | | | |
|--|--|------------------|---|-----------|
| THIS DRAWING IS A CONTROLLED DOCUMENT. | | DWN | STE TE Connectivity | |
| DIMENSIONS: mm | | CHK | | |
| TOLERANCES UNLESS OTHERWISE SPECIFIED: | | APVD | NAME | |
| 0 PLC ± 0.1 | | PRODUCT SPEC | SLANT INSERTION, REVERSED TYPE SATA CONNECTOR | |
| 1 PLC ± 0.1 | | APPLICATION SPEC | SIZE | CAGE CODE |
| 2 PLC ± 0.1 | | WEIGHT | A2 | 00779 |
| 3 PLC ± 0.1 | | CUSTOMER DRAWING | DRAWING NO | 2129475 |
| 4 PLC $\pm -$ | | SCALE | 4:1 | SHEET |
| ANGLES $\pm 3^\circ$ | | RESTRICTED TO | | 2 of 3 |
| MATERIAL | | REV | | A |
| FINISH | | | | |

THIS DRAWING IS UNPUBLISHED.
 RELEASED FOR PUBLICATION
 © COPYRIGHT By - ALL RIGHTS RESERVED.

| | | | | |
|-----|------|-----------|------|-------------|
| LOC | DIST | REVISIONS | | |
| DW | | P | LTR | DESCRIPTION |
| | | - | - | SEE SHEET 1 |
| | | | DATE | DWN |
| | | | | APVD |



6. PEELING STRENGTH OF COVER TAPE: 0.2N ~1.2N
 7. PACKING MATERIAL: CARRY TAPE:HIPS;COLOR:CLEAR
 COVER TAPE:PET;COLOR:CLEAR

8. QUANTITY:

| | PCS/REEL | REEL/BOX | PCS/BOX |
|-----------|----------|----------|---------|
| 2129475-1 | 400 | 3 | 1200 |

THIS DRAWING IS A CONTROLLED DOCUMENT.

| | | | | | | |
|--------------------------------|-----|------|----------------|------------------|--------------|------------------|
| DWN | CHK | APVD | PRODUCT SPEC | APPLICATION SPEC | WEIGHT | CUSTOMER DRAWING |
| TE Connectivity | | | NAME | | SIZE | CAGE CODE |
| SLANT INSERTION, REVERSED TYPE | | | SATA CONNECTOR | | DRAWING NO | RESTRICTED TO |
| A2 | | | 00779 | | C-2129475 | |
| SCALE | | | N/A | | SHEET 3 of 3 | |
| REV | | | A | | | |