

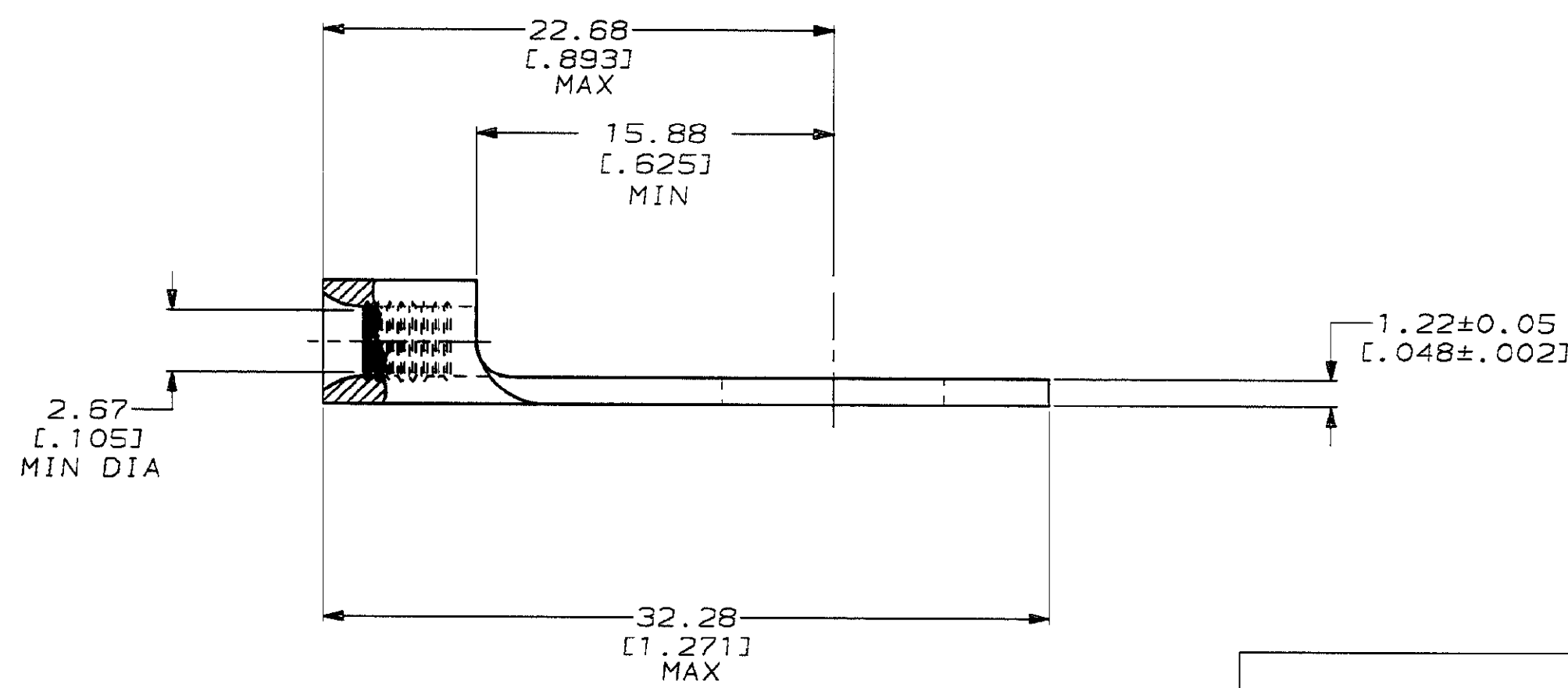
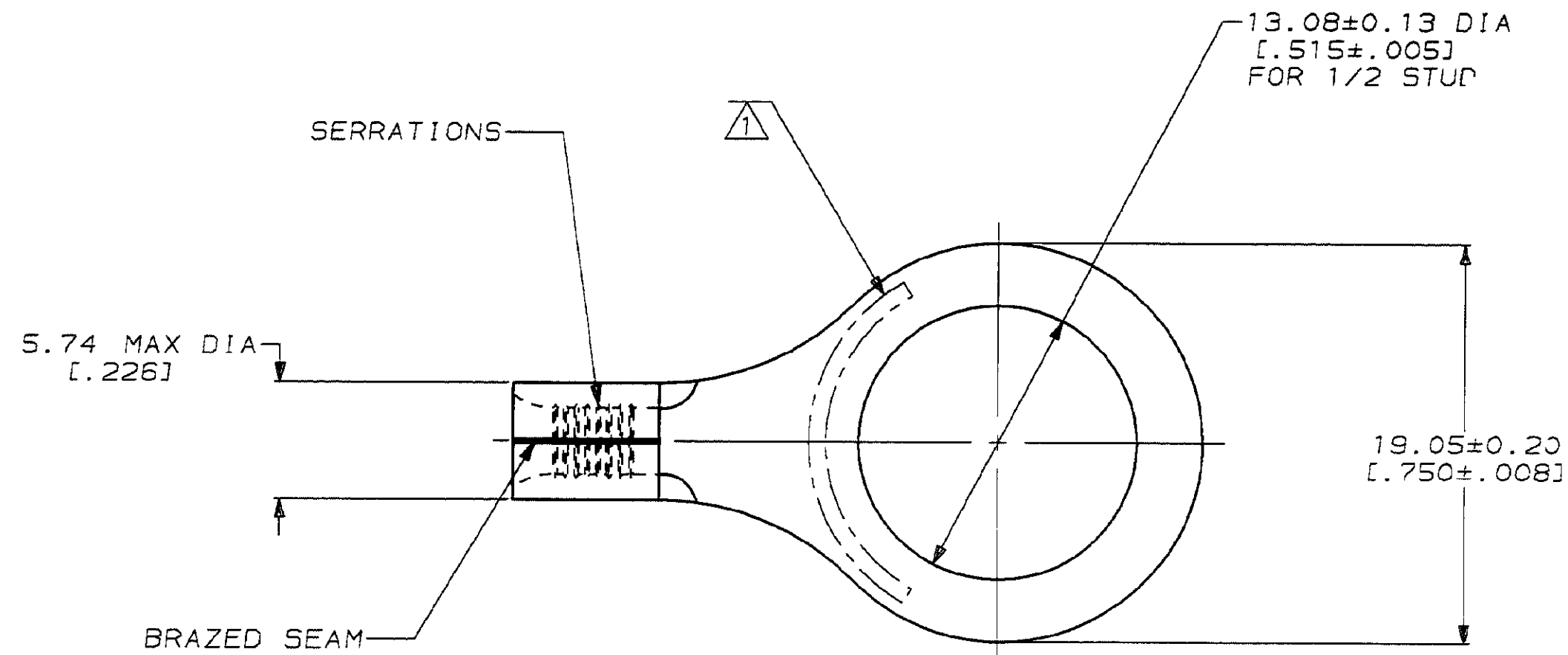
DRAWING MADE IN THIRD ANGLE PROJECTION  
 THIS DRAWING IS UNPUBLISHED. RELEASED FOR PUBLICATION .19  
 © COPYRIGHT 19 BY AMP INCORPORATED. ALL INTERNATIONAL RIGHTS RESERVED.

| LOC | DIST | P | F | ZONE | LTR | DESCRIPTION                           | DATE    | APPD                |
|-----|------|---|---|------|-----|---------------------------------------|---------|---------------------|
| G   | 14   |   |   |      |     | C REV,RDRW, & SM PKG PER 0720-0040-93 | 3-17-93 | 1 <sup>st</sup> DAP |



|                                  |                           |
|----------------------------------|---------------------------|
| <b>AMP</b><br>WIRE RANGE         | E13288<br>Listed          |
| 16-14HD AWG<br>SOLID OR STRANDED | 16-14HD AWG<br>STRANDED   |
| LR7189<br>Certified              | MILITARY P/N<br>AND CLASS |
| 16-14HD AWG<br>SOLID OR STRANDED | NOT APPLICABLE            |

△ STAMP AMP 16-14HD\* APPROX AS SHOWN



|          |                  |            |
|----------|------------------|------------|
| 100      | LOOSE PIECE, BOX | 8-321165-1 |
| ---      | LOOSE PIECE      | 321165     |
| QUANTITY | PACKAGE TYPE     | PART NO    |

|  |  |   |  |   |   |
|--|--|---|--|---|---|
| <b>AMP INCORPORATED</b><br>CUSTOMER SERVICE SYSTEMS                              |  | MAX RECOMMENDED OPERATING TEMPERATURE:<br>170°C MAX   | DO NOT SCALE PRINT.<br>UNLESS SPECIFIED<br>DIMENSIONS IN mm [INCHES]<br>TOLERANCES ON:<br>2 PLC DEC ± -<br>3 PLC DEC ± -<br>ANGLES ± - | DR 3-17-93<br>TA BRINKMAN<br>CHK 3-17-93<br>DA PATTERSON<br>APPD 3-17-93<br>DE MILLER<br>APPD 3-17-93<br>JL HECKLEY | <b>AMP</b> AMP Incorporated<br>Harrisburg, PA 17105-3608  |
| FOR ADDITIONAL PRODUCT INFORMATION OR COPIES OF DRAWINGS AND TECHNICAL DOCUMENTS | PRODUCT INFORMATION CENTER<br>1-800-522-6752 | VOLTAGE RATING:<br>NOT APPLICABLE   | MATERIAL<br>COPPER PER ASTM B-152 ANNEALED   | PRODUCT SPEC<br>-   | NAME<br>TERMINAL, RING TONGUE, HEAVY DUTY, SOLISTRAND™    |
| FOR APPLICATION TOOLING INFORMATION  | TOOLING ASSISTANCE CENTER<br>1-800-722-1111  | WIRE CROSS SECTIONAL AREA RANGE:<br>1.04-2.62mm <sup>2</sup> [2,050-5,180] CIR MILS<br>SOLID OR STRANDED  | FINISH<br>TIN PLATE<br>0.00254[.000100] MIN THK PER MIL-T-10727  | APPLICATION SPEC<br>-   | SIZE<br>C<br>CAGE CODE<br>00779<br>DRAWING NO<br>C=321165 |
| FOR ORDER ENTRY  | 1-800-526-5142                               | THIS DRAWING IS A CONTROLLED DOCUMENT FOR AMP INCORPORATED. IT IS SUBJECT TO CHANGE AND THE CONTROLLING ENGINEERING ORGANIZATION SHOULD BE CONTACTED FOR THE LATEST REVISION. |  | WEIGHT<br>-   | SCALE<br>4:1<br>SHEET<br>1 OF 1                           |