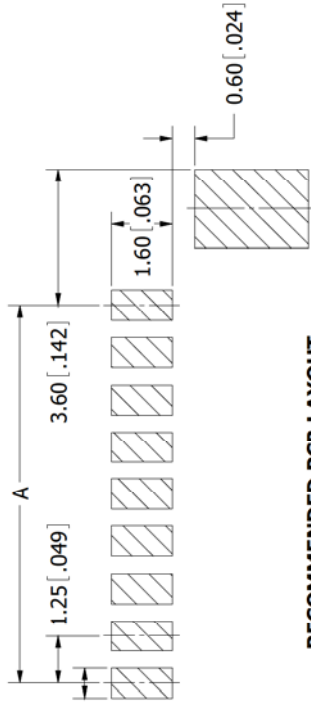
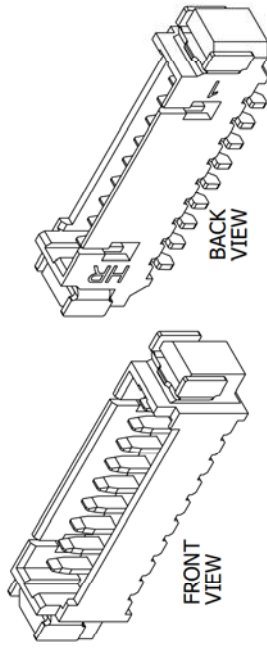


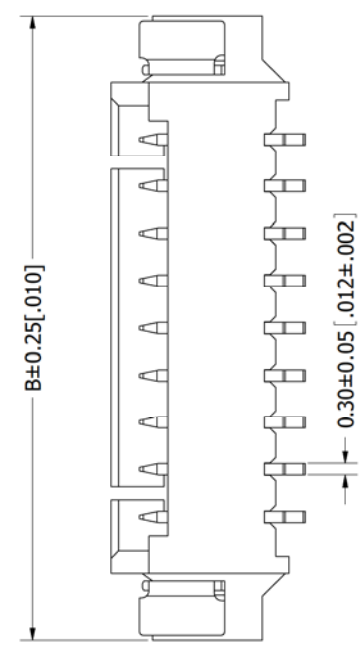
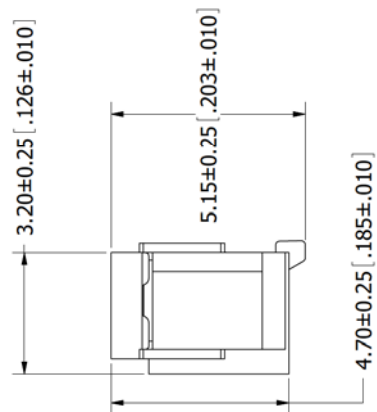
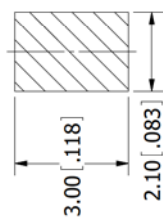
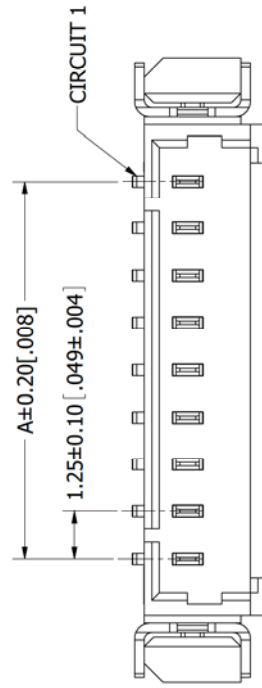
# PART NUMBER CODING SWR120-NPEG-S--HM-BG

**NUMBER OF POSITIONS**  
(CONTACTS PER ROW)

REV.	ECO. NO	DESCRIPTION	DATE	BY
A	2002	INITIAL RELEASE	7/17/2009	JH



**RECOMMENDED PCB LAYOUT  
TOLERANCE: ±0.10[.004]**



Part Number	Positions/ Contacts		A		B	
	MM	INCH	MM	INCH	MM	INCH
SWR120-NPEG-S02-HM-BG	1.25	0.049	7.75	0.305		
SWR120-NPEG-S03-HM-BG	2.50	0.098	9.00	0.354		
SWR120-NPEG-S04-HM-BG	3.75	0.148	10.25	0.404		
SWR120-NPEG-S05-HM-BG	5.00	0.197	11.50	0.453		
SWR120-NPEG-S06-HM-BG	6.25	0.246	12.75	0.502		
SWR120-NPEG-S07-HM-BG	7.50	0.295	14.00	0.551		
SWR120-NPEG-S08-HM-BG	8.75	0.344	15.25	0.600		
SWR120-NPEG-S09-HM-BG	10.00	0.394	16.50	0.650		
SWR120-NPEG-S10-HM-BG	11.25	0.443	17.75	0.699		
SWR120-NPEG-S11-HM-BG	12.50	0.492	19.00	0.748		
SWR120-NPEG-S12-HM-BG	13.75	0.541	20.25	0.797		
SWR120-NPEG-S13-HM-BG	15.00	0.591	21.50	0.846		
SWR120-NPEG-S14-HM-BG	16.25	0.640	22.75	0.896		
SWR120-NPEG-S15-HM-BG	17.50	0.689	24.00	0.945		

- NOTES:**
- INSULATOR MATERIAL: NYLON6T, UL94V-0, COLOR:BEIGE.
  - CONTACT MATERIAL: PHOSPHOR BRONZE.
  - CONTACT PLATING: TIN OVERALL.
  - CURRENT RATING: 1 AMP.
  - VOLTAGE RATING: 125V AC/DC.
  - INSULATOR RESISTANCE: 100 MEGOHMS MIN.
  - CONTACT RESISTANCE: 20 MILLIOHMS MAX.
  - DIELECTRIC WITHSTANDING VOLTAGE: 500V AC.
  - OPERATING TEMPERATURE: -25° C TO +85° C.
  - MATES WITH SWH120 SERIES SINGLE ROW HOUSING.



**RoHS COMPLIANT**

UNLESS OTHERWISE SPECIFIED:  
DIMENSIONS ARE IN MM(INCHES)  
TOLERANCES:  
X = .3 (0.1) ± .5  
XX = .15 (.009)  
XXX = .050 (.002)  
XXXX = .025 (.001)  
REMOVE ALL BURRS AND SHARP EDGES .010 MAX  
INTERPRET DIMENSIONS AND GEOMETRIC  
TOLERANCING  
PER: ANSI Y14.5M-1994

**SULLINS**  
CONNECTOR SOLUTIONS

DATE: 7/02/2009 NAME: JH

DESCRIPTION: THE INFORMATION HEREIN CONTAINS SULLINS ELECTRONICS AND IS NOT TO BE REPRODUCED, USED OR TRANSMITTED IN ANY MANNER WITHOUT THE EXPRESS WRITTEN PERMISSION OF SULLINS ELECTRONICS.

PART NUMBER: SWR120-NPEG-S--HM-BG

SIZE: DWG. NO. 11295

SCALE: 10:1

SHEET 1 OF 1