

PLEASE CHECK WWW.MOLEX.COM FOR LATEST PART INFORMATION

Part Number: **5054761010**
Status: **Active**
Overview: SlimStack™ 0.40mm Pitch Board-to-Board Connectors
Description: SlimStack™ Hybrid Power SMT Board-to-Board Plug, 0.40mm Pitch, 0.60mm Height, 4 Power, 6 Signal Contacts, 10 Amp Type

Documents:

3D Model	Application Specification 5054730000-A00 (PDF)
Drawing (PDF)	Packaging Specification 5054769200-200 (PDF)
Product Specification 5054730000-000 (PDF)	RoHS Certificate of Compliance (PDF)

General

Product Family	PCB Headers
Series	505476
Application	Board-to-Board
Comments	* 10A of current per circuit is applicable if the circuit was constructed by two power pins via a PWB/FPC circuit
Overview	SlimStack™ 0.40mm Pitch Board-to-Board Connectors
Product Name	SlimStack™
UPC	889056269025

Physical

(p)ower-(s)ignal Configuration	4p - 6s
Breakaway	No
Circuits (Loaded)	10
Circuits (maximum)	10
Color - Resin	Black
Durability (mating cycles max)	10
Glow-Wire Compliant	No
Lock to Mating Part	Yes
Mated Height	0.60mm
Material - Metal	Copper Alloy
Material - Plating Mating	Gold over Nickel
Material - Plating Termination	Gold over Nickel
Material - Resin	Liquid Crystal Polymer
Net Weight	6.158/mg
Number of Rows	2
Orientation	Vertical
PCB Locator	No
PCB Retention	Yes
Packaging Type	Embossed Tape on Reel
Pitch - Mating Interface	0.40mm
Polarized to Mating Part	No
Polarized to PCB	No
Stackable	No
Temperature Range - Operating	-40°C to +85°C
Termination Interface: Style	Surface Mount

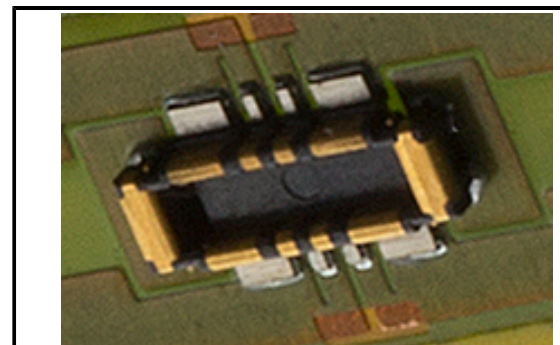
Electrical

Current - Maximum per Contact	0.5A, 5.0A*
Voltage - Maximum	50V AC (RMS)/DC

Material Info

Reference - Drawing Numbers

Application Specification	5054730000-A00
Packaging Specification	5054769200-200
Product Specification	5054730000-000



Series image - Reference only

EU ELV

Not Relevant

EU RoHS

Compliant

China RoHS

REACH SVHC

Not Contained Per
-ED/01/2017 (12
January 2017)

Halogen-Free

Status

Low-Halogen

Need more information on product environmental compliance?

Email productcompliance@molex.com
Please visit the [Contact Us](#) section for any non-product compliance questions.

China ROHS	Green Image
ELV	Not Relevant
RoHS Phthalates	Not Contained

Search Parts in this Series

[505476](#) Series

Mates With

[505473](#) 0.40mm Pitch SlimStack™ Board-to-Board Battery Receptacle

This document was generated on 03/15/2017

PLEASE CHECK WWW.MOLEX.COM FOR LATEST PART INFORMATION