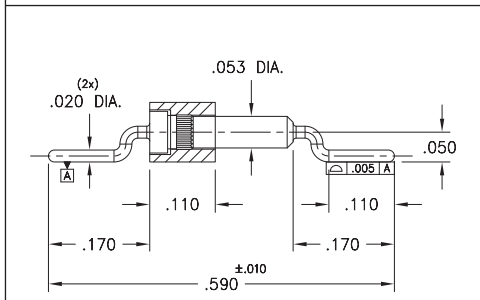
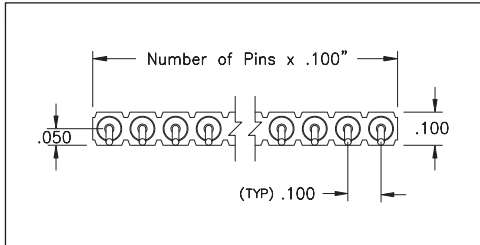


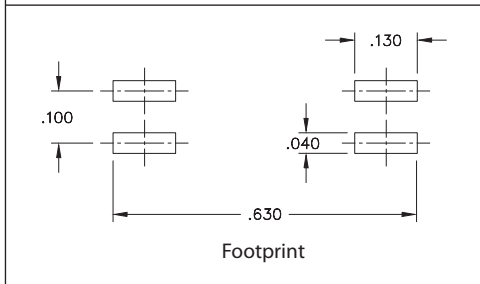
INTERCONNECTS

SERIES 339 • .100" GRID HORIZONTAL SURFACE MOUNT JUMPER • SINGLE ROW STRIPS

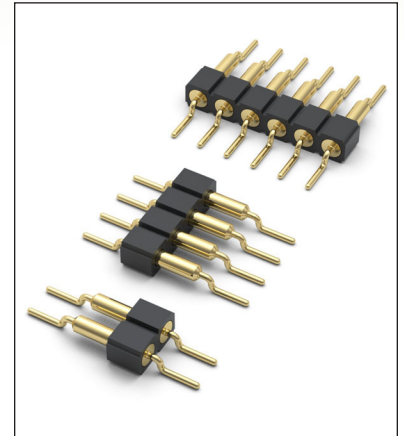


Coplanarity .005". For pin counts >10 positions, consult Technical Support.






FIG. 1



- Series 339 single row Horizontal surface mount jumpers on .100" grid centers
- Series 339 use MM #3900 pins. See page 214 for details
- Insulators are high temperature thermoplastic, suitable for all soldering operations
- Ideal for daisy chaining parallel boards



ORDERING INFORMATION

| FIG. 1 | Series 339...000 | Single Row Surface Mount Jumper |
|--|--|--|
| | | 339-XX-1 |
| | Specify number of pins | 02-10 |
|    | | |
| SPECIFY PLATING CODE XX= | | |
| Pin Plating | 10  | 40  |
| | 10 μ " Au | 200 μ " Sn |