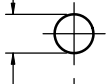
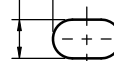


Ø.125 [3.2] / Ø.128 [3.3]

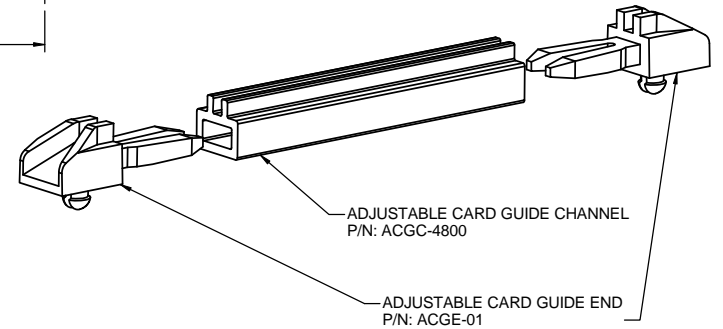
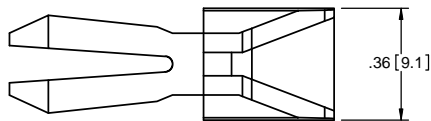


SECTION A-A  
SCALE 2.5 : 1

.125 [3.2] / .128 [3.3] .22 [5.5]

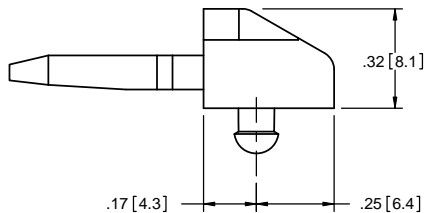


48.34 ± .50  
[1227.8 ± 12.7]  
MOUNTING HOLES

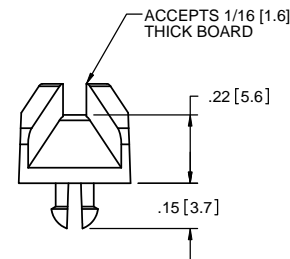


ADJUSTABLE CARD GUIDE CHANNEL  
P/N: ACGC-4800

ADJUSTABLE CARD GUIDE END  
P/N: ACGE-01

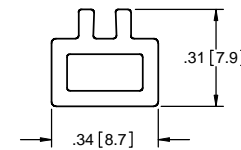


.17 [4.3] .25 [6.4]



P/N: ACGE-01

1. MATERIAL: NYLON 6/6 (RMS-01)  
2. COLOR: NATURAL



P/N: ACGC-4800

1. MATERIAL: PVC (RMS-04)  
2. COLOR: NATURAL

NOTES:  
1. PART NO. ACGC-4800 CAN BE CUT TO ANY LENGTH BY SPECIAL ORDER.  
EXAMPLE: IF MOUNTING HOLES DISTANCE IS 5.00 [127.0], SUBTRACT .34 [8.6] FROM IT.  
THEN YOUR CHANNEL LENGTH IS 4.66 [118.4].

TITLE: <b>ADJUSTABLE CARD GUIDE</b>					
FILE #: ACGC-ACGE	DWN: P.B.	APP: -	FINAL		
SHEET: 1 OF 1	SHEET SIZE: B	DT: 01/16/95	CHKD: -	PART #	
RE: <b>RICHCO, INC.</b>		<b>RICHCO, INC.</b> ENG@RICHCO-INC.COM (773) 539-4060		SEE DRAWING	
CREATED USING SOLIDWORKS		TOLERANCES UNLESS NOTED .XX=±.010 .XXX=±.005 FRAC.=±1/64 ANG.=±1°		PRINT TYPE <b>CA</b>	

REV.	DESCRIPTION	ENGR.	DATE
E	SEE CO 200462 FOR CHANGES	SK	10/23/05
D	SEE ECN #1018 FOR CHANGES	SK	06/14/05
C	SEE ECN #800 FOR CHANGES	SM	06/14/04
B	P/N WAS ACGC-04 AND FILE # WAS 03060	SM	11.15.00
A	CONVERTED TO ACAD	PB	01.16.95