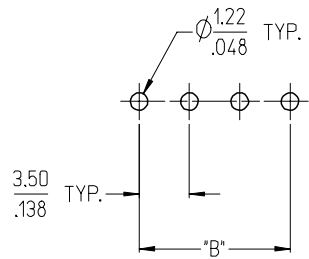
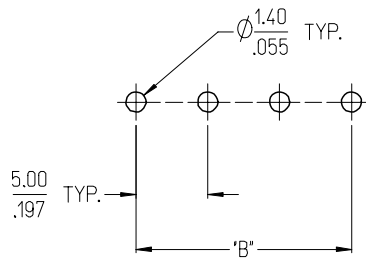


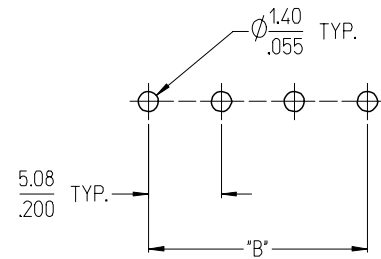
3950X SERIES
3.50mm HEADERS



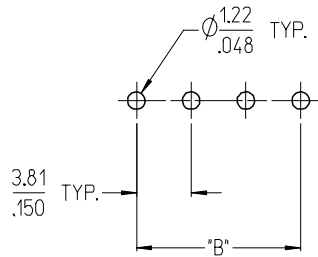
3952X & 3954X SERIES
5.00mm HEADERS
5.00mm 10 AMP FIXED



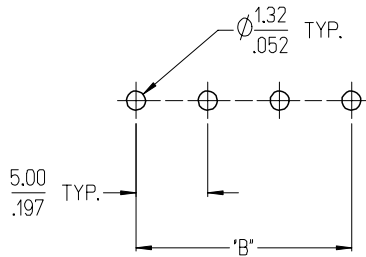
3953X SERIES
5.08mm HEADERS



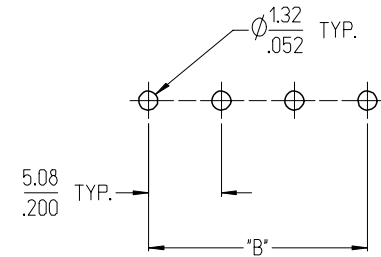
3951X SERIES
3.81mm HEADERS



3954X SERIES
5.00mm 15 AMP FIXED



3954X SERIES
5.08mm 15 AMP FIXED



NOTES:

- REFER TO INDIVIDUAL PRODUCT SALES DRAWINGS FOR "B" DIMENSION.
- DOES NOT APPLY TO DUAL LEVEL HEADERS, SERIES 39528 AND 39538.
- TYP. = TYPICAL.

INITIAL RELEASE
EC NO: ETC2007-0096
DRW: CLYORK 2006/10/02
CHKD: JMACNEIL 2006/10/04
APPR: JMACNEIL 2006/10/04

| REV | DESCRIPTION |
|-----|-------------|
| A | |

| QUALITY SYMBOLS | |
|-----------------|------|
| | =0 |
| | =0.1 |

| GENERAL TOLERANCES (UNLESS SPECIFIED) | | |
|---------------------------------------|--------|---------|
| | mm | INCH |
| 4 PLACES | ± .005 | ± .0005 |
| 3 PLACES | ± .010 | ± .0010 |
| 2 PLACES | ± 0.13 | ± .01 |
| 1 PLACE | ± 0.3 | ± .0125 |
| ANGULAR ± 2 ° | | |

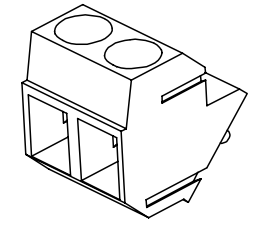
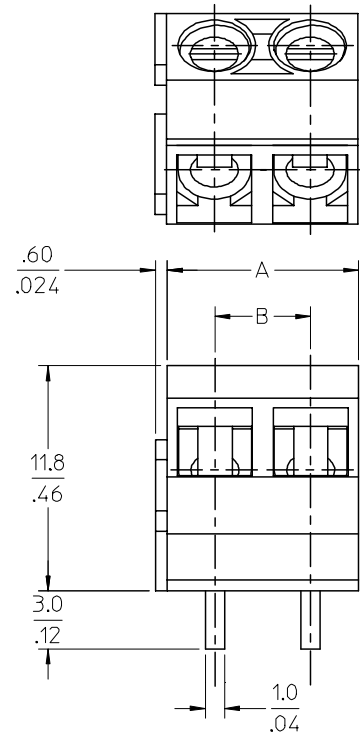
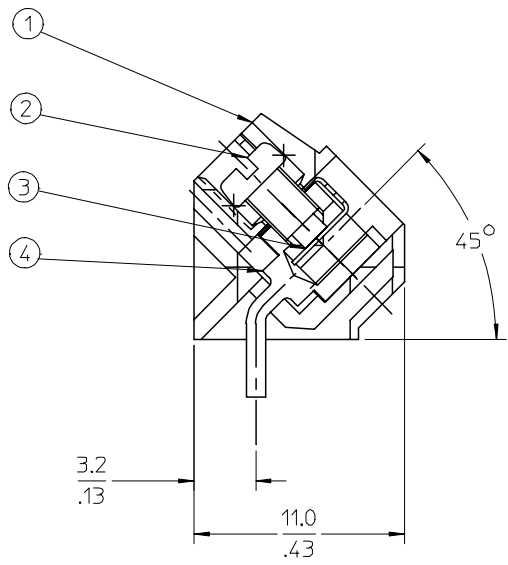
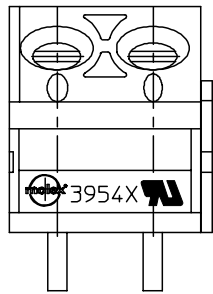
| DIMENSION STYLE | | SCALE | DESIGN UNITS | THIRD ANGLE PROJECTION |
|-----------------|--|------------------------------------------------|--------------|------------------------|
| MM/IN | | 3:1 | INCH | |
| DRAWN BY | | TITLE | | |
| C. YORK | | RECOMMENDED PCB LAYOUT FOR ESE TERMINAL BLOCKS | | |
| DATE | | DATE | | |
| 2006/08/25 | | 2006/08/25 | | |
| CHECKED BY | | DATE | | |
| J. MACNEIL | | 2006/08/25 | | |
| APPROVED BY | | DATE | | |
| J. MACNEIL | | 2006/08/25 | | |
| MATERIAL NO. | | DOCUMENT NO. | | |
| --- | | SD-39501-002 | | |
| SIZE | | SHEET NO. | | |
| B | | 1 OF 1 | | |

THIS DRAWING CONTAINS INFORMATION THAT IS PROPRIETARY TO MOLEX INCORPORATED AND SHOULD NOT BE USED WITHOUT WRITTEN PERMISSION

10 9 8 7 6 5 4 3 2 1

F
E
D
C
B
A

F
E
D
C
B
A



SPECIFICATIONS:

1. Material:
 - (1). Body: PA66
 - (2). Screw: Steel
 - (3). Wire Protector: QSn
 - (4). Terminal: Brass
2. Wire range: 24 - 14AWG.
3. Electrical rating: 300V, 10A.
4. MAX TORQUE: 3 in-lbs.
5. Wire strip length: 5.00mm.
6. Insulation resistance: DC500V, 500M.
7. Operating temperature: -40C to +105C.
8. A = N x P.
9. B = (N - 1) x P
10. P = (Pitch) = 5.00MM (.197").
11. N = Number of positions available 2 through 24.

RELEASE
EC NO: NEC2006-0310
DRWNL: LROTHAUS 2006/01/09
CHKD: CYORK 2006/01/09
APPR: JPAMLIK 2006/01/10

| REV | DESCRIPTION |
|-----|-------------|
| A | |

| QUALITY SYMBOLS | |
|------------------------------------------------------|---------|
| | = 0 |
| | = 0 |
| GENERAL TOLERANCES (UNLESS SPECIFIED) | |
| | mm |
| 4 PLACES | ± .0015 |
| 3 PLACES | ± .0038 |
| 2 PLACES | ± .01 |
| 1 PLACE | ± .03 |
| ANGULAR ± 2 ° | |
| DRAFT WHERE APPLICABLE MUST REMAIN WITHIN DIMENSIONS | |

| DIMENSION STYLE | |
|-----------------|----------|
| MM/IN | |
| DRAWN BY | DATE |
| LROTHAUS | 10/7/05 |
| CHECKED BY | DATE |
| C. YORK | 01/06/06 |
| APPROVED BY | DATE |
| MATERIAL NO. | |
| See Chart | |

| | | |
|-------------------------------------------------------------------------------------------------------------------------------|--------------|------------------------|
| SCALE | DESIGN UNITS | THIRD ANGLE PROJECTION |
| 4:1 | INCH | |
| TITLE | | |
| 5.0MM, EURO TERM. BLOCK PC MOUNT, 45 DEGREE | | |
| APPROVED BY | | |
| MOLEX INCORPORATED | | |
| MATERIAL NO. | DOCUMENT NO. | SHEET NO. |
| See Chart | SD-39543-001 | 1 OF 1 |
| THIS DRAWING CONTAINS INFORMATION THAT IS PROPRIETARY TO MOLEX INCORPORATED AND SHOULD NOT BE USED WITHOUT WRITTEN PERMISSION | | |

9 8 7 6 5 4 3 2 1

10 9 8 7 6 5 4 3 2 1

| Description | Circuit size | Material Numbers Molded to Length | | | | | | | | | Material Numbers Stackable | | | | | | Dimensional Information | | |
|-------------------------------------|--------------|-----------------------------------|-----------|-----------|------------------|-----------|-----------|------------------|-----------|-----------|----------------------------|-----------|-----------|--------|-------|--------|-------------------------|------|--|
| | | Black | | | Green | | | Black | | | Green | | | Dim. A | | Dim B | | | |
| | | 100% Tin | | | 100% Tin | | | 100% Tin | | | 100% Tin | | | mm | inch | mm | inch | | |
| | | Printing Options | | | Printing Options | | | Printing Options | | | Printing Options | | | | | | | | |
| | | None | 10A | 11A | None | 10A | 11A | None | 10A | 11A | None | 10A | 11A | None | 10A | 11A | mm | inch | |
| 5.0mm, Euro Block, PC Mount, 45 Deg | 2 | 395430202 | 395431202 | 395432202 | 395930202 | 395931202 | 395932202 | 395430502 | 395431502 | 395432502 | 395930502 | 395931502 | 395932502 | 10.00 | 0.394 | 5.00 | 0.197 | | |
| 5.0mm, Euro Block, PC Mount, 45 Deg | 3 | 395430203 | 395431203 | 395432203 | 395930203 | 395931203 | 395932203 | 395430503 | 395431503 | 395432503 | 395930503 | 395931503 | 395932503 | 15.00 | 0.591 | 10.00 | 0.394 | | |
| 5.0mm, Euro Block, PC Mount, 45 Deg | 4 | 395430204 | 395431204 | 395432204 | 395930204 | 395931204 | 395932204 | N/A | N/A | N/A | N/A | N/A | N/A | 20.00 | 0.787 | 15.00 | 0.591 | | |
| 5.0mm, Euro Block, PC Mount, 45 Deg | 5 | 395430205 | 395431205 | 395432205 | 395930205 | 395931205 | 395932205 | N/A | N/A | N/A | N/A | N/A | N/A | 25.00 | 0.984 | 20.00 | 0.787 | | |
| 5.0mm, Euro Block, PC Mount, 45 Deg | 6 | 395430206 | 395431206 | 395432206 | 395930206 | 395931206 | 395932206 | N/A | N/A | N/A | N/A | N/A | N/A | 30.00 | 1.181 | 25.00 | 0.984 | | |
| 5.0mm, Euro Block, PC Mount, 45 Deg | 7 | 395430207 | 395431207 | 395432207 | 395930207 | 395931207 | 395932207 | N/A | N/A | N/A | N/A | N/A | N/A | 35.00 | 1.378 | 30.00 | 1.181 | | |
| 5.0mm, Euro Block, PC Mount, 45 Deg | 8 | 395430208 | 395431208 | 395432208 | 395930208 | 395931208 | 395932208 | N/A | N/A | N/A | N/A | N/A | N/A | 40.00 | 1.575 | 35.00 | 1.378 | | |
| 5.0mm, Euro Block, PC Mount, 45 Deg | 9 | 395430209 | 395431209 | 395432209 | 395930209 | 395931209 | 395932209 | N/A | N/A | N/A | N/A | N/A | N/A | 45.00 | 1.772 | 40.00 | 1.575 | | |
| 5.0mm, Euro Block, PC Mount, 45 Deg | 10 | 395430210 | 395431210 | 395432210 | 395930210 | 395931210 | 395932210 | N/A | N/A | N/A | N/A | N/A | N/A | 50.00 | 1.969 | 45.00 | 1.772 | | |
| 5.0mm, Euro Block, PC Mount, 45 Deg | 11 | 395430211 | 395431211 | 395432211 | 395930211 | 395931211 | 395932211 | N/A | N/A | N/A | N/A | N/A | N/A | 55.00 | 2.165 | 50.00 | 1.969 | | |
| 5.0mm, Euro Block, PC Mount, 45 Deg | 12 | 395430212 | 395431212 | 395432212 | 395930212 | 395931212 | 395932212 | N/A | N/A | N/A | N/A | N/A | N/A | 60.00 | 2.362 | 55.00 | 2.165 | | |
| 5.0mm, Euro Block, PC Mount, 45 Deg | 13 | 395430213 | 395431213 | 395432213 | 395930213 | 395931213 | 395932213 | N/A | N/A | N/A | N/A | N/A | N/A | 65.00 | 2.559 | 60.00 | 2.362 | | |
| 5.0mm, Euro Block, PC Mount, 45 Deg | 14 | 395430214 | 395431214 | 395432214 | 395930214 | 395931214 | 395932214 | N/A | N/A | N/A | N/A | N/A | N/A | 70.00 | 2.756 | 65.00 | 2.559 | | |
| 5.0mm, Euro Block, PC Mount, 45 Deg | 15 | 395430215 | 395431215 | 395432215 | 395930215 | 395931215 | 395932215 | N/A | N/A | N/A | N/A | N/A | N/A | 75.00 | 2.953 | 70.00 | 2.756 | | |
| 5.0mm, Euro Block, PC Mount, 45 Deg | 16 | 395430216 | 395431216 | 395432216 | 395930216 | 395931216 | 395932216 | N/A | N/A | N/A | N/A | N/A | N/A | 80.00 | 3.150 | 75.00 | 2.953 | | |
| 5.0mm, Euro Block, PC Mount, 45 Deg | 17 | 395430217 | 395431217 | 395432217 | 395930217 | 395931217 | 395932217 | N/A | N/A | N/A | N/A | N/A | N/A | 85.00 | 3.346 | 80.00 | 3.150 | | |
| 5.0mm, Euro Block, PC Mount, 45 Deg | 18 | 395430218 | 395431218 | 395432218 | 395930218 | 395931218 | 395932218 | N/A | N/A | N/A | N/A | N/A | N/A | 90.00 | 3.543 | 85.00 | 3.346 | | |
| 5.0mm, Euro Block, PC Mount, 45 Deg | 19 | 395430219 | 395431219 | 395432219 | 395930219 | 395931219 | 395932219 | N/A | N/A | N/A | N/A | N/A | N/A | 95.00 | 3.740 | 90.00 | 3.543 | | |
| 5.0mm, Euro Block, PC Mount, 45 Deg | 20 | 395430220 | 395431220 | 395432220 | 395930220 | 395931220 | 395932220 | N/A | N/A | N/A | N/A | N/A | N/A | 100.00 | 3.937 | 95.00 | 3.740 | | |
| 5.0mm, Euro Block, PC Mount, 45 Deg | 21 | 395430221 | 395431221 | 395432221 | 395930221 | 395931221 | 395932221 | N/A | N/A | N/A | N/A | N/A | N/A | 105.00 | 4.134 | 100.00 | 3.937 | | |
| 5.0mm, Euro Block, PC Mount, 45 Deg | 22 | 395430222 | 395431222 | 395432222 | 395930222 | 395931222 | 395932222 | N/A | N/A | N/A | N/A | N/A | N/A | 110.00 | 4.331 | 105.00 | 4.134 | | |
| 5.0mm, Euro Block, PC Mount, 45 Deg | 23 | 395430223 | 395431223 | 395432223 | 395930223 | 395931223 | 395932223 | N/A | N/A | N/A | N/A | N/A | N/A | 115.00 | 4.528 | 110.00 | 4.331 | | |
| 5.0mm, Euro Block, PC Mount, 45 Deg | 24 | 395430224 | 395431224 | 395432224 | 395930224 | 395931224 | 395932224 | N/A | N/A | N/A | N/A | N/A | N/A | 120.00 | 4.724 | 115.00 | 4.528 | | |

| SEE SHEET 1 EC NO: NEC2006-03/10 DRWN: L.ROTHAUS 2006/01/09 CHKD: C.YORK 2006/01/09 APPR: J.P.MILLIK 2006/01/10 DESCRIPTION | QUALITY SYMBOLS = 0.05 = 0.1 | GENERAL TOLERANCES (UNLESS SPECIFIED) <table border="1"> <tr><th></th><th>mm</th><th>INCH</th></tr> <tr><td>4 PLACES</td><td>± ---</td><td>±.0015</td></tr> <tr><td>3 PLACES</td><td>± 0.038</td><td>±.005</td></tr> <tr><td>2 PLACES</td><td>± 0.13</td><td>±.01</td></tr> <tr><td>1 PLACE</td><td>± 0.3</td><td>± ---</td></tr> </table> | | mm | INCH | 4 PLACES | ± --- | ±.0015 | 3 PLACES | ± 0.038 | ±.005 | 2 PLACES | ± 0.13 | ±.01 | 1 PLACE | ± 0.3 | ± --- | DIMENSION STYLE MM/IN DRAWN BY: L.ROTHAUS CHECKED BY: C. YORK APPROVED BY: | SCALE 4:1 DESIGN UNITS INCH THIRD ANGLE PROJECTION | DATE 12/6/05 01/05/06 | TITLE 5.0MM, EURO TERM. BLOCK PC MOUNT, 45 DEGREE |
|---------------------------------------------------------------------------------------------------------------------------------------------------|----------------------------------------------------------------|------------------------------------------------------------------------------------------------------------------------------------------------------------------------------------------------------------------------------------------------------------------------------------------------------------------------------------------------------|---------------------|---------------------------------|---------------------|---------------------------------|-------|--------|----------|---------|-------|----------|--------|------|---------|-------|-------|-----------------------------------------------------------------------------------------------|-------------------------------------------------------------------------------------|------------------------------------|----------------------------------------------------------------|
| | | mm | INCH | | | | | | | | | | | | | | | | | | |
| | 4 PLACES | ± --- | ±.0015 | | | | | | | | | | | | | | | | | | |
| | 3 PLACES | ± 0.038 | ±.005 | | | | | | | | | | | | | | | | | | |
| 2 PLACES | ± 0.13 | ±.01 | | | | | | | | | | | | | | | | | | | |
| 1 PLACE | ± 0.3 | ± --- | | | | | | | | | | | | | | | | | | | |
| ANGULAR ± 2 ° | DRAFT WHERE APPLICABLE MUST REMAIN WITHIN DIMENSIONS | MATERIAL NO. SEE CHART | DATE DATE | MOLEX MOLEX INCORPORATED | DATE DATE | MOLEX MOLEX INCORPORATED | | | | | | | | | | | | | | | |
| | | MATERIAL NO. SEE CHART | DATE DATE | MOLEX MOLEX INCORPORATED | DATE DATE | MOLEX MOLEX INCORPORATED | | | | | | | | | | | | | | | |
| | | SIZE B | DATE DATE | MOLEX MOLEX INCORPORATED | DATE DATE | MOLEX MOLEX INCORPORATED | | | | | | | | | | | | | | | |

9 8 7 6 5 4 3 2 1