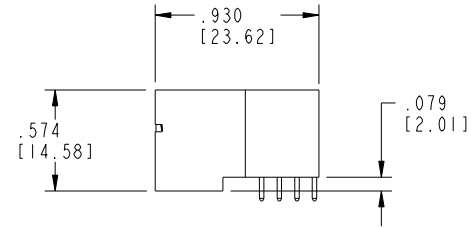
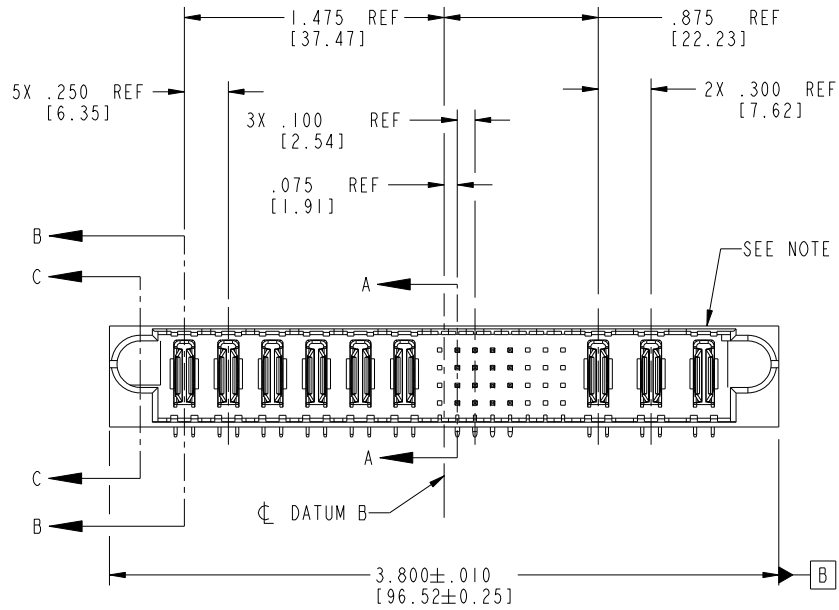


Tous droits strictement reserves. Reproduction ou communication a des tiers interdite sous quelque forme que ce soit sans autorisation écrite du propriétaire. Propriete de c FCI. Droits de reproduction FCI.



All rights strictly reserved. Reproduction or issue to third parties in any form whatever is not permitted without written authority from the proprietor. Property of FCI. Copyright FCI.

PRODUCT NO.	ROWS	POWER						SIGNAL								POWER			E2	
		E1	P1	P2	P3	P4	P5	P6	1	2	3	4	5	6	7	8	P7	P8		P9
51935-002	D C B A		PA	PA	PA	PA	PA	PA	X	H	U	U	X	X	X	X	PA	PA	PA	
NOTE: ③									X	T	G	T	X	X	X	X				
									X	S	S	S	X	X	X	X				
									X	R	R	R	X	X	X	X				



CODE	DIM "M" MATING LENGTH	CONTACT TYPE
G	.220 [5.59]	SIGNAL
H	.220 [5.59]	SIGNAL
R	.270 [6.86]	SIGNAL
S	.270 [6.86]	SIGNAL
T	.270 [6.86]	SIGNAL
U	.270 [6.86]	SIGNAL
PA	N/A [N/A]	POWER
X	OMITTED	OMITTED

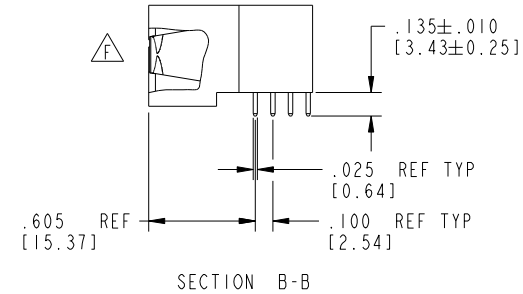
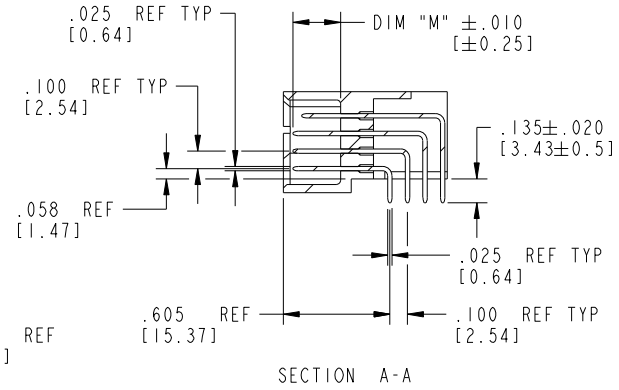
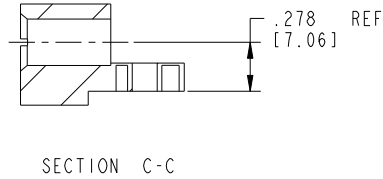
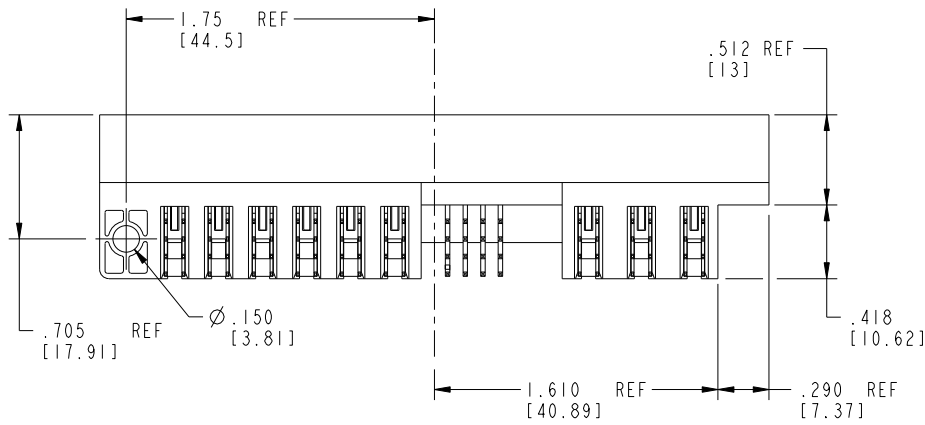
mat'l code				SEE NOTE 2		tolerances unless otherwise specified		CUSTOMER		 www.fciconnect.com	
ltr	ecn no.	dr	date	linear	.XX±.01/0.X±0.3		COPY		title		
A	V20024	DAI	01/18/02		.XXX±.005/0.XX±0.13		projection		6P + 32S + 3P		
B	V20464	DAI	03/07/02	angles	.XXX±.002/0.XXX±0.051		 INCH/MM		RIGHT ANGLE SOLDER HEADER w/ GUIDE POST		
C	V21561	CGD	10/02/02		0°+2°		scale		product family		
D	DG05-0216	SJ	07/11/05	dr	D. INGRAM	01/18/02	1:1		PwrBlade		code
E	DG06-0005	JMG	01/07/06	enr	M.MOSTOLLER	01/18/02	A		size		213
F	DG08-0273	WD	12/24/08	chr	M.MOSTOLLER	01/18/02			dwg no		sheet
				appd	M.MOSTOLLER	01/18/02			51935-002		1 of 4
sheet index	revision sheet	F 1	F 2	F 3	F 4						

cage code 22526

Tous droits strictement réservés. Reproduction ou communication à des tiers interdite sous quelque forme que ce soit sans autorisation écrite du propriétaire. Propriété de c FCI. Droits de reproduction FCI.

All rights strictly reserved. Reproduction or issue to third parties in any form whatsoever is not permitted without written authority from the proprietor. Property of FCI. Copyright FCI.

PRODUCT NUMBER
51935-002--
NOTE: ③



mat'l code		SEE NOTE 2		tolerances unless otherwise specified		CUSTOMER		FCI		www.fciconnect.com	
ltr	ecn no.	dr	date	linear	.XX±.01/0.X±0.3	COPY		title 6P + 32S + 3P RIGHT ANGLE SOLDER HEADER w/ GUIDE POST			
F					.XXX±.005/0.XX±0.13	projection					
				angles	.XXX±.0020/0.XXX±0.051	INCH/MM		product family		code	
				dr	0°±2°	scale		PwrBlade		213	
				enrg	D. INGRAM 01/18/02	1:1		size		sheet	
				chr	M. MOSTOLLER 01/18/02			dwg no		2 of 4	
				appd	M. MOSTOLLER 01/18/02			51935-002			
sheet index	revision sheet										

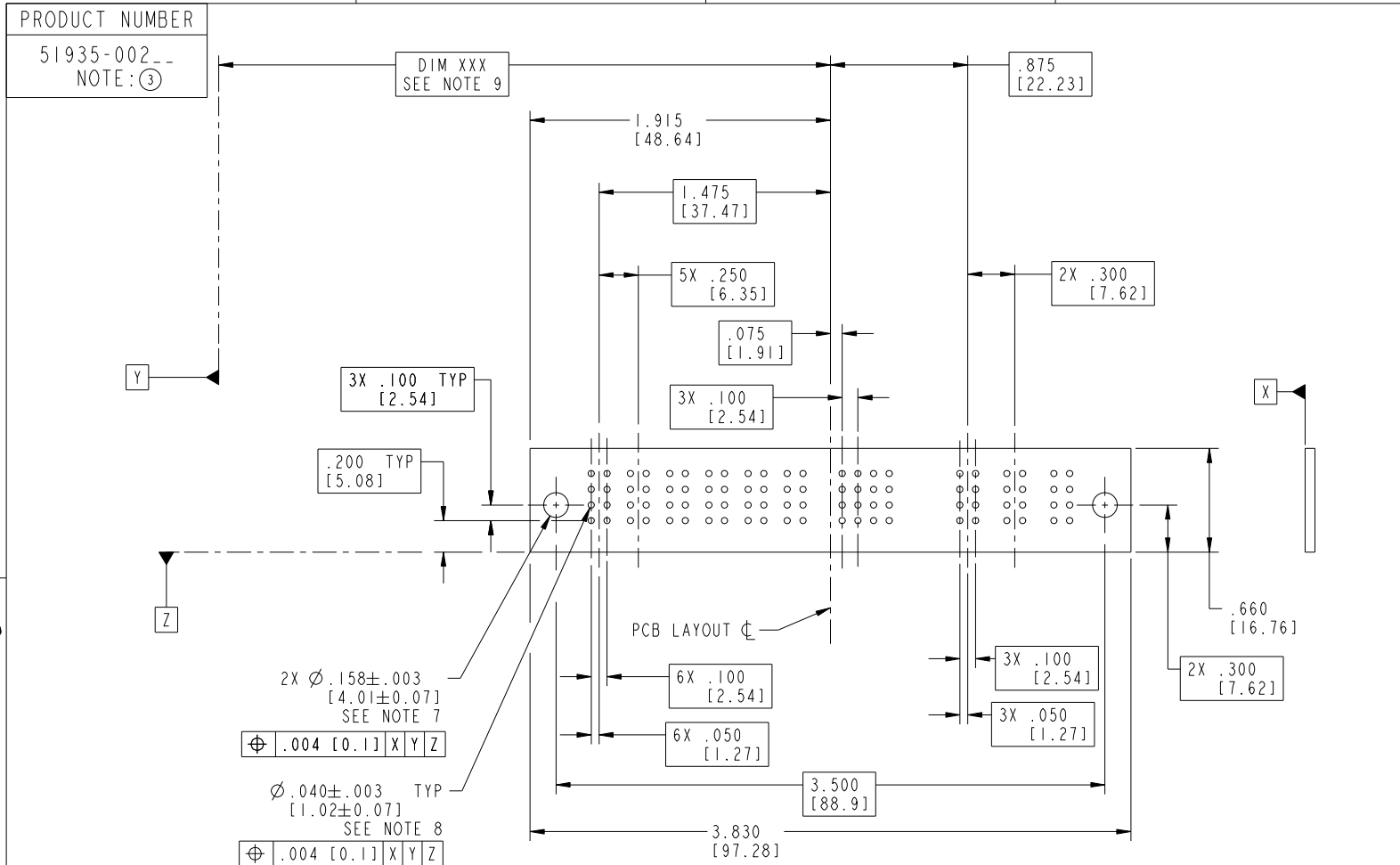
cage code 22526

Pro/E

Tous droits strictement reserves. Reproduction ou communication a des tiers interdite sous quelque forme que ce soit sans autorisation écrite du propriétaire. Propriete de c FCI. Droits de reproduction FCI.



All rights strictly reserved. Reproduction or issue to third parties in any form whatsoever is not permitted without written authority from the proprietor. Property of FCI. Copyright FCI.



RECOMMENDED PCB LAYOUT

mat'l code		SEE NOTE 2		tolerances unless otherwise specified		CUSTOMER		 www.fciconnect.com	
ltr	ecn no.	dr	date	linear	.XX±.01/0.X±0.3		COPY		 title 6P + 32S + 3P RIGHT ANGLE SOLDER HEADER w/ GUIDE POST
F					.XXX±.005/0.XX±0.13		projection		
					.XXX±.002/0.XXX±0.051		 INCH/MM		
				angles	0°±2°		scale		product family PwrBlade code 213
				dr	D. INGRAM 01/18/02		size		dwg no 51935-002 sheet 3 of 4
				enrg	M.MOSTOLLER 01/18/02		A		
				chr	M.MOSTOLLER 01/18/02		1:1		
				appd	M.MOSTOLLER 01/18/02				
sheet index	revision sheet								cage code 22526

1 | 2

Pro/E

3 |

cage code 22526

4



All rights strictly reserved. Reproduction or issue to third parties in any form whatsoever is not permitted without written authority from the proprietor. Property of FCI. Copyright FCI.

Tous droits strictement reserves. Reproduction ou communication a des tiers interdicte sous quelque forme que ce soit sans autorisation ecrite du proprietaire. Propriete de c FCI. Droits de reproduction FCI.

PRODUCT NUMBER
51935-002--
NOTE: ③

NOTES:

1. DIMENSIONS AND TOLERANCES ARE IN ACCORDANCE WITH ASME Y14.5M, 1994 UNLESS OTHERWISE SPECIFIED.

CONNECTORS NOTES:

2. HOUSING MATERIAL: UL 94 V-0 GLASS FILLED HIGH TEMP THERMO PLASTIC
POWER CONTACT MATERIAL: COPPER ALLOY
SIGNAL PIN MATERIAL: COPPER ALLOY

③ 3. SEE ITEM 1 & 2 IN PRINT 10064183 FOR PLATING SPEC OF 51935-002 AND 51935-002LF RESPECTIVELY.

4. "MANUFACTURER" NAME, P/N, AND DATE CODE TO APPEAR ON THIS SURFACE.

5. PRODUCT SPECIFICATION GS-12-149.

PCB - NOTES:

6. ALL HOLE DIAMETERS ARE FINISHED HOLE SIZE.

7. HOLD DOWN THROUGH HOLES ARE UNPLATED.

8. $\varnothing .0453 \pm 0.0010$ [1.151 ± 0.025] DRILLED HOLES PLATED WITH 0.0003 [0.008] MIN SnPb OVER $.001$ [0.03] TO $.003$ [0.08] Cu PLATING TO ACHIEVE $\varnothing .040 \pm .003$ [$1.02 \pm .07$] HOLE.

9. "DIM XXX" TO BE DETERMINED BY THE CUSTOMER.

10. A ③ SYMBOL WILL BE NEXT TO ANY DIMENSION, VIEW, OR NOTE WHICH HAS BEEN MODIFIED WITH THE CURRENT DRAWING REVISION.

mat'l code		SEE NOTE 2		tolerances unless otherwise specified		CUSTOMER		FCI		www.fciconnect.com	
ltr	ecn no.	dr	date	linear	.XX+ .01/0.X+0.3	COPY		title			
F					.XXX+ .005/0.XX+0.13	projection		6P + 32S + 3P			
				angles	.XXX+ .002/0.XXX+0.051			RIGHT ANGLE SOLDER HEADER w/ GUIDE POST			
				dr	0° + 2°	INCH/MM		product family		code	
				enr	D. INGRAM 01/18/02	scale		PwrBlade		213	
				chr	M.MOSTOLLER 01/18/02	1:1		size		sheet	
				appd	M.MOSTOLLER 01/18/02			A		4 of 4	
sheet index		revision sheet									

cage code 22526