

EK50ML120 • EK50ML138 MICRO CRIMPING TOOL



CRIMP **3X FASTER** WITH 90% LESS FORCE

USA PHONE 800.435.0786
FAX 800.451.2632

CANADA PHONE 866.384.8813
FAX 800.524.2853

INT'L PHONE +1.815.397.7070
FAX +1.815.397.9247



GREENLEE®
A Textron Company

TIMES CHANGE. SO DO REQUIREMENTS.

FAST

- 65% faster crimping cycle vs ratcheting tool
- 250 crimps per cycle charge*

ERGONOMIC

- Total weight 2.2 lbs
- Reduces hand force from 53 lbs to 6 lbs

INTELLIGENT

- Gator Eye™ crimping diagnostics
- LED multi-functional light to ensure crimp is complete

*When crimping 10AWG wire.



FEATURES

- LED work light
- Patented Jaw Actuation for crimping cycle
- Innovative trigger with PowerSense™ Technology
- Overmolded grip for maximum comfort
- 10.8V Li-Ion battery with charge indicator



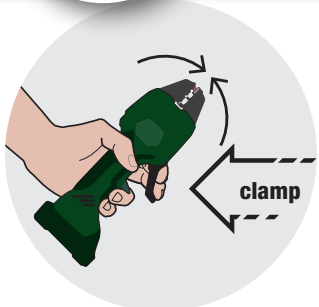
Monitors statistical performance of all cycles, integrity of operations, and manages inventory with user identifiable information.



THE REVOLUTIONARY POWERSENSE™ FUNCTION

1. Manual Clamping

PowerSense™ Technology: Pull trigger part way and adjust material to ideal position before crimping.



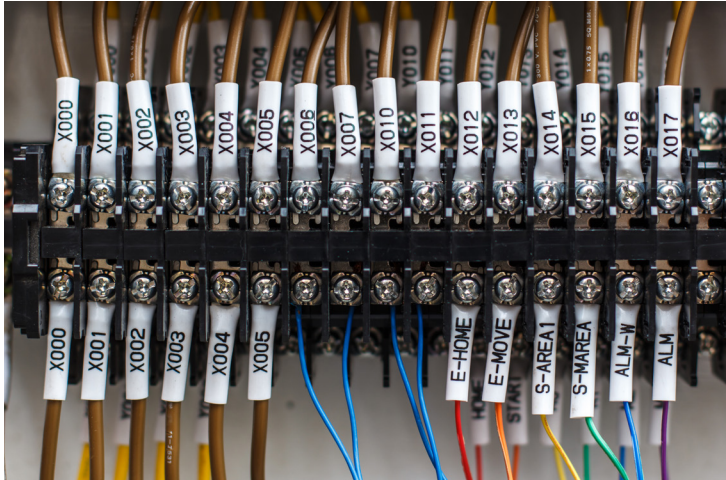
2. Motorized Crimping

Depress trigger completely to activate motorized crimp.



Fast. Ergonomic. Intelligent.

EK50ML - THE WAY YOU CRIMP TODAY



29% OF ALL INJURIES INVOLVING REPETITIVE USE OF TOOLS RESULT IN CARPAL TUNNEL SYNDROME.

- Bureau of Labor Statistics

ACCORDING TO THE NATIONAL COUNCIL OF COMPENSATION INSURANCE, THE TYPICAL COST OF CARPAL TUNNEL SURGERY IS

\$33,000

"By using the Greenlee Micro Crimper, we were able to nearly eliminate hand fatigue in our high volume crimping operations. Use of this tool will go a long way toward eliminating carpal tunnel syndrome risks."

- Universal Electric Corporation

90% **HAND FORCE REDUCTION**



3. ... and Done

Release trigger and jaws will open automatically.



FOR YOUR LARGER CRIMPING NEEDS

EK6IDL CRIMPING TOOL

- **Tool marking** – Provides clear marking of crimped connectors
- **Flip top style rotating head**
- **Intelli-CRIMP™** technology measures pressure and amperage 32 times a second
 - Two-stage telescopic design identifies correct pressure to apply
- **Single trigger** operation for controlling all tool functions
- **Broad crimp range** for stranded and fine stranded wire class



EK50ML120

EK50ML138

ORDERING INFORMATION

CAT. NO.	UPC NO.	DESCRIPTION
EK50ML12011	03105	Crimping tool kit with 12mm jaw and 110V charger with carrying case
EK50ML13811	03108	Crimping tool kit with 13.8mm jaw and 110V charger with carrying case
EK50ML12022	03123	Crimping tool kit with 12mm jaw and 230V charger with carrying case
EK50ML13822	03124	Crimping tool kit with 13.8mm jaw and 230V charger with plastic carrying case
EK50ML120B	03128	12mm jaw EK50ML bare tool
EK50ML138B	03130	13.8mm jaw EK50ML bare tool
MBP108	03127	10.8V EK50ML Li-Ion Battery
MBC110	03125	10.8V EK50ML Li-Ion Battery Charger, 110V
MBC230	03126	10.8V EK50ML Li-Ion Battery Charger, 230V
EK50MLCASE	03131	EK50ML Carrying Case

FOR PRODUCT VIDEOS,
DEMONSTRATIONS AND MORE,
SCAN THIS QR CODE OR VISIT:

www.youtube.com/GreenleeDEMO



The EK50ML138 is compatible with all Greenlee Kwik Cycle® and CrimpALL® dies for various types of cables and sizes.

COMPATIBLE DIE SETS

	Wezag®	Panduit®	Thomas & Betts®	Ideal®
EK50ML120	CS30, CS150	CT-2600, CT-300	Sta-Kon®	
EK50ML138				Crimpmaster™



www.greenlee.com MA6218 06/14

4455 Boeing Drive • Rockford, IL 61109-2988 • USA • 815-397-7070

©2014 Greenlee Textron Inc. • An ISO 9001 Company • Printed in USA

Greenlee Textron Inc. is a subsidiary of Textron Inc.