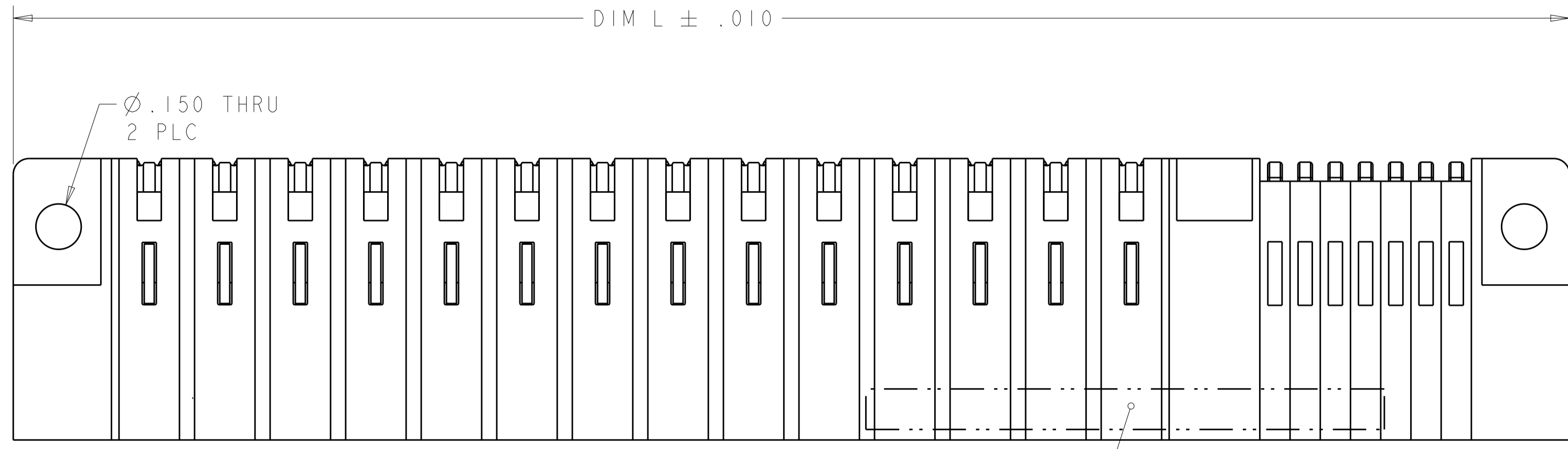
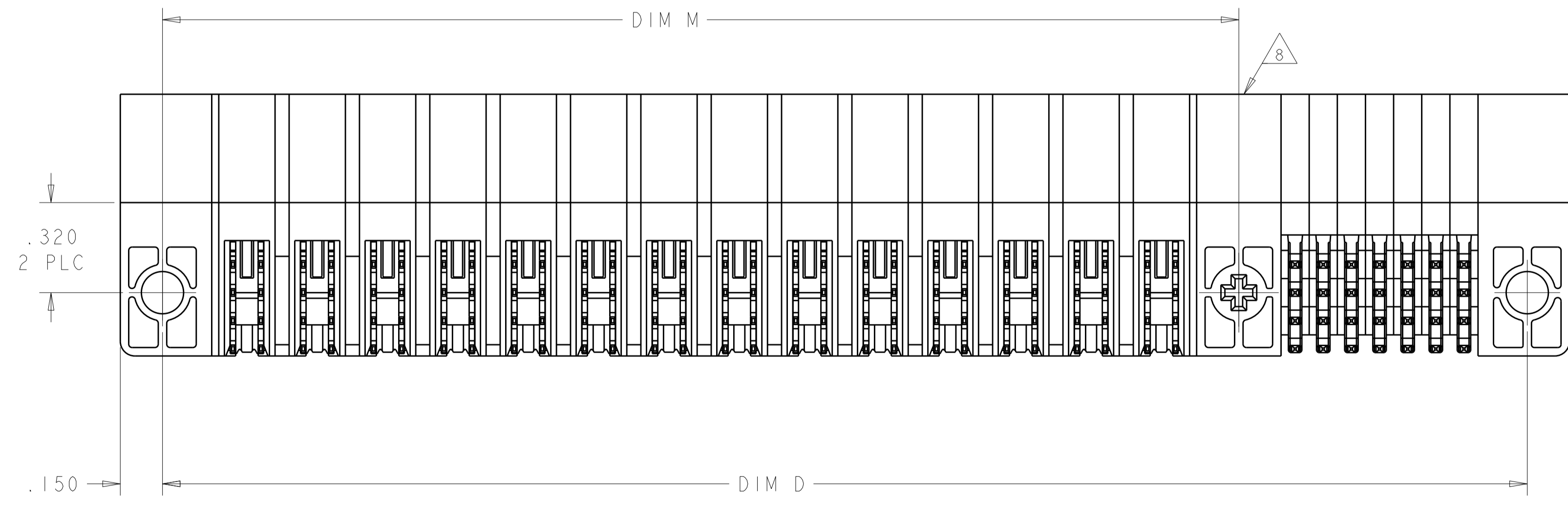
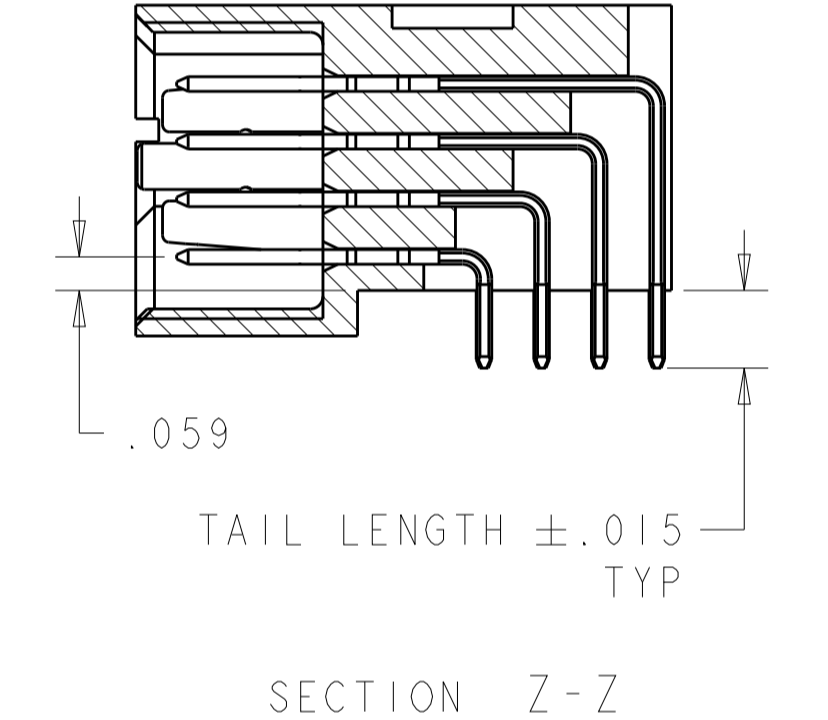
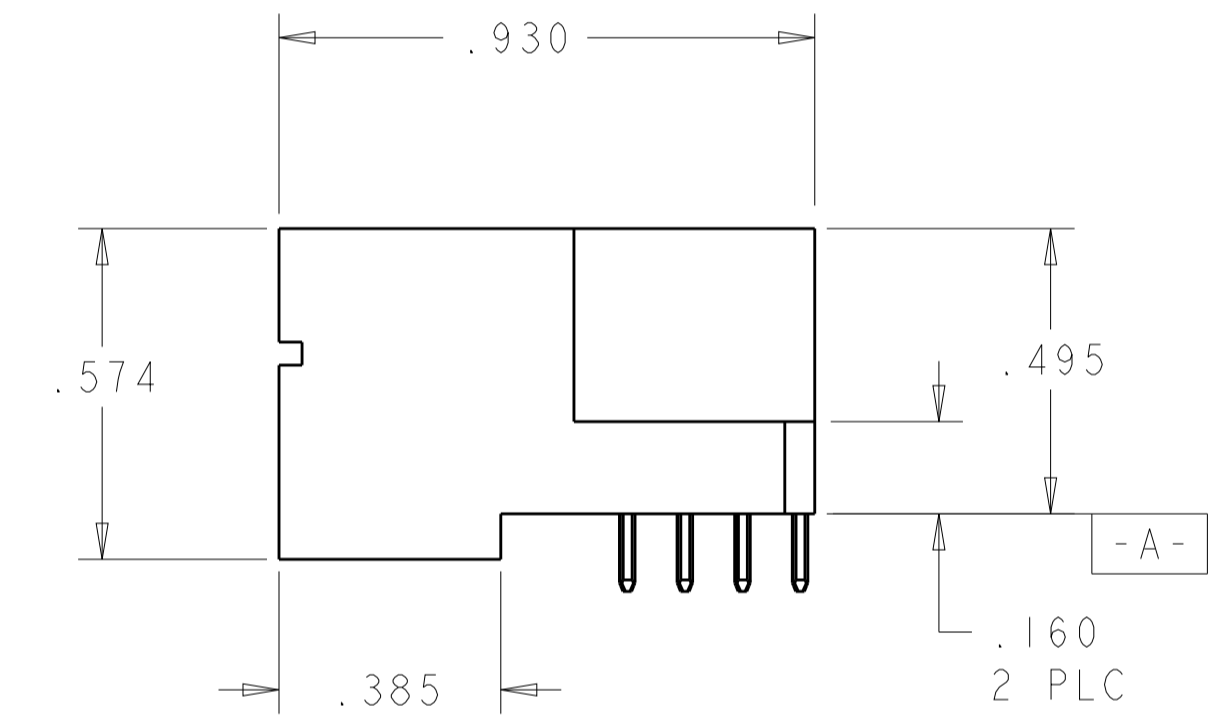
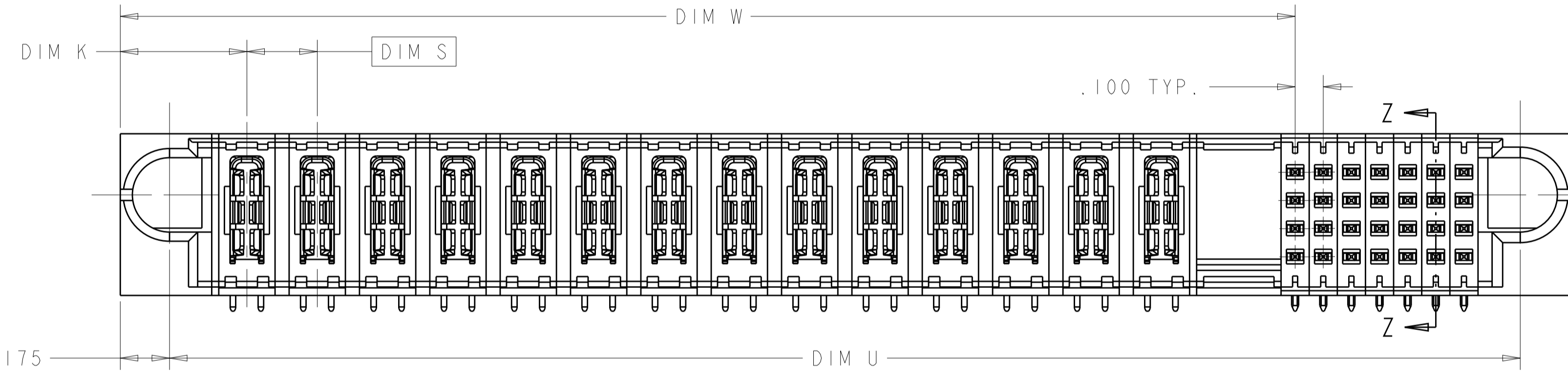


LOC		DIST		REVISIONS			
ES	00	P	LTH	DESCRIPTION	DATE	DWN	APVD
		A4		REV PER ECR-11-006325	21MAR2011	1L	SZ
		A5		REV PER ECR-13-004638	20MAR2013	ML	SZ



- 1 "AMP", PART NUMBER, AND DATECODE TO BE MARKED IN AREA SHOWN.
- 2 MATERIAL: HOUSING - GLASS FILLED HIGH TEMP THERMO PLASTIC, UL94 V-0
 SIGNAL CONTACT - COPPER ALLOY
 POWER CONTACT - HIGH CONDUCTIVITY COPPER ALLOY
- 3 CONTACT PLATING: NOBLE METAL PLATING ON CONTACT FUNCTIONAL AREA OF POWER AND SIGNAL CONTACTS.
- 4 MECHANICAL CONNECTOR KEEP OUT ZONE.
- 5 DATUM AND BASIC DIMENSIONS ESTABLISHED BY CUSTOMER.
- 6 PCB - HOLE DIAMETERS ARE FINISHED HOLE SIZE.
- 7 PCB - .0453±.0010 DRILLED HOLES PLATED WITH .0003 MIN Sn OVER .001 TO .003 Cu PLATING TO ACHIEVE A .040 DIAMETER HOLE.
- 8 OPTIONAL CENTER MODULE
- 9 NOT RELEASED FOR PRODUCTION
- 10 VARIABLE DIMENSIONS SHOWN ON VIEW (SHEET 3 AND 4).



4.425	.200	2.200	4.475		4.775	.450	9P + 92S	1892222-9
6.075	.200	1.375	6.125	-	6.425	.375	36S + 24P	1892222-8
5.100	△	2.375	5.150	-	5.450	.450	8P + 112S	1892222-7
3.800	△	3.175	3.850	-	4.150	.450	12P + 28S	1892222-6
2.275	△	2.050	2.325	-	2.625	.450	5P + 24S	1892222-5
4.500	.250	3.875	4.550	-	4.850	.450	14P + 28S	1892222-4
3.875	△	3.550	3.925	-	4.225	.475	3ACP + 9P + 16S	1892222-3
3.875	△	3.550	3.925	-	4.225	.475	3ACP + 9P + 16S	1892222-2
3.875	△	3.550	3.925	-	4.225	.475	3ACP + 9P + 16S	1892222-1
DIM U	DIM S	DIM W	DIM D	DIM M	DIM L	DIM K	DESCRIPTION	PART NUMBER

THIS DRAWING IS UNPUBLISHED. RELEASED FOR PUBLICATION. IT IS THE PROPERTY OF TYCO ELECTRONICS CORPORATION. IT IS TO BE USED ONLY FOR THE PROJECT AND FOR THE CUSTOMER'S ORGANIZATION. SHOULD BE CONTACTED FOR THE LATEST REVISION.

DWN: Alex Shuai
 CHK: Zhao Suny
 APVD: Siqiang Yao
 DATE: SEP01'06
 NAME: RIGHT ANGLE SOLDER HEADER ASSEMBLY MULTI-BEAM XL USING MBXL CONTACTS
 PRODUCT SPEC: 108-1973
 APPLICATION SPEC: 114-13038
 WEIGHT: -
 SCALE: 4:1
 SHEET: 1 OF 6
 REV: A5
 CUSTOMER DRAWING

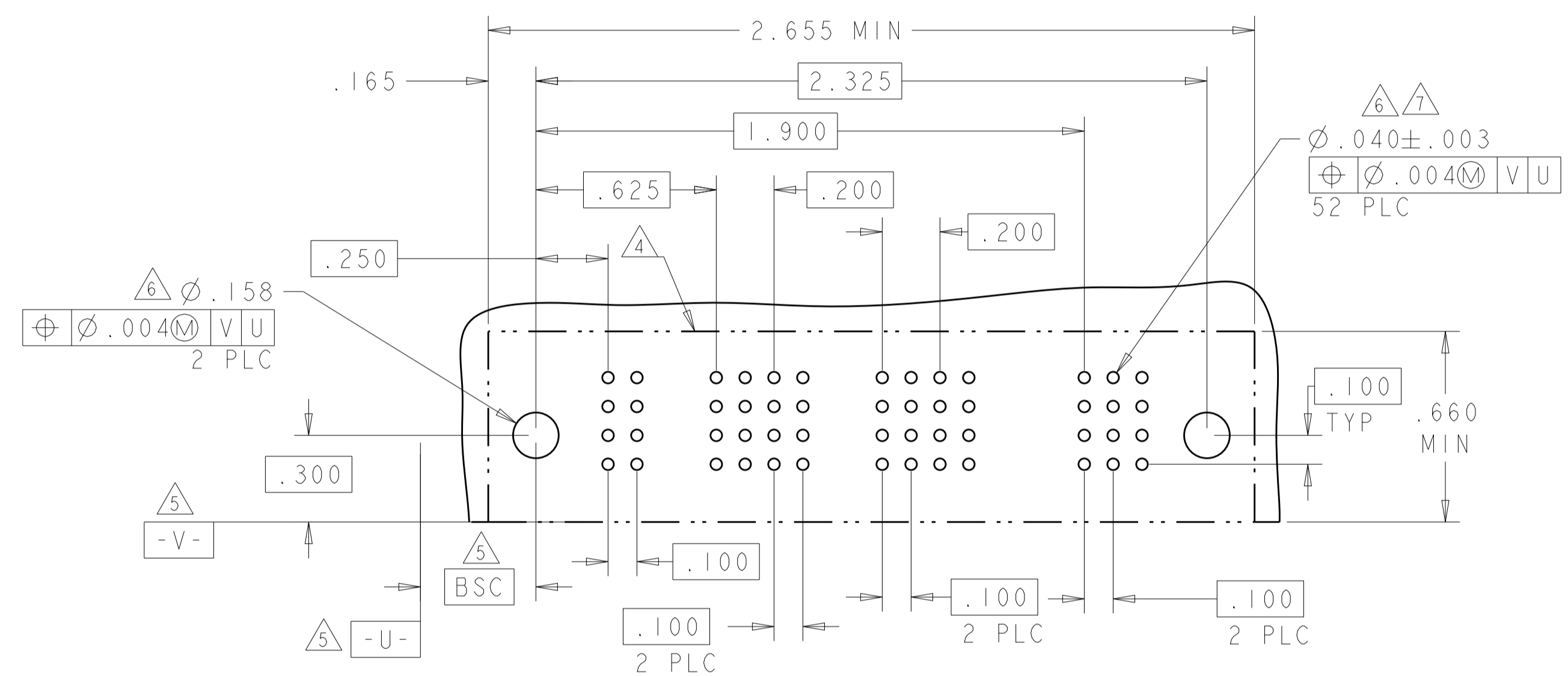
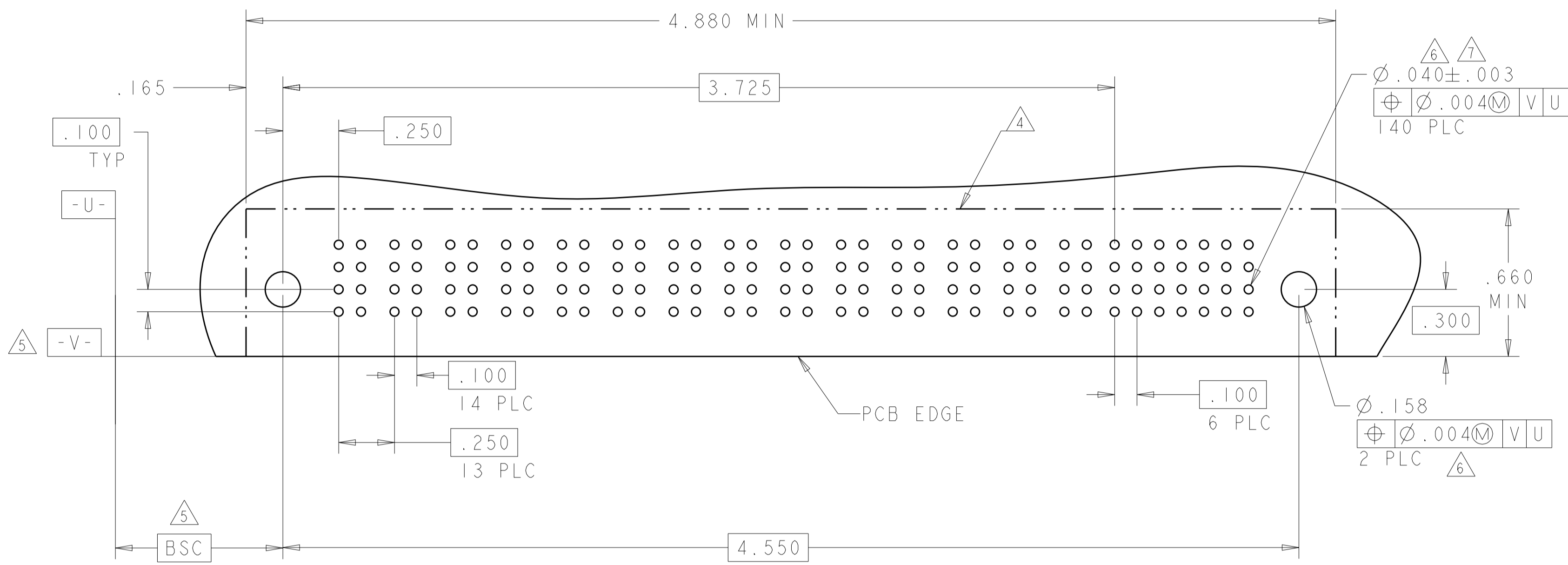
DIMENSIONS: INCHES
 TOLERANCES UNLESS OTHERWISE SPECIFIED:
 0 PLC ±.
 2 PLC ±.01
 3 PLC ±.005
 4 PLC ±.0020
 ANGLES ±.0°

MATERIAL: △
 FINISH: △

LOC	DIST	REVISIONS					
ES	00	P	LTM	DESCRIPTION	DATE	DWN	APVD
				SEE SHEET 1			

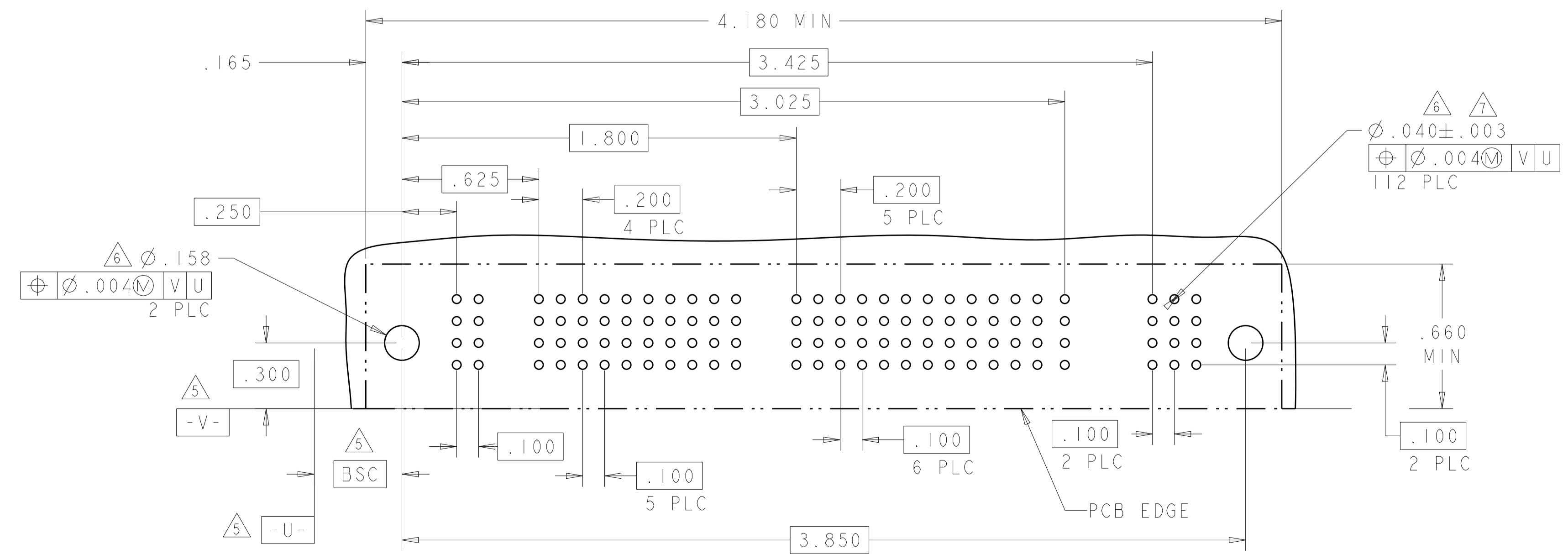
ASSY PART NUMBER	ROWS	POWER														SIGNAL						
		P1	P2	P3	P4	P5	P6	P7	P8	P9	P10	P11	P12	P13	P14	1	2	3	4	5	6	7
1892222-4	D C B A	TM	TM	TM	TM	TM	TM	TM	TM	TM	TM	TM	TM	TM	E	E	E	E	E	E	E	E
14P + 28S														F	F	F	F	F	F	F	F	
														G	G	G	G	G	G	G	G	
														S	S	S	S	S	S	S	S	

PART NUMBER	ROWS	POWER					SIGNAL					
		P1	P2	P3	P4	P5	1	2	3	4	5	6
1892222-5	D C B A	TM	TM	TM	TM	TM	J	J	J	J	J	J
5P + 24S							K	K	K	K	K	K
							N	N	N	N	N	N
							S	S	S	S	S	S



PART NUMBER	ROWS	POWER												SIGNAL						
		P1	P2	P3	P4	P5	P6	P7	P8	P9	P10	P11	P12	1	2	3	4	5	6	7
1892222-6	D C B A	TM	TM	TM	TM	TM	TM	TM	TM	TM	TM	TM	J	J	J	J	J	J	J	
12P + 28S												K	K	K	K	K	K	K		
												N	N	N	N	N	N	N		
												S	S	S	S	S	S	S		

Z	STD	.090	D
Y	STD	.090	C
R	STD	.090	B
O	STD	.090	A
A4	MLBF	.090	D
A3	MLBF	.090	C
A2	MLBF	.090	B
A1	MLBF	.090	A
E	MLBF	.135	D
F	MLBF	.135	C
G	MLBF	.135	B
H	MLBF	.135	A
J	STD	.135	D
K	STD	.135	C
N	STD	.135	B
S	STD	.135	A
CODE	MATING SEQUENCE	TAIL LENGTH	ROW
POWER CONTACT		SIGNAL CONTACT	



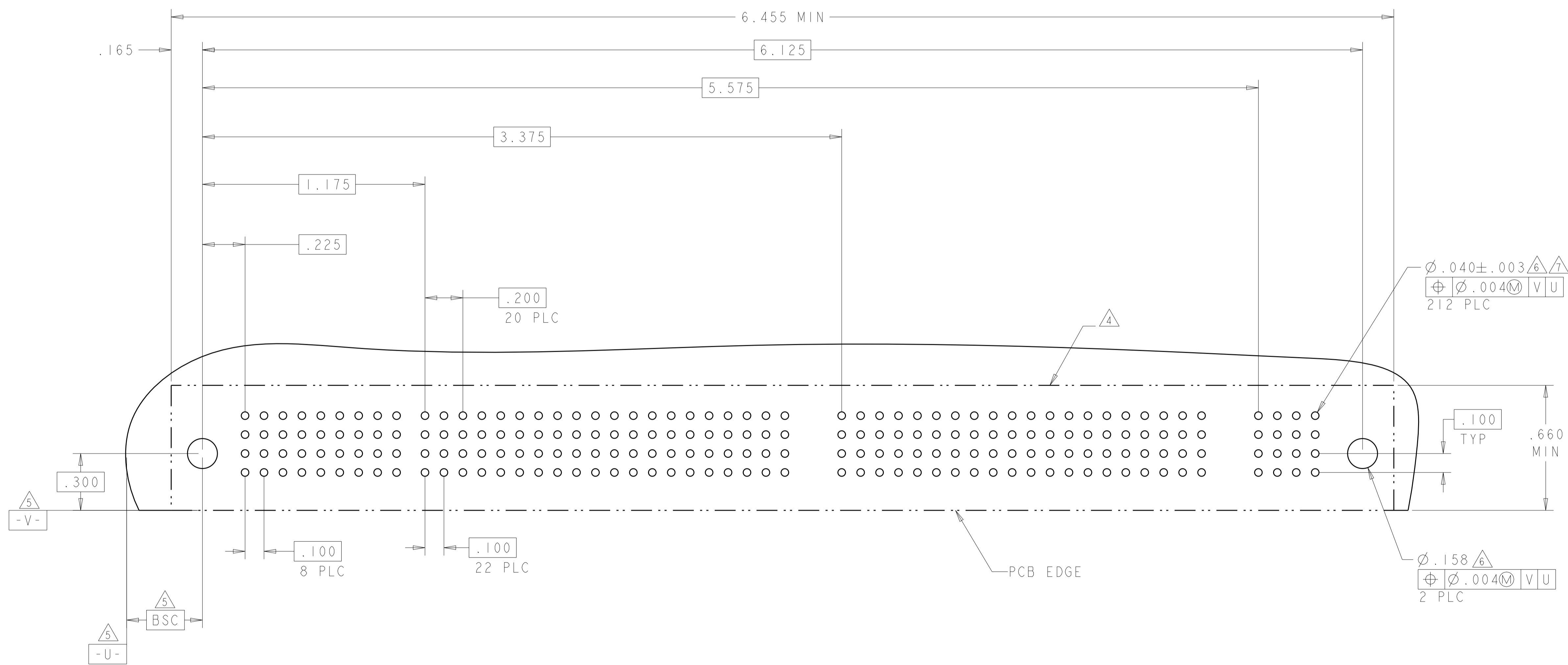
TM	.135
CODE	TAIL LENGTH
POWER CONTACT	

<small>THIS DRAWING IS UNPUBLISHED. RELEASED FOR PUBLICATION BY TYCO ELECTRONICS CORPORATION. ALL RIGHTS RESERVED.</small>		DWN Alex Shogal SEP01'06 CHK Zhao Suny SEP01'06 APVD Steven Yao SEP01'06	STE Tyco Electronics Shanghai R.P.C. 200233
DIMENSIONS: INCHES TOLERANCES UNLESS OTHERWISE SPECIFIED: 0 PLC ±.01 1 PLC ±.01 2 PLC ±.01 3 PLC ±.005 4 PLC ±.002 ANGLES ±.020	PRODUCT SPEC 108-1973 APPLICATION SPEC 114-13038 WEIGHT FINISH	NAME RIGHT ANGLE SOLDER HEADER ASSEMBLY MULTI-BEAM XL USING MBXLE CONTACTS SIZE CAGE CODE DRAWING NO. 00779 C=1892222 RESTRICTED TO	CUSTOMER DRAWING SCALE 4:1 SHEET 2 OF 6 REV A5

LOC	DIST	REVISIONS			
P	LTN	DESCRIPTION	DATE	DMN	APVD
-	-	SEE SHEET 1	-	-	-

(A4)

PART NUMBER	ROWS	SIGNAL									POWER																						
		1	2	3	4	5	6	7	8	9	P1	P2	P3	P4	P5	P6	P7	P8	P9	P10	P11	P12	P13	P14	P15	P16	P17	P18	P19	P20	P21	P22	P23
1892222-8	D	J	J	J	J				J	J																							
	C	K	K	K	K				K	K	TM	TM	TM	TM	TM	TM	TM	TM	TM	TM	TM	TM	TM	TM	TM	TM	TM	TM	TM	TM	TM	TM	
	B	N	N	N	N				N	N																							
	A	S	S	S	S				S	S																							
36S + 24P																																	

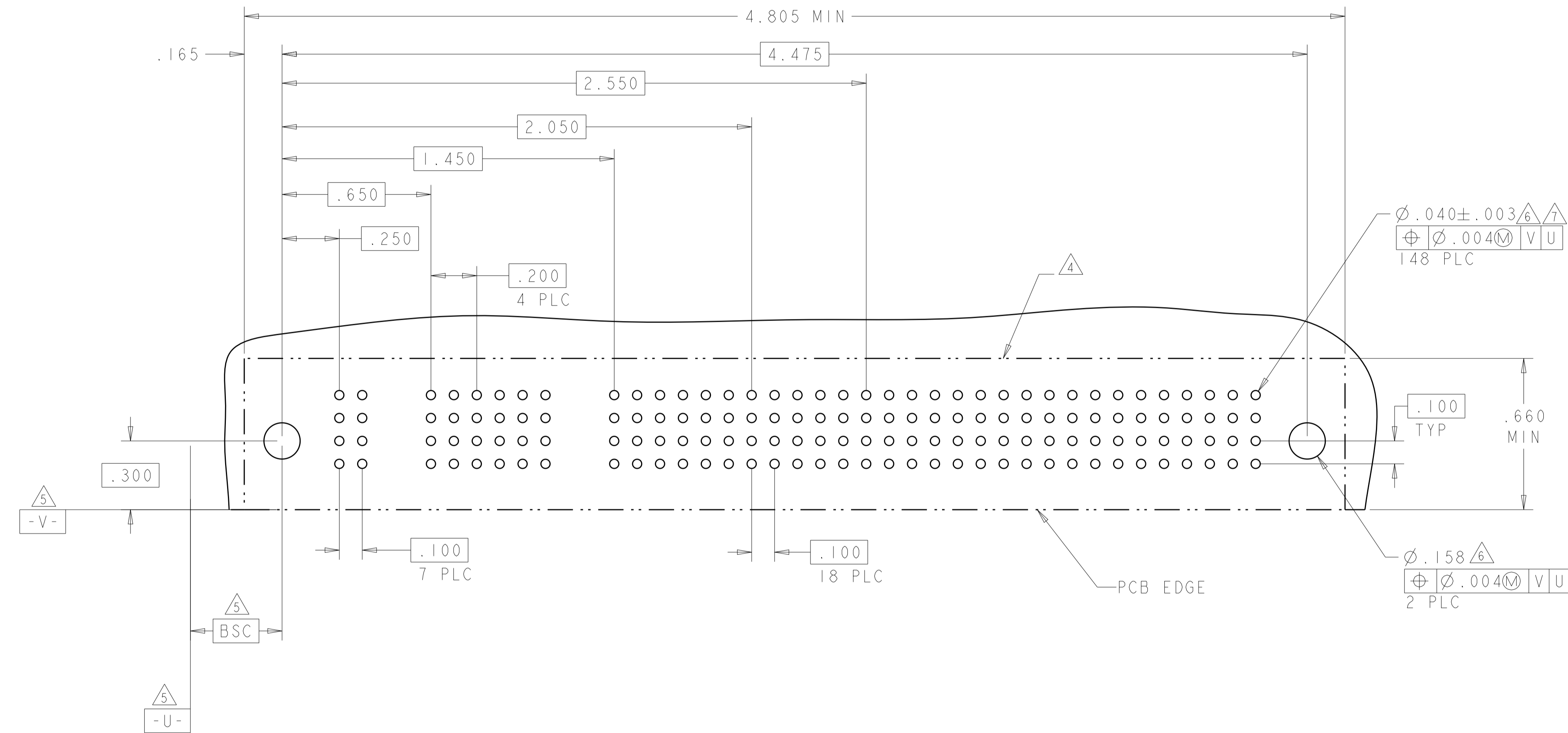


<small>THIS DRAWING IS UNPUBLISHED. RELEASED FOR PUBLICATION. IT IS THE PROPERTY OF TYCO ELECTRONICS CORPORATION. IT IS TO BE USED ONLY FOR THE PURPOSES AND IN THE QUANTITIES SPECIFIED IN THE ORDER. IT IS TO BE RETURNED TO TYCO ELECTRONICS CORPORATION UPON COMPLETION OF THE PROJECT.</small>		DMN Alex Shogal SEP01'06 CHK Zhao Suny SEP01'06 APVD Siqiang Yao SEP01'06	STE Tyco Electronics Shanghai R.P.C. 200233 connectivity
DIMENSIONS: INCHES	TOLERANCES UNLESS OTHERWISE SPECIFIED: 0 PLC ±. 1 PLC ±.01 2 PLC ±.01 3 PLC ±.005 4 PLC ±.0020 ANGLES ±.7°	NAME RIGHT ANGLE SOLDER HEADER ASSEMBLY MULTI-BEAM XL USING MBXL CONTACTS PRODUCT SPEC 108-1973 APPLICATION SPEC 114-13038 WEIGHT - CUSTOMER DRAWING	SIZE A1 CAGE CODE 00779 DRAWING NO. 1892222 SCALE 4:1 SHEET 5 OF 6 REV A5

LOC	DIST	REV	DATE	BY	APPD
ES	00				

REVISIONS					
REV	DATE	DESCRIPTION	BY	APPD	DATE
-	-	SEE SHEET 1	-	-	-

PART NUMBER	ROWS	POWER									SIGNAL																				
		P1	P2	P3	P4	P5	P6	P7	P8	P9	1	2	3	4	5	6	7	8	9	10	11	12	13	14	15	16	17	18	19	20	21
1892222-9	D										J	J				J	J	J	J	J	J	J	J	J	J	J	J	J	J	J	J
	C										K	K				K	K	K	K	K	K	K	K	K	K	K	K	K	K	K	K
	B										N	N				N	N	N	N	N	N	N	N	N	N	N	N	N	N	N	N
	A										S	S				S	S	S	S	S	S	S	S	S	S	S	S	S	S	S	S
9P + 92S																															



<small>THIS DRAWING IS UNPUBLISHED. RELEASED FOR PUBLICATION BY TYCO ELECTRONICS CORPORATION. ALL RIGHTS RESERVED.</small>		DWN Alex Shogal SEP01'06 CHK Zhao Suny SEP01'06 APVD Steven Yao SEP01'06	STE Tyco Electronics Shanghai R.P.C. 200233 <small>connectivity</small>
DIMENSIONS: INCHES	TOLERANCES UNLESS OTHERWISE SPECIFIED: 0 PLC ±. 1 PLC ±.01 2 PLC ±.01 3 PLC ±.005 4 PLC ±.0020 ANGLES ±.7°	NAME RIGHT ANGLE SOLDER HEADER ASSEMBLY MULTI-BEAM XL USING MBXL CONTACTS PRODUCT SPEC 108-1973 APPLICATION SPEC SIZE 114-13038 WEIGHT MATERIAL FINISH	CUSTOMER DRAWING SCALE 4:1 SHEET 6 OF 6 REV A5
MATERIAL: - FINISH: -		WEIGHT: - SIZE: 114-13038 CAGE CODE: A1100779 DRAWING NO: 1892222	RESTRICTED TO: -