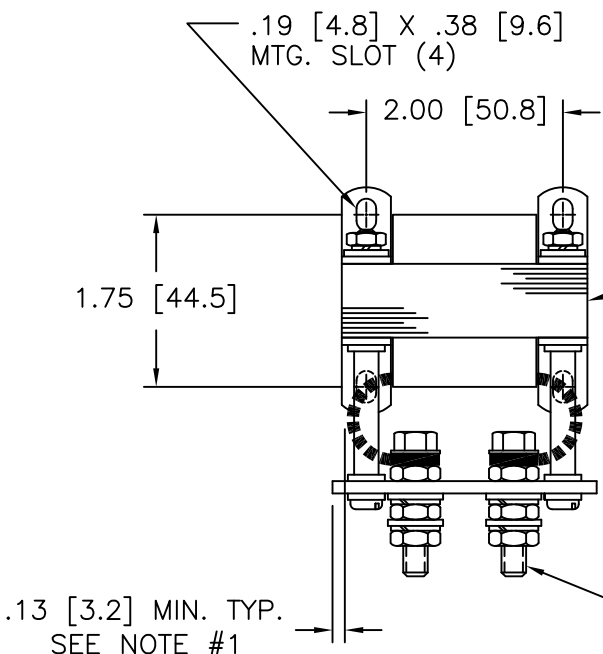
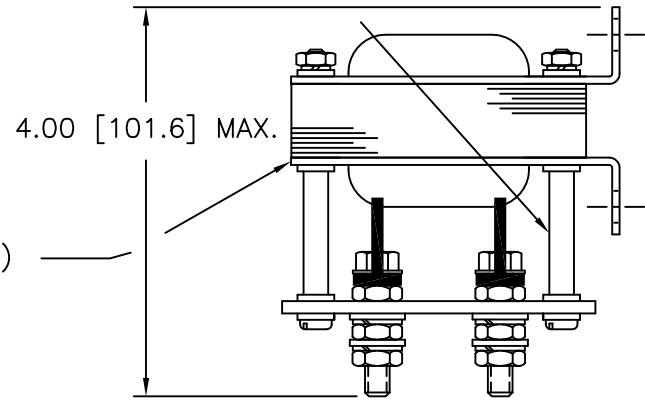


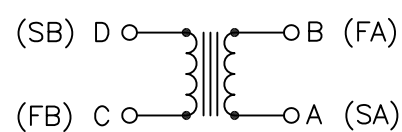
DWG. NO.	850-0181		
DWG. SIZE	C		
REVISIONS			
SYM.	E.C.N.	DATE	APVD.
K	24803	4/3/02	
REDRAWN TO CAD			



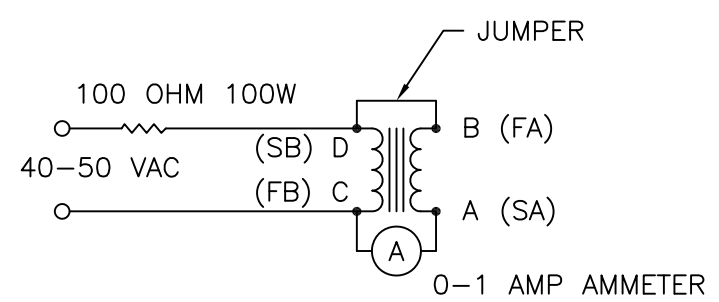
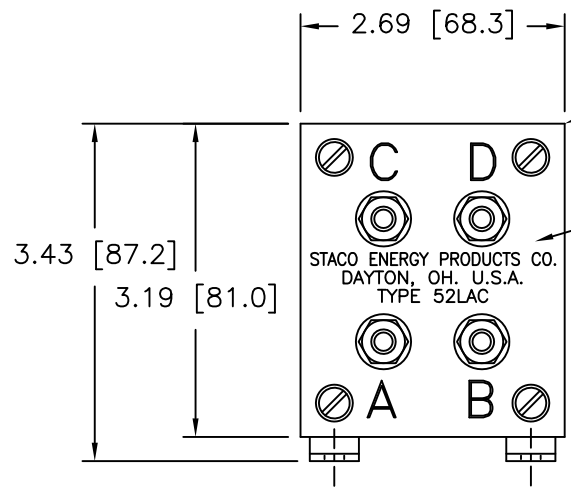
- 620-0908 SPACER (4)
- 596-0228-N6 #8-32 X 2-3/4 PHSMS (4)
- 732-0545-N6 #8 FWS (16)
- 732-0351-N6 #8 SLWS (4)
- 472-0101-N6 #8-32 HMSNS (4)



- 596-2145-N6 1/4-20 X 1-1/4 HHSMS (4)
- 472-0163-N6 1/4-20 HMSNS X .156 THK. (12)
- 732-0381-N6 1/4 SLWS (8)
- 732-0565-N6 #12 FWS (8)



SCHEMATIC



TEST CIRCUIT

NOTE:
1. CHOKE LEAD: SHALL BE DRESSED WITHIN INDICATED DIMENSION

READ APPROX. 0.2 AMPERES BETWEEN "C" AND "D" IF THE START AND FINISH OF EITHER WINDING IS REVERSED THE AMMETER WILL READ ZERO

UNLESS OTHERWISE SPECIFIED, TOLERANCE IS ±				UNITS		TITLE:		
DECIMALS	HOLES	ANGLES	DRAFT	IN [mm]		OUTLINE CHOKE TYPE: 52LAC		
.XX	.0005	.002	1° - 1-1/2°	MATERIAL:		DRAWN BY TIM RAU		A Components Corporation of America Company 3025 Gaddis Boulevard Dayton, Ohio 45403 USA
ALL DIMENSIONS APPLY AFTER PLATING				CHECKER SAS		DATE 4/9/02		
The information and design disclosed herein was originated by and is the property of STACO ENERGY PRODUCTS CO., which reserves all patent, proprietary, design, manufacturing, reproduction, use and sale rights thereto, and to any article disclosed therein except to the extent rights are expressly granted to others. The foregoing does not apply to vendor proprietary parts.				ENGINEER		DATE		
				SCALE		1=1		DO NOT SCALE DWG. WEIGHT APPROX. CAGE CODE 83008 DWG. SIZE C
				SHEET		1 OF 1		DWG. NO. 850-0181