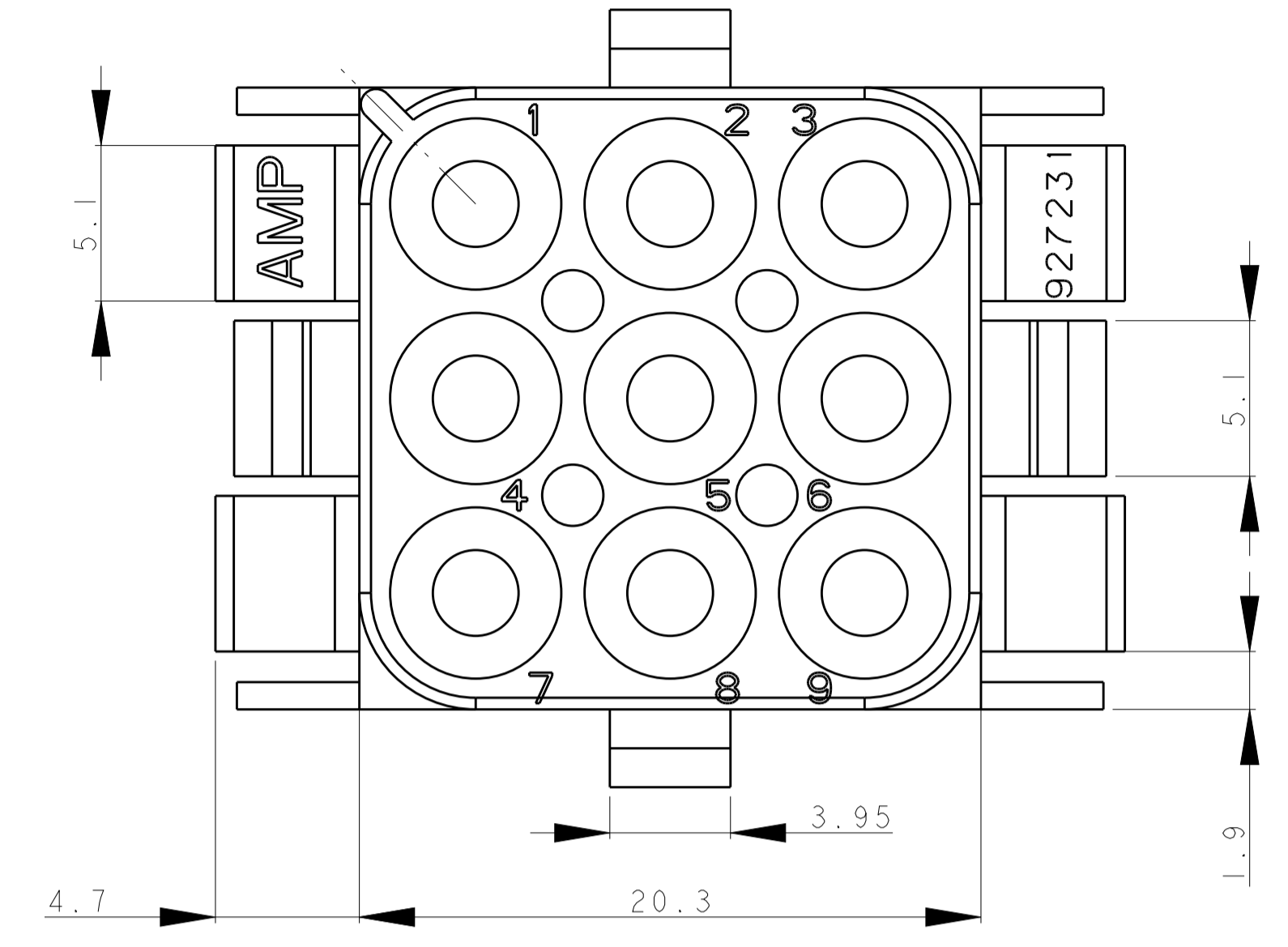
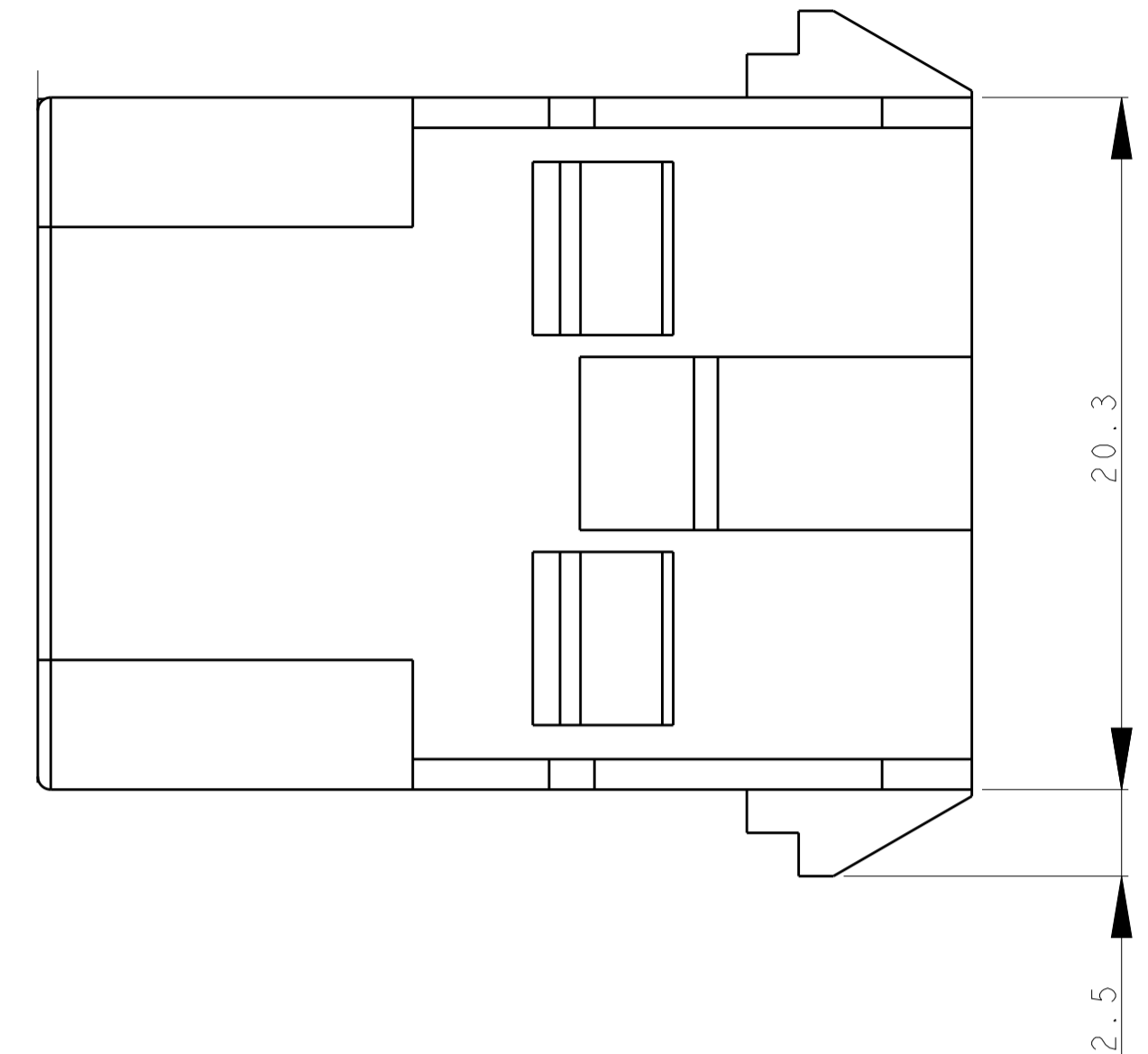
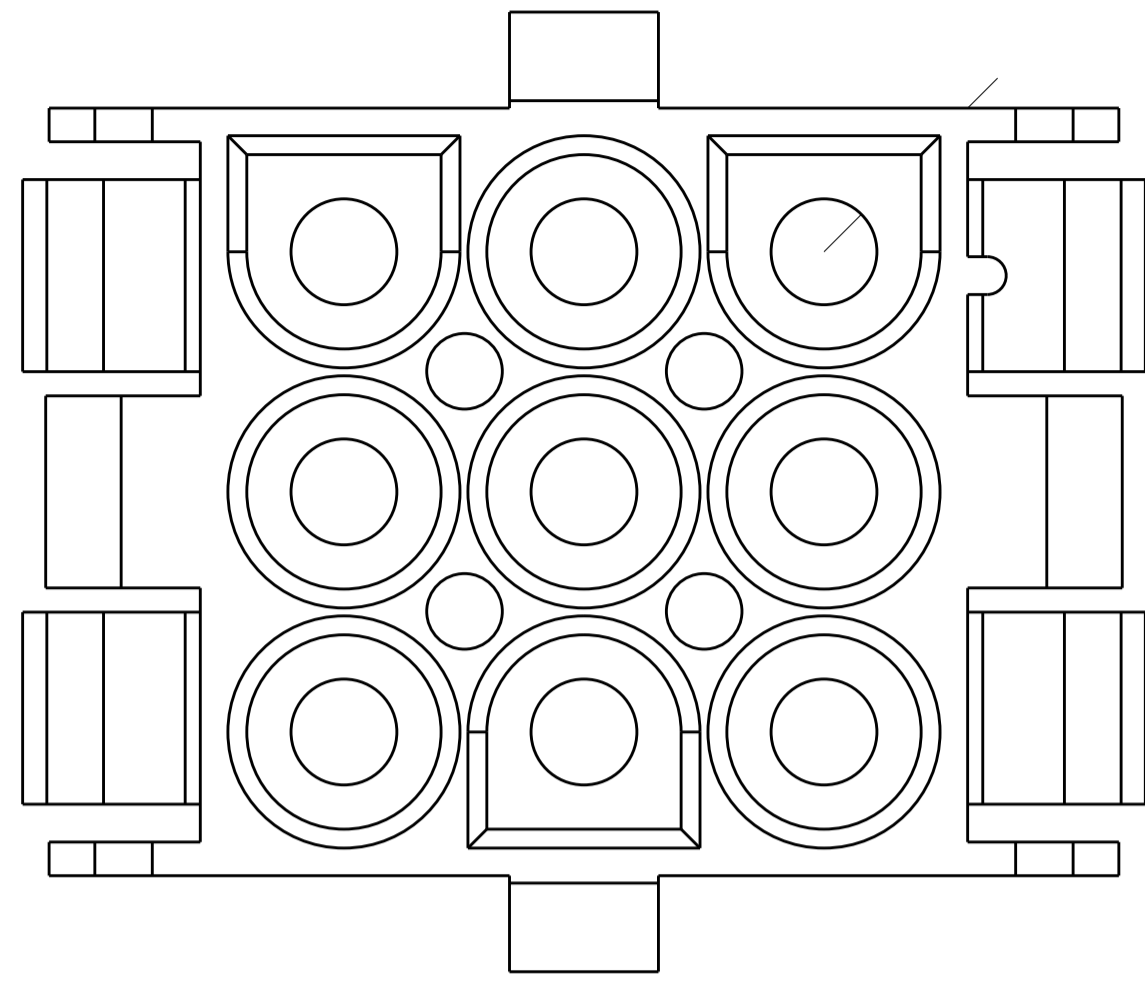
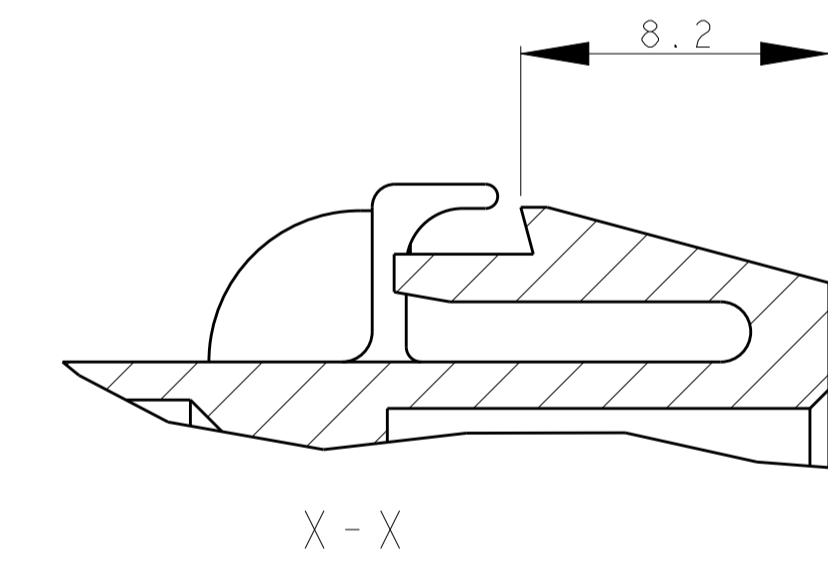
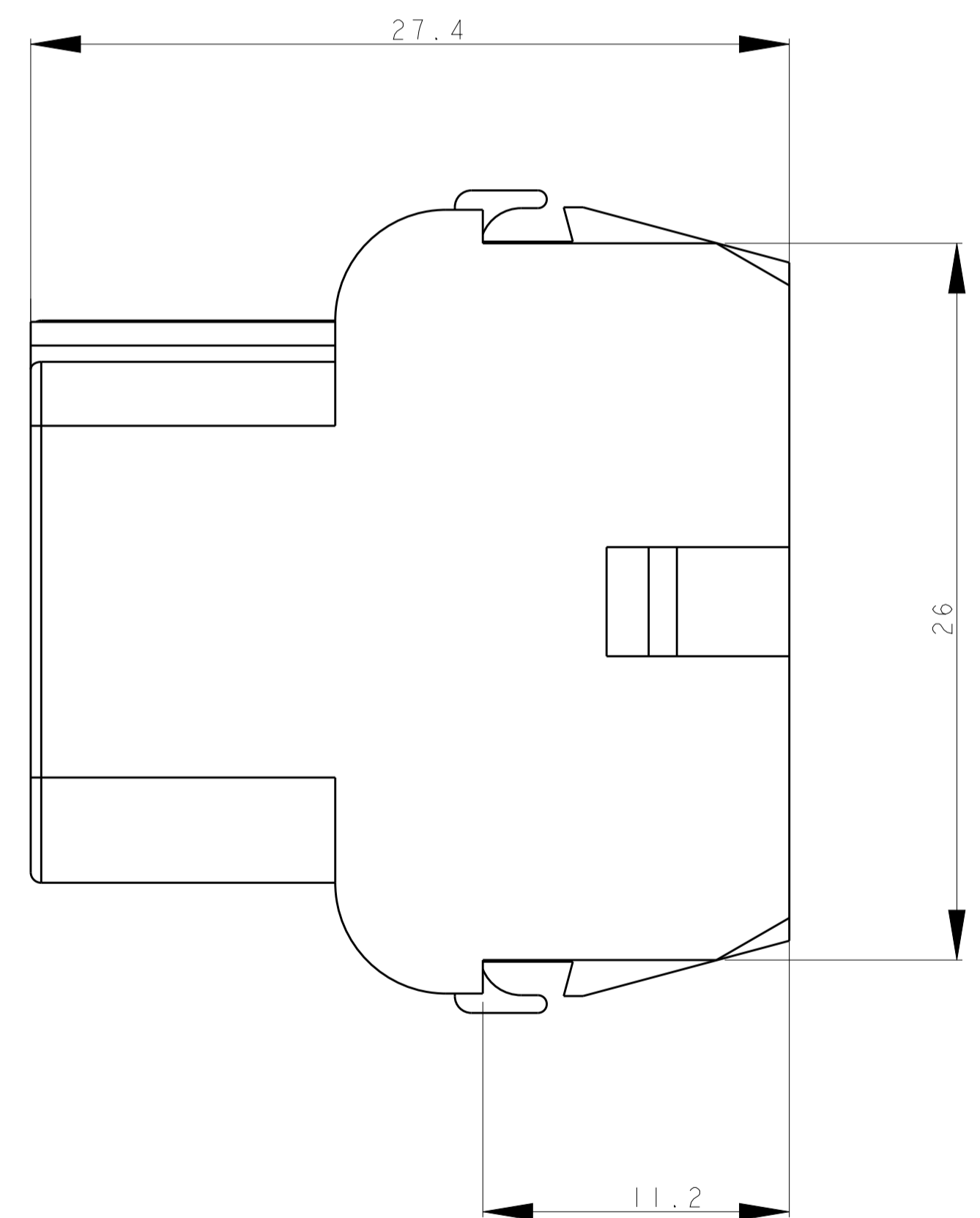
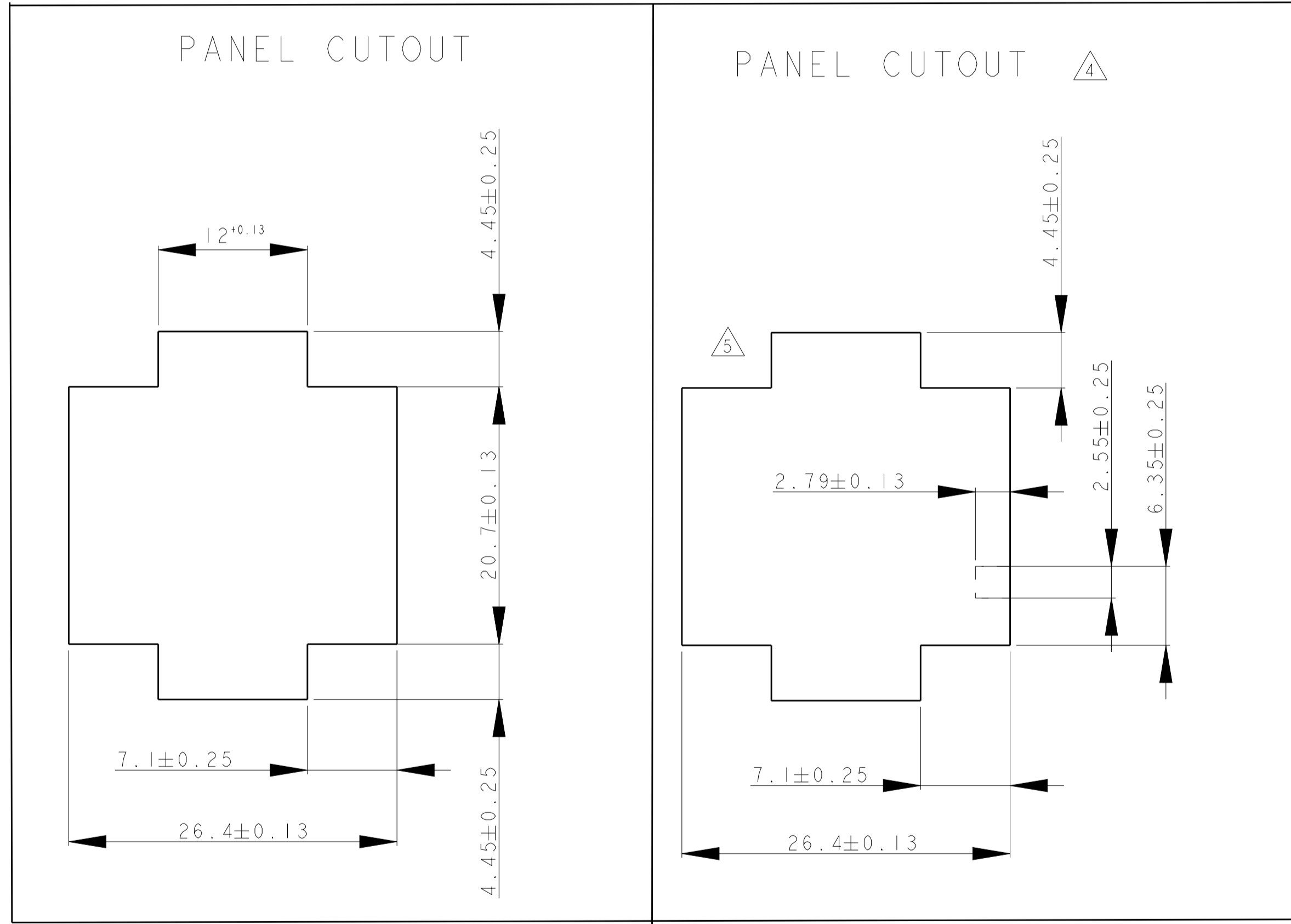


REVISIONS				
P.	LTN	DESCRIPTION	DATE	DWN. APVD.
F6		REVISED PER ECO-17-002663	13MAR2017	CX DZ



PANEL CUTOUT USE FOR PUNCH CUT



- 1 SUITABLE FOR PIN AND FEMALE CONTACTS
- 2 RECOMMENDED SHEET METAL THICKNESS 0,75-2,3mm.
- 3 HOUSING MUST BE INTRODUCED IN PUNCHING DIRECTION.
- 4 FOR CODED USING OF THE HOUSINGS
- 5 POSITION OF CAVITY 1 FOR CODED USING
- 6 NEW MATERIAL (PHOSPOR AND HALOGENEUS FREE).
- 7 GWT 750°C(WITHOUT FLAME) ACCORDING IEC 60335-1 EDITION 06/2001
- 8 MATERIAL WITH GWFI 850°C
- 9 PRELIMINARY PRAT NOT RELEASED FOR PRODUCTION
- 10 ADD PANEL CUTOUT ONLY FOR LASER CUT PROCESS.

927231-7	PA66 UL-94 V0	NATURAL	7
927231-6	PA66 UL-94 V0	NATURAL	9
927231-5	PA66 UL-94 V2	NATURAL	7 8
927231-4	PA66 UL-94 V0	WHITE	
927231-3	PA66 UL-94 V0	NATURAL	6
927231-2	PA66 UL-94 V0	BLACK	
927231-1	PA66 UL-94 V0	NATURAL	
PN	MATERIAL	COLOUR	

THIS DRAWING IS A CONTROLLED DOCUMENT.

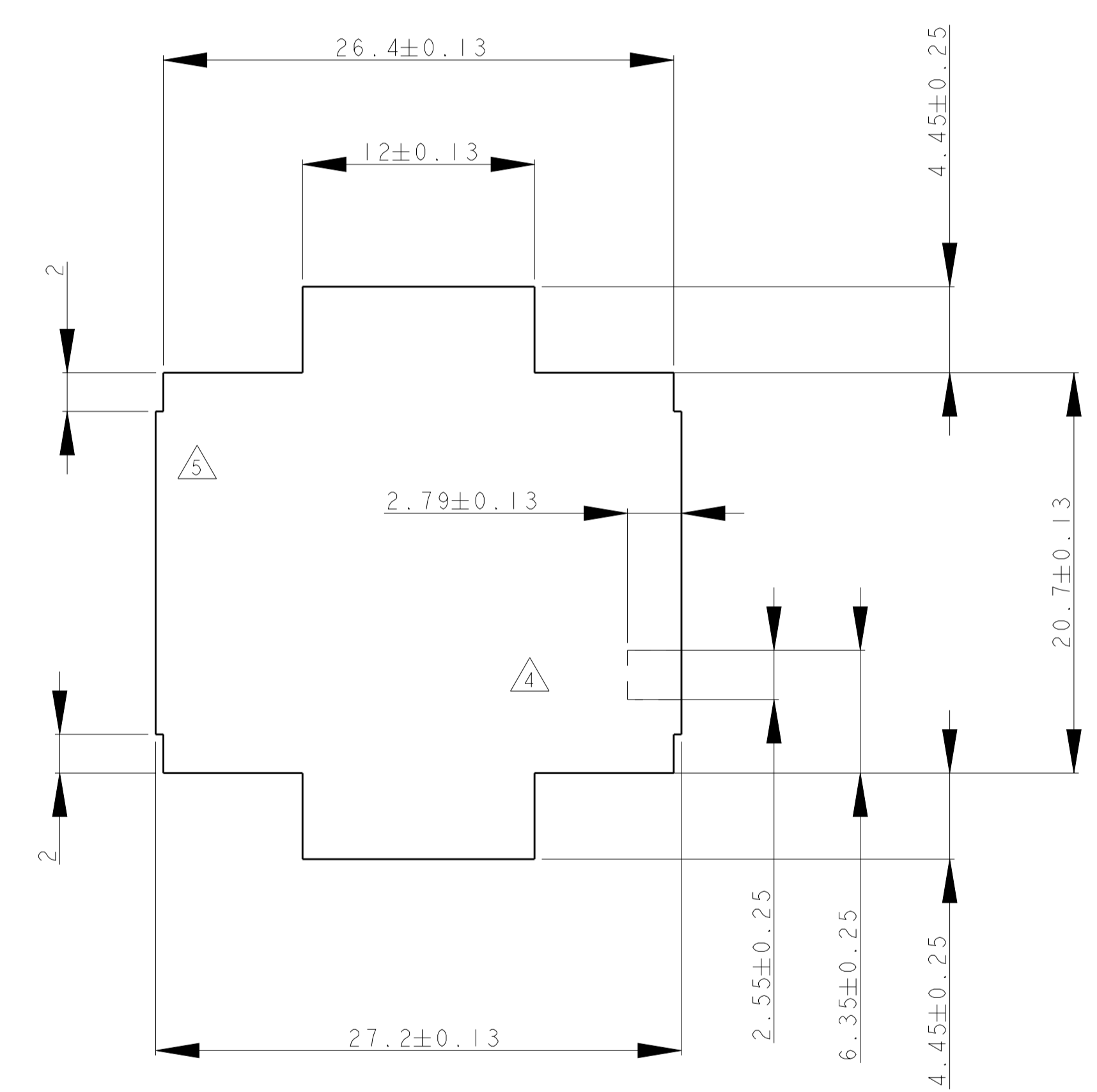
DIMENSIONS:	TOLERANCES UNLESS OTHERWISE SPECIFIED:	DWN. MGT 11DEC2012	CHK. R.P 11DEC2012	APVD. R.P 11DEC2012
mm	0 PLC ± 0.2	PRODUCT SPEC ± 0.13	APPLICATION SPEC	
	1 PLC ± 0.2	SIZE CAGE CODE DRAWING NO	RESTRICTED TO	
	2 PLC ± 0.2	A1		
	3 PLC ± 0.2	SCALE 5:1	SHEET 1 OF 2	REV F6
	4 PLC ±	CUSTOMER DRAWING		
	ANGLES ± 1°			
MATERIAL	FINISH	WEIGHT		

UMNL 9 WAY CAP HSG

STE TE Connectivity

REVISIONS				
REV	DATE	DESCRIPTION	BY	APPV

PANEL CUTOUT ONLY USE FOR LASER CUT \triangle



THIS DRAWING IS A CONTROLLED DOCUMENT.		DWN	11DEC2012		
DIMENSIONS:		CHK	11DEC2012		
TOLERANCES UNLESS OTHERWISE SPECIFIED:		R.P.	11DEC2012		
mm	0 PLC ± 0.2 1 PLC ± 0.2 2 PLC ± 0.2 3 PLC ± 0.2 4 PLC \pm	APVD	11DEC2012	NAME	UMNL 9 WAY CAP HSG
				PRODUCT SPEC	± 0.13
MATERIAL		FINISH		APPLICATION SPEC	-
-		-		SIZE	A1
-		-		WEIGHT	-
-		-		CAGE CODE	927231
-		-		RESTRICTED TO	-
-		-		CUSTOMER DRAWING	SCALE 5:1 SHEET 2 OF 2 REV F6