

# Wide-Band Chokes

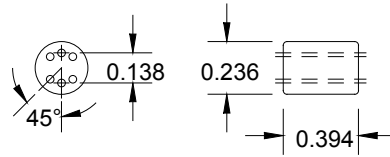
## Special Features

- High impedance
- Excellent EMI suppression capability at wide frequency range
- Low cost
- Differential & common mode configuration

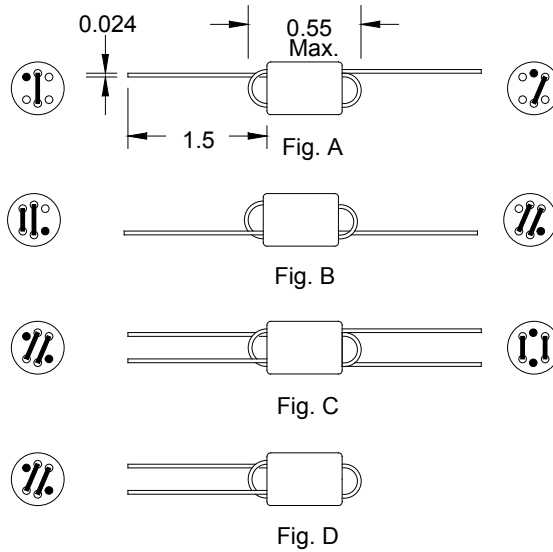
† RoHS Directive 2002/95/EC Jan. 27, 2003 including annex and RoHS Recast 2011/65/EU June 8, 2011.

FB2000 Series				
Part Number	No. of turns	Z (Ω)		Fig.
		±25 % @ 10MHz	±25 % @ 100MHz	
FB20009-3B-RC	1 1/2	250	440	A
FB20019-4B-RC	1 1/2	160	450	A
FB20010-3B-RC	2 1/2	520	780	B
FB20020-4B-RC	2 1/2	30	330	B
FB20011-3B-RC	2 x 1 1/2	265	430	C
FB20021-4B-RC	2 x 1 1/2	160	460	C
FB20022-4B-RC	3	640	900	D

“-RC” suffix indicates RoHS compliance.

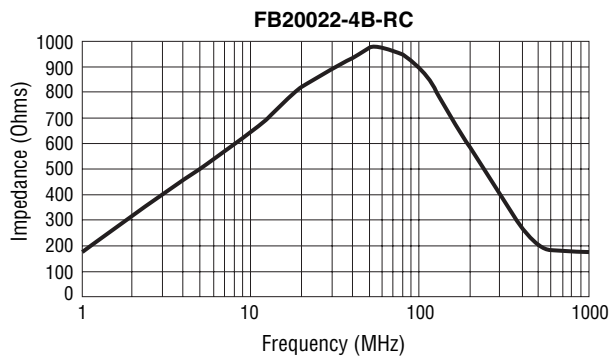
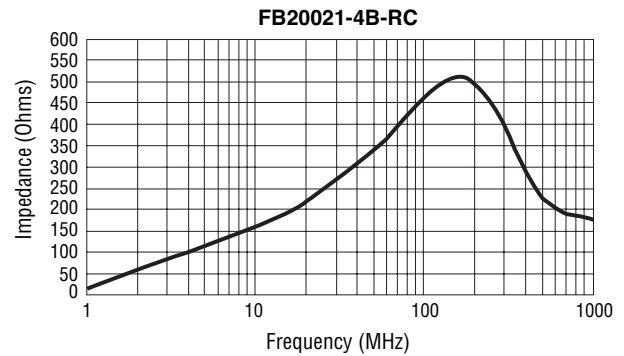
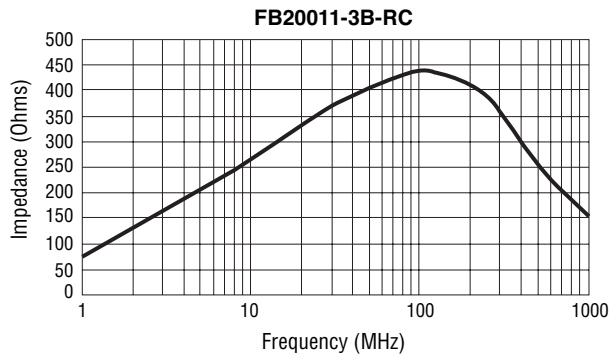
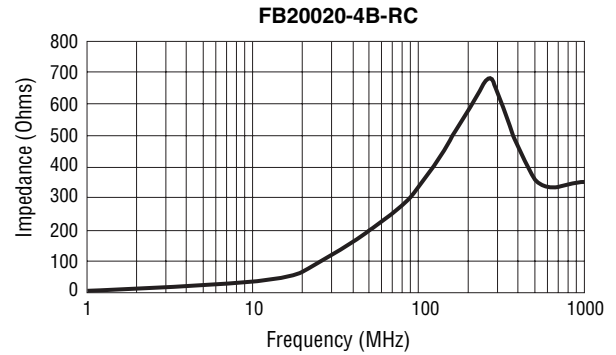
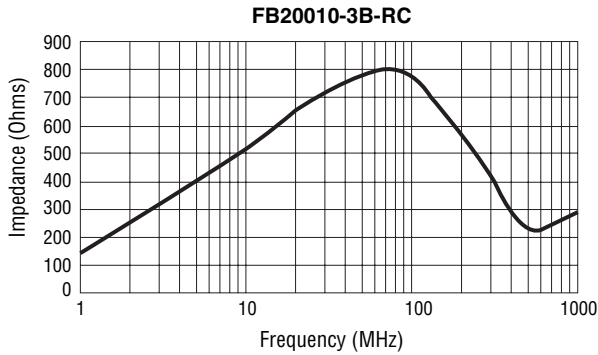
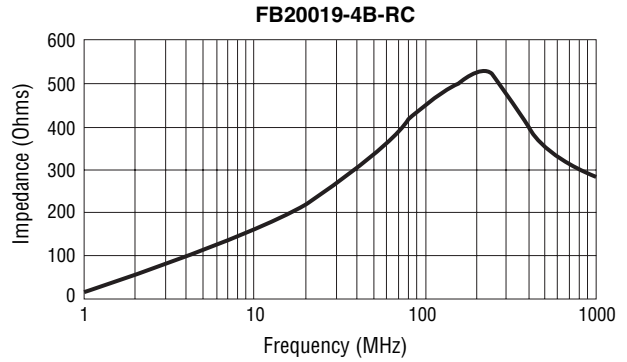
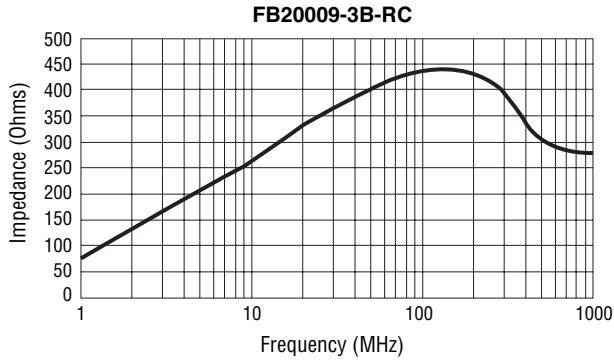


Core Dimension



Dimensions: Inches

# Impedance vs. Frequency - Wide-Band Chokes



**BOURNS®**

Tel. (877) 426-8767 • Fax (951) 781-5006

[www.bourns.com](http://www.bourns.com)