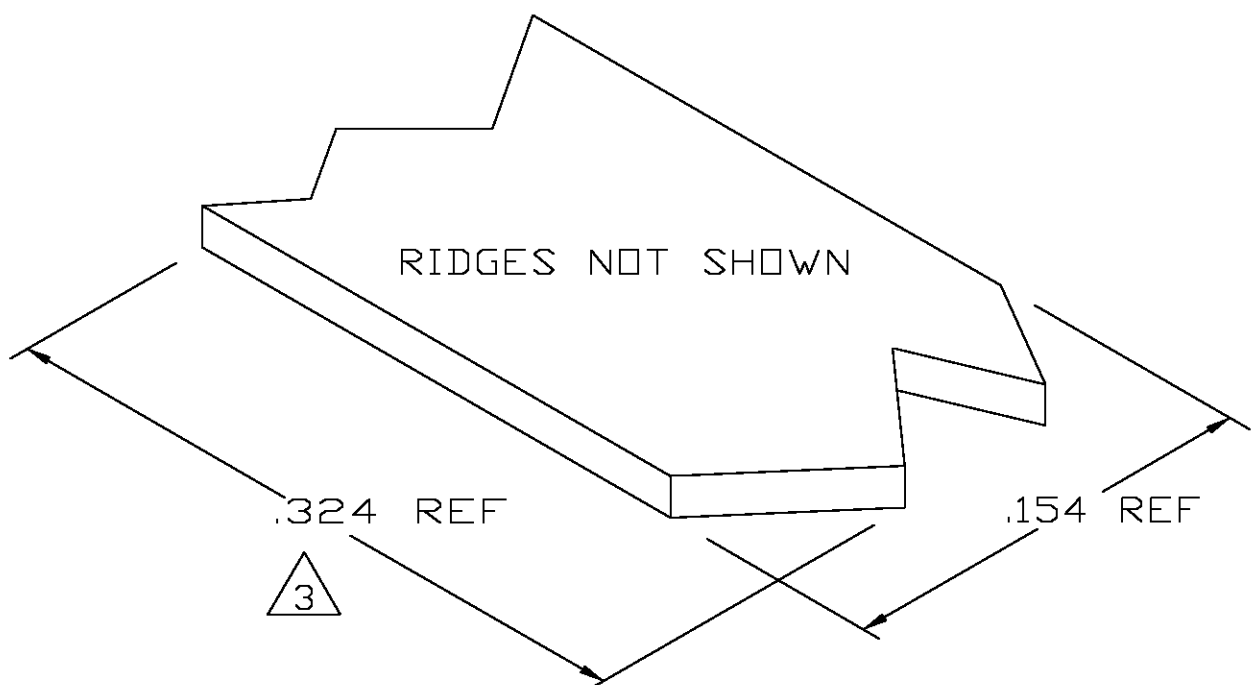
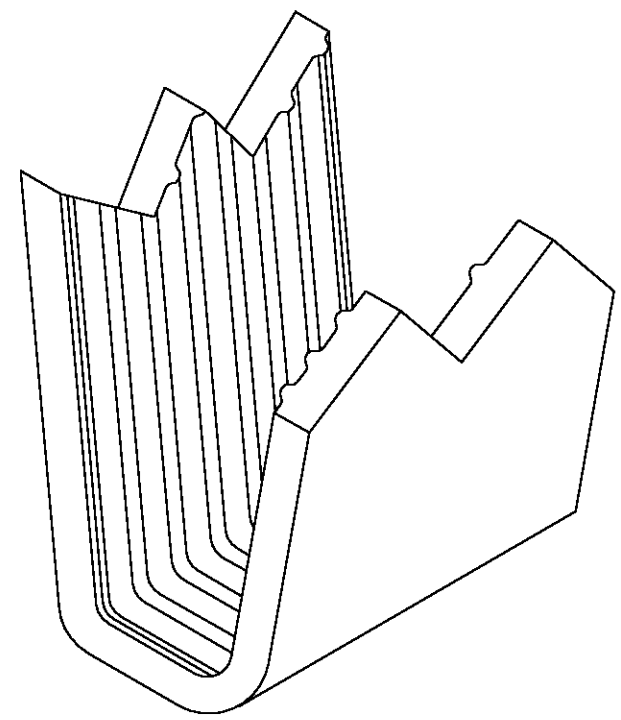
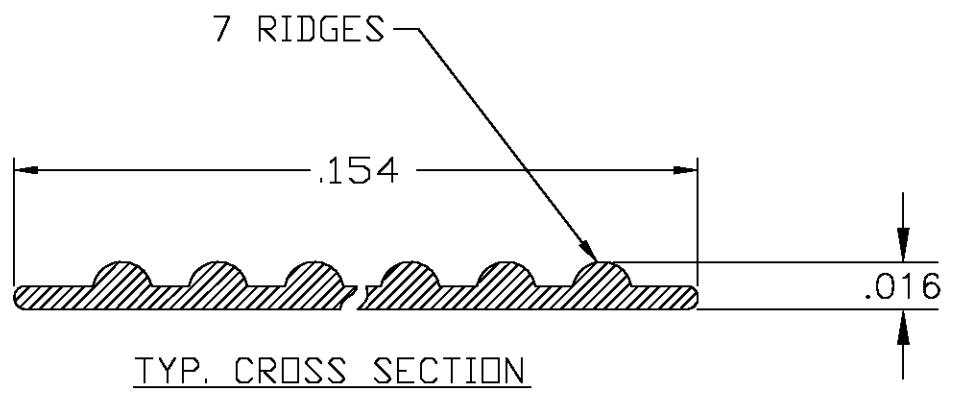


THIS DRAWING IS UNPUBLISHED. RELEASED FOR PUBLICATION
 © COPYRIGHT BY TYCO ELECTRONICS CORPORATION. ALL RIGHTS RESERVED.

LOC	DIST	REVISIONS			
P	LTR	DESCRIPTION	DATE	DWN	APVD
		0	PROPOSED	18DEC03	MF EH



- 1 CRIMPBAND MATERIAL PROVIDED IN CONTINUOUS STRIP.
- 2 REFERENCE DESCRIPTIVE PART NUMBER L061/076D16TB.
- 3 BLANK LENGTH DETERMINED BY 061/076 TOOLSET.
- 4 PRELIMINARY - NOT FOR PRODUCTION.



PARTIAL FORMED VIEW (REF)
FORMED BY APPLICATION TOOLING

4 1601311-1
PART NUMBER

THIS DRAWING IS A CONTROLLED DOCUMENT.		DWN MICHAEL S. FEHER 18DEC2003	Tyco Electronics Corporation Harrisburg, PA 17105-3608	
DIMENSIONS: INCHES	TOLERANCES UNLESS OTHERWISE SPECIFIED:	CHK EDWARD HOWARD 18DEC2003	NAME	
	0 PLC ± -	APVD EDWARD HOWARD 18DEC2003	PRODUCT SPEC	
	1 PLC ± -		APPLICATION SPEC	
	2 PLC ± -		SIZE	
	3 PLC ± .005		CAGE CODE	
	4 PLC ± -		DRAWING NO	
	ANGLES ± -		RESTRICTED TO	
MATERIAL	FINISH	WEIGHT	SCALE	
UNS C26000 BRASS	TIN	-	1:1	
		CUSTOMER DRAWING	SHEET 1 OF 1	
			REV 0	