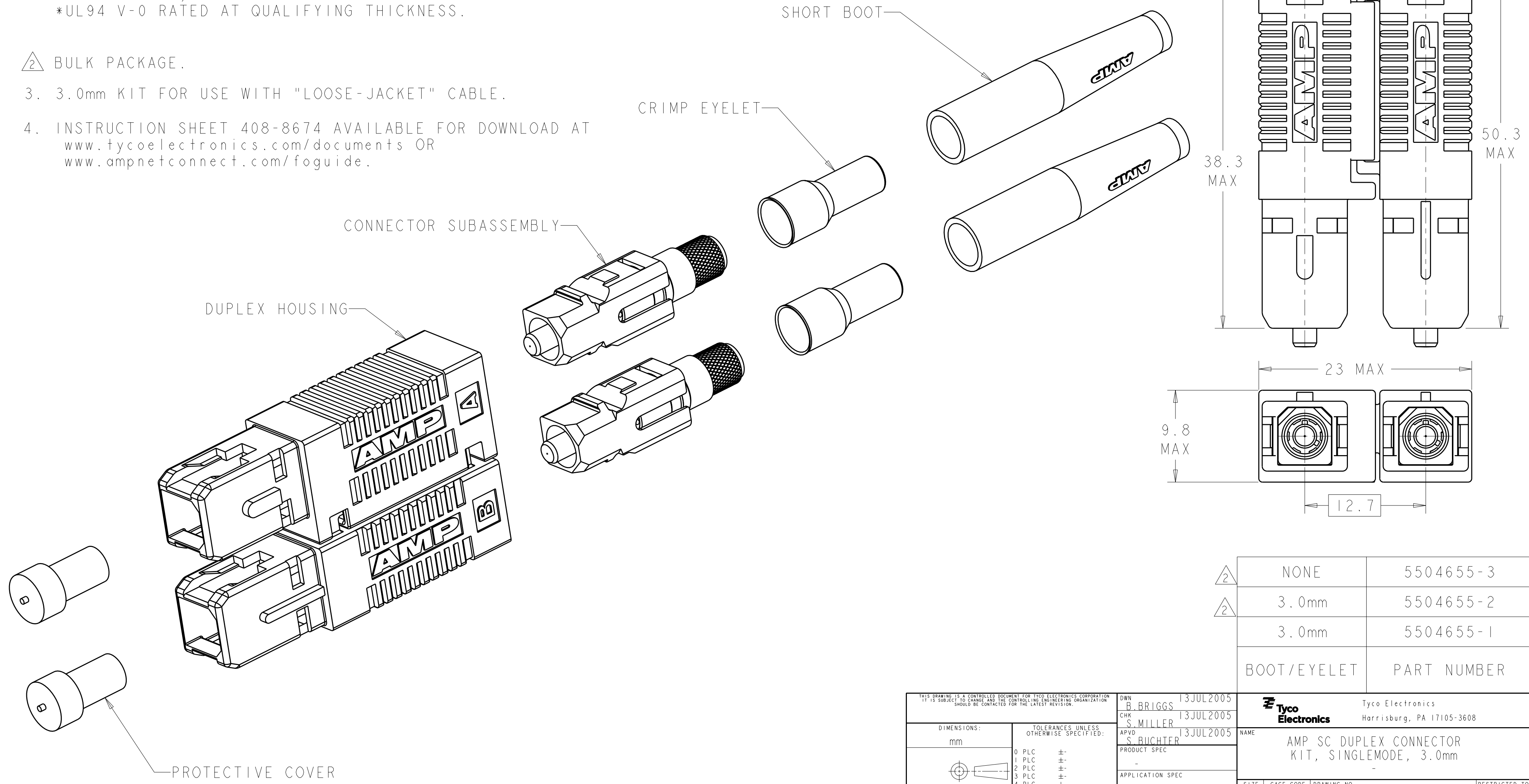


THIS DRAWING IS UNPUBLISHED. RELEASED FOR PUBLICATION 20
 © COPYRIGHT 20 BY TYCO ELECTRONICS CORPORATION. ALL RIGHTS RESERVED.

LOC		DIST		REVISIONS			
P	LTR	DESCRIPTION	DATE	DWN	APVD		
	A	RELEASE TO ACTIVE	07JUN2006	BB	SM		
	AI	ADD NOTE 4.	11MAY2009	KG	SB		

1 MATERIAL:
 PROTECTIVE COVER: LDPE, BLACK, NON-FR.
 CONNECTOR HOUSING: PBT-GF17, COLOR: BLUE.*
 CONNECTOR SUBASSEMBLY:
 PLUG BODY: PES-GF20, COLOR: BEIGE.*
 FERRULE ASSEMBLY: CERAMIC/PBT-GF17, COLOR: BLUE.*
 EPOXY-FILL TUBING: PTFE, COLOR: CLEAR, UL VW-1 RATED.
 SPRING: STAINLESS STEEL.
 RETAINER BODY: PES-GF20, COLOR: BEIGE.*
 CRIMP EYELET: TIN PLATED COPPER.
 BOOT: TPE, COLOR: BLUE.*
 *UL94 V-0 RATED AT QUALIFYING THICKNESS.

2 BULK PACKAGE.
 3. 3.0mm KIT FOR USE WITH "LOOSE-JACKET" CABLE.
 4. INSTRUCTION SHEET 408-8674 AVAILABLE FOR DOWNLOAD AT
www.tycoelectronics.com/documents OR
www.ampnetconnect.com/foguide.



2	NONE	5504655-3
2	3.0mm	5504655-2
	3.0mm	5504655-1
	BOOT/EYELET	PART NUMBER

THIS DRAWING IS A CONTROLLED DOCUMENT FOR TYCO ELECTRONICS CORPORATION. IT IS SUBJECT TO CHANGE AND THE CONTROLLING ENGINEERING ORGANIZATION SHOULD BE CONTACTED FOR THE LATEST REVISION.		DWN B. BRIGGS 13JUL2005	Tyco Electronics Harrisburg, PA 17105-3608
DIMENSIONS:		CHK S. MILLER 13JUL2005	
TOLERANCES UNLESS OTHERWISE SPECIFIED:		APVD S. BUCHTER 13JUL2005	
mm		PRODUCT SPEC	
0 PLC ±		APPLICATION SPEC	NAME AMP SC DUPLEX CONNECTOR KIT, SINGLEMODE, 3.0mm
1 PLC ±		WEIGHT	SIZE A200779
2 PLC ±		CUSTOMER DRAWING	CAGE CODE C-5504655
3 PLC ±		SCALE 3:1	DRAWING NO 5504655
4 PLC ±		SHEET 1	RESTRICTED TO -
ANGLES ±		OF 1	REV A1
FINISH			