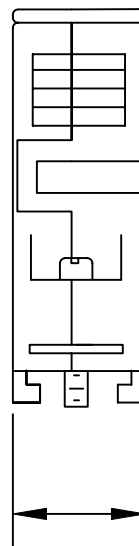
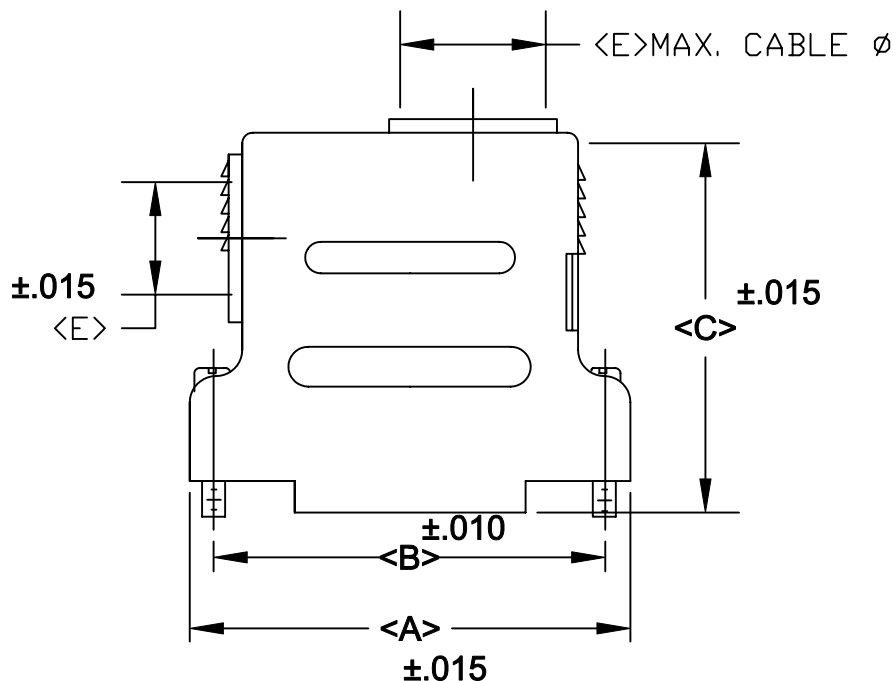


**BACKSHELL KIT INCLUDES:**

- (2) BACKSHELL HALVES
- (2) 4-40 MATING SCREWS
- (2) STRAIN RELIEF CLAMPS
- (2) STRAIN RELIEF SCREWS
- (1) CABLE SLOT SHUT-OFF
- (3) HOUSING SCREWS

982-YYY-YYYRYY1

SERIES \_\_\_\_\_  
 POSITIONS \_\_\_\_\_  
 009  
 015  
 025  
 037  
 050  
 MATERIAL \_\_\_\_\_  
 010 = PLASTIC  
 020 = METALIZED PLASTIC  
 COLOR: \_\_\_\_\_  
 03 = GREY  
 12 = NICKEL OVER COPPER  
 PUT-UPS \_\_\_\_\_  
 1 = KIT



**NOTE: 9 POSITION DOES NOT HAVE 90 DEGREE ENTRY AND HAS ONLY (1) STRAIN RELIEF CLAMP.**

POS.	A	B	C	D	E
9	1.230	.984	1.380	.630	.350
	31.24	24.99	35.05	16.00	8.89
15	1.560	1.312	1.610	.630	.374
	39.62	33.32	40.89	16.00	9.50
25	2.100	1.852	1.810	.630	.444
	53.34	47.04	45.97	16.00	11.18
37	2.740	2.500	1.810	.630	.444
	69.60	63.50	45.97	16.00	11.18
50	2.650	2.406	1.810	.735	.543
	67.31	61.00	45.97	18.67	13.79

**MATERIALS: THERMOPLASTIC  
 U.L.94V-0 (GREY)  
 OPERATING TEMP: -55° TO 140° C  
 METALIZED PLASTIC: NICKEL OVER COPPER**

**RoHS COMPLAINT**



THESE DRAWINGS AND SPECIFICATIONS ARE THE PROPERTY OF NorComp AND SHALL NOT BE REPRODUCED, COPIED OR USED AS THE BASIS FOR THE MANUFACTURE OR SALE OF APPARATUS WITHOUT WRITTEN PERMISSION.

DRAWN: **PAM JENKINS**

DATE: **3-8-06**

CHECKED:

DATE:

**NorComp**

SCALE \_\_\_\_\_ SHEET **1** OF **1** REV **3**

DWG NO. **982-YYY-0Y0RYY1**