

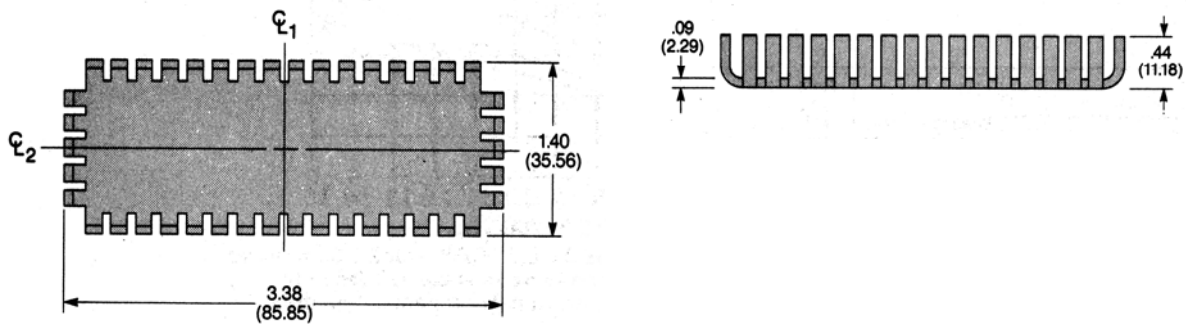
### METAL CASE, CASE-MOUNTED SEMICONDUCTORS

UP10 Series for TO-3 Dual Mount Applications

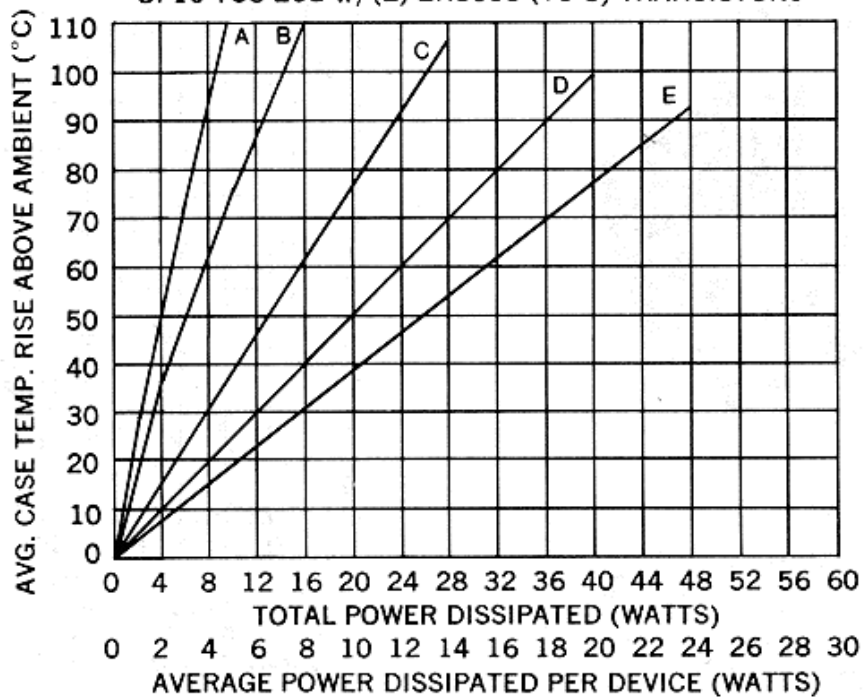
Natural Conv. (°C/W): 7.7

Forced Air (°C/W): 2

Mounting Envelope: 3.38" x 1.40" x .44"



UP10-TO3-2CB w/(2) 2N3055 (TO-3) TRANSISTORS

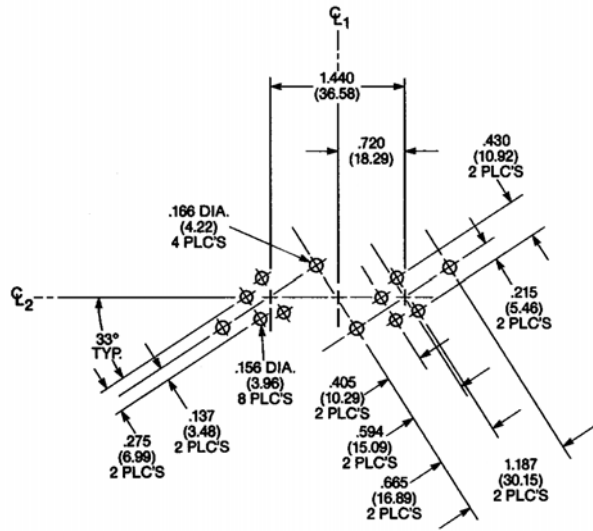


#### DESCRIPTION OF CURVES

- A. N.C. Horiz. Device Only Mounted to G-10.
- B. N.C Horiz. & Vert. With Dissipator.
- C. 200 FPM w/Diss.
- D. 500 FPM w/Diss.
- E. 1000 FPM w/Diss.

- Thermal Resistance Case to Sink is 0.1-0.3 °C/W w/Joint Compound.
- Derate 0.8 °C/watt per device for unplated part in natural convection only.





**CTS IERC, Heat Sinks and Thermal Management Solutions**

413 North Moss Street, Burbank, California 91502 Tel: (818) 842-7277 Fax: (818) 848-8872

Rev. 08-29-03