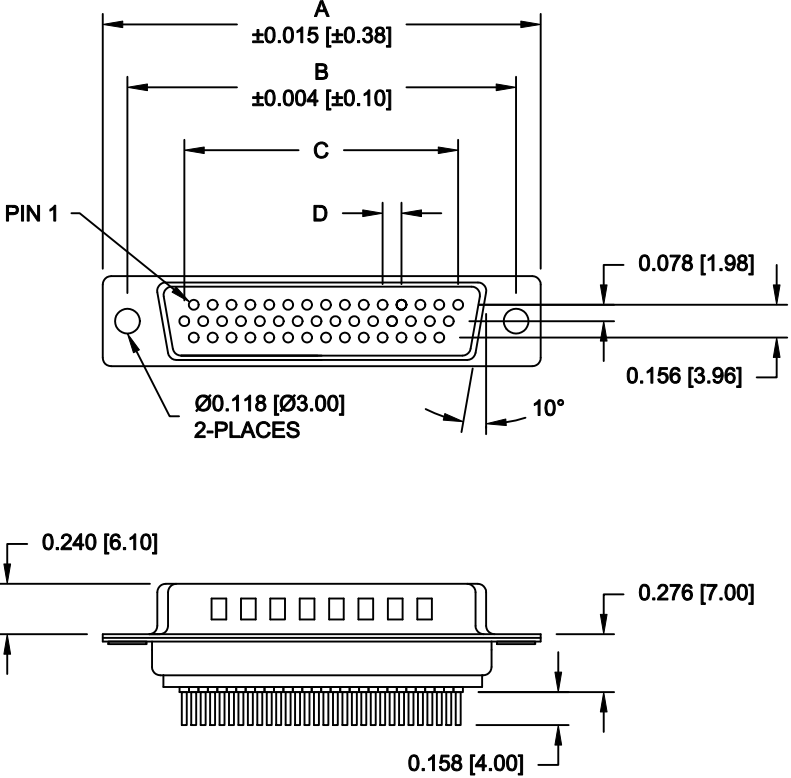


DESCRIPTION: IP66 - HIGH DENSITY MALE - VERTICAL DIP - LOW PROFILE - STAMPED

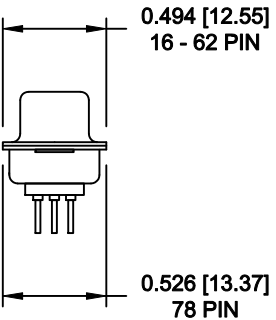
44 PIN SHOWN



| No. OF PINS | DIMENSIONS | | | |
|-------------|------------|-------|-------|-------|
| | A | B | C | D |
| 15 | 1.214 | 0.984 | 0.405 | 0.090 |
| | 30.80 | 24.99 | 10.29 | 2.29 |
| 26 | 1.545 | 1.312 | 0.765 | 0.090 |
| | 39.24 | 33.32 | 19.43 | 2.29 |
| 44 | 2.088 | 1.852 | 1.305 | 0.090 |
| | 53.04 | 47.04 | 33.15 | 2.29 |

695-YYY-1 1 3 L YY 1

SERIES _____
 POSITIONS _____
 015 _____
 026 _____
 044 _____
 GENDER _____
 1 = MALE _____
 TERMINATION _____
 1 = PC MOUNT _____
 SHELL PLATING _____
 3 = NICKEL (GROUND INDENTS) _____
 RoHS COMPLIANT _____
 LOW PROCESS TEMP. - 230°C _____
 HARDWARE OPTIONS _____
 00 = NO HARDWARE _____
 03 = 4-40 HEX STANDOFFS _____
 55 = 4-40 INSERTS _____
 PLATING OPTIONS _____
 1 = GOLD FLASH _____



MEETS IP66 STANDARDS
 (SEE PAGE 3 FOR SEALING DETAILS)

MATERIAL:

- SHELL: STEEL, NICKEL PLATED
- INSULATOR: PBT, UL 94V-O RATED, 230°C PROCESS TEMP CHEMICAL RESISTANCE, BLACK
- CONTACT: BRASS, GOLD FLASH IN MATING AREA TIN PLATING ON TAIL ENDS
- SEALING MATERIAL: F08 FLEXIBLE MATERIAL

ELECTRICAL:

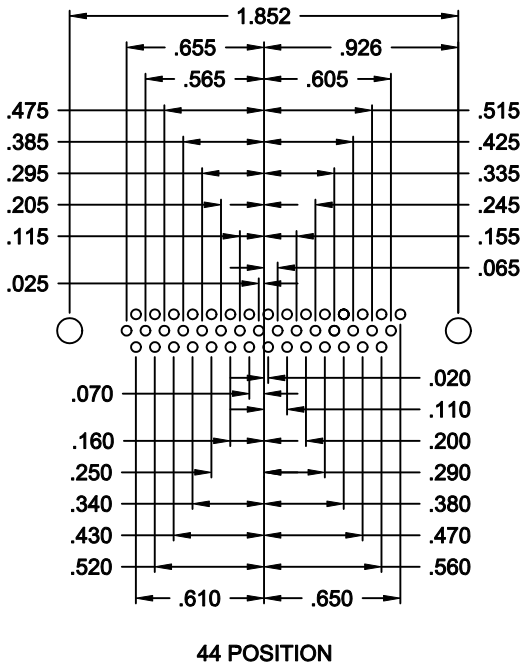
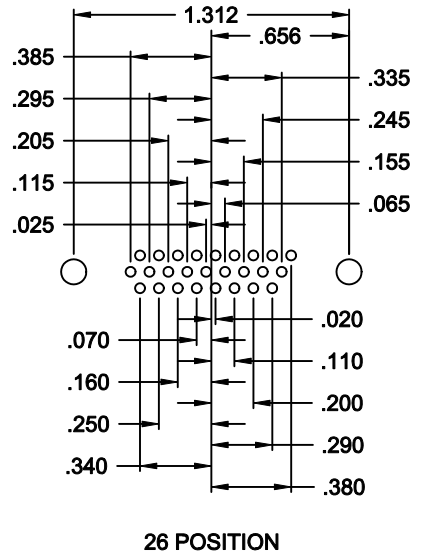
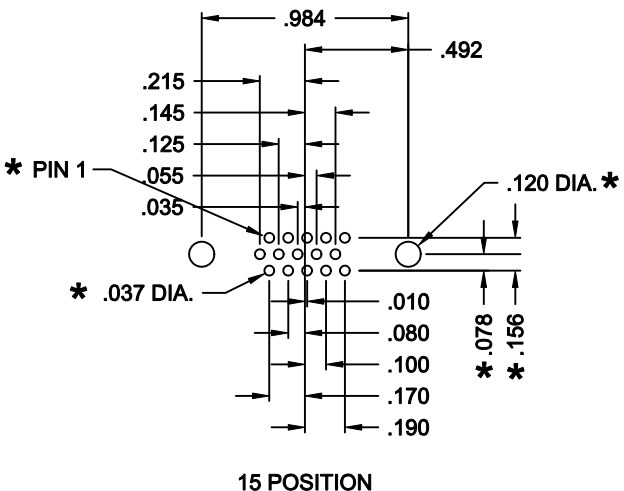
- CURRENT RATING: 2 AMPS
- WITHSTANDING VOLTAGE: 1,000VAC AT SEA LEVEL
- CONTACT RESISTANCE: 10 mOhms Max.
- INSULATION RESISTANCE: 5,000 MOhms min.
- VOLTAGE: 500VAC FOR 1 MINUTE
- TEMPERATURE: -55° C TO +125° C

DO NOT SCALE FROM DRAWING

RoHS COMPLIANT

| | | | | |
|----------------|---|--------------------------------|----------------------------------|--------------------------|
| | THESE DRAWINGS AND SPECIFICATIONS ARE THE PROPERTY OF NorComp AND SHALL NOT BE REPRODUCED, COPIED OR USED AS THE BASIS FOR THE MANUFACTURE OF SALE OF APPARATUS WITHOUT WRITTEN PERMISSION. | | DRAWN: M. SIGMON | DATE: 02-24-12 |
| | | | CHECKED: | DATE: |
| NorComp | | SCALE: 1 : 1 | SHEET 1 OF 3 | REV 0 |
| | | DWG NO. 695-YYY-113LYY1 | | |

DESCRIPTION: PCB LAYOUT - H.D. VERTICAL - MALE



HIGH DENSITY
VERTICAL

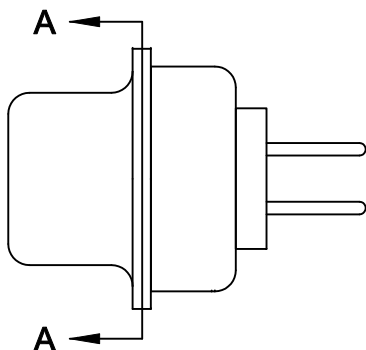
* TYP. ON ALL SIZES

DO NOT SCALE FROM DRAWING

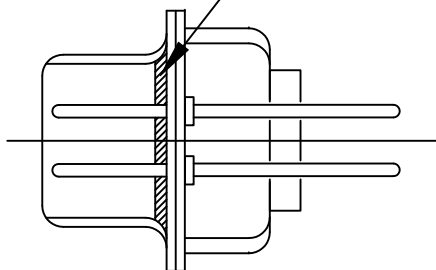
| | | | | |
|----------------|---|--------------------------------|----------------------------|--------------------------|
| | THESE DRAWINGS AND SPECIFICATIONS ARE THE PROPERTY OF NorComp AND SHALL NOT BE REPRODUCED, COPIED OR USED AS THE BASIS FOR THE MANUFACTURE OF SALE OF APPARATUS WITHOUT WRITTEN PERMISSION. | | DRAWN: M. SIGMON | DATE: 02-24-12 |
| | | | CHECKED: | DATE: |
| NorComp | | SCALE: FULL | SHEET 2 OF 3 | REV 0 |
| | | DWG NO. 695-YYY-113LYY1 | | |

DESCRIPTION: SEALING PROCESS & HARDWARE

SEALING PROCESS



FRONT SEAL APPLIED OVER INSULATOR AND BETWEEN FRONT & REAR SHELLS



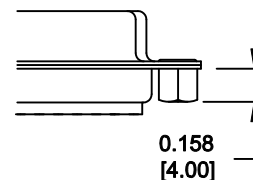
DETAIL A-A

TOLERANCE:
ALL DIMENSIONS ARE ±0.010

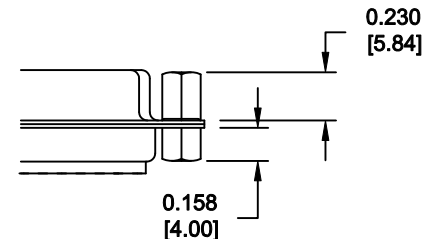
HARDWARE OPTIONS

ALL CLINCH-NUTS ARE 4-40 INTERNAL THREADS

55X 0.158" (BOARD SIDE)



03X 0.158" (BOARD SIDE) - 0.230" MATING SIDE



DO NOT SCALE FROM DRAWING



THESE DRAWINGS AND SPECIFICATIONS ARE THE PROPERTY OF NorComp AND SHALL NOT BE REPRODUCED, COPIED OR USED AS THE BASIS FOR THE MANUFACTURE OF SALE OF APPARATUS WITHOUT WRITTEN PERMISSION.

| | | | |
|-------------------------|----------------------------|------------------------|--|
| DRAWN: M. SIGMON | | DATE: 02-24-12 | |
| CHECKED: | | DATE: | |
| SCALE: | SHEET 3 OF 3 | REV 0 | |
| DWG NO. | | 695-YYY-113LYY1 | |

NorComp

RoHS COMPLIANT