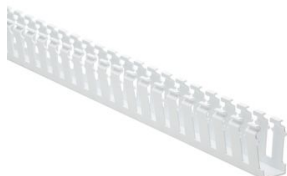


Specification Sheet

Part Number: 181-12013



Slotted-Wall Wiring Duct, 1" x 2", Adhesive, PVC, White, 120 ft/carton

Article Number	181-12013
Type	SLA1X2
Color	White (WH)
Features & Benefits	<ul style="list-style-type: none">• Strong fingers prevent unwanted breaking.• Fingers are easily deflected outward, allowing ready positioning of the wires within the slotted wall duct.• Restricted opening prevents unintended removal of wires and permits any individual wire to be traced without disconnection.
Quantity Per	carton
Product Description	Pro-Duct slotted wall wiring duct features break-away fingers which provide additional access for wire leads. Each section of the duct is provided with two score lines. The upper score line is used to break away fingers when a wider opening is required. The lower score line allows the sidewall to be smoothly cut for joints and "T's".
Short Description	Slotted-Wall Wiring Duct, 1" x 2", Adhesive, PVC, White, 120 ft/carton

Global Part Name

SLA1X2-PVC-WH

Technical Description

Adhesive

Length L (Imperial)

6.0

Length L (Metric)

1.83

Width W (Imperial)

1.0

Width W (Metric)

25.4

Height H (Imperial)

2.07

Height H (Metric)

52.60

Mounting Hole Centers (Imperial)

4.0

Material

Polyvinylchloride (PVC)

Material Shortcut

PVC

Flammability

Self-Extinguishing

Halogen free

No

Operating Temperature (Metric)

+122°F (+50°C)

Reach Complaint(Article 33)

No

ROHS Complaint	Yes
Certification/Specification WEB	EN 50085-2-3_1A EN 50085-1:2005 + A1:2013 UL CSA
UL Recognized (US)	Yes
Package Quantity(Imperial)	120
Package Quantity (Metric)	36.58
Customs Number	3925900000