



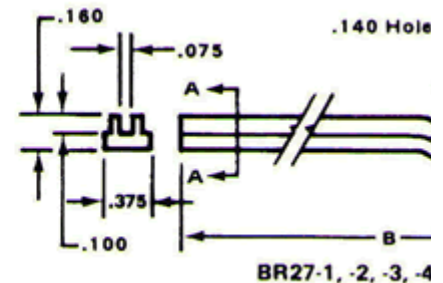
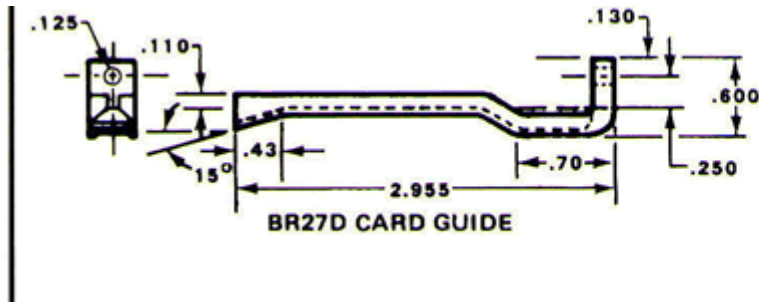
VME  
VME64X  
CompactPCI®

## Vector Part No.: " BR27-1 "

### Free standing connector mounted card guide

Part No.	Use with Connector	A	B	C	D	Application
<a href="#">BR27D</a>	R644	0.60"	2.96"	0.47"	0.25"	4.5" Wide Plugboards with Cen Vector Plugbord Series 3677,
<a href="#">BR27-1</a>	R644, R644-1, R644-3	0.49"	3.08"	0.35"	0.13"	4.25" wide Plugboards with cer
<a href="#">BR27-3</a>	R630	0.49"	3.01"	0.36"	0.10"	2.73" Wide Plugboards with Ce Vector Plugbord Series 3796 ;
<a href="#">BR27-5</a>	R656-1	0.55"	3.00"	0.42"	0.22"	4.48" Wide Plugboards with Ce Vector Plugbord Series 4610-

#### Dimensions and Drawing Examples



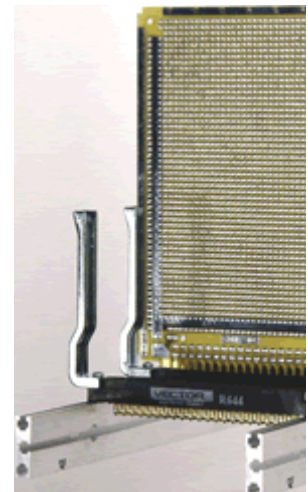
#### Description

Secure connection  
Rugged support of 0.062" thick  
Free standing circuit boards  
For application in which space is premium  
Several size and styles available  
Aluminium alloy construction  
Mounting hardware included { HD55 Hardware Kit }  
TS169 " T-Strut " mounting rail available

#### BR27D

#### Typical Mounting with

Vector 3662-9 Plugbord, R644 Connector & TS169 T-Strut



Circbord®, Vectorbord® and VectorPak® are registered trademarks of Vector Electronics & Technology, Inc.  
CompactPCI® is a registered trademark of PCIMG. © 2001 Vector Electronics & Technology, Inc. - All Rights Rese

[webmaster@vectorelect.com](mailto:webmaster@vectorelect.com)