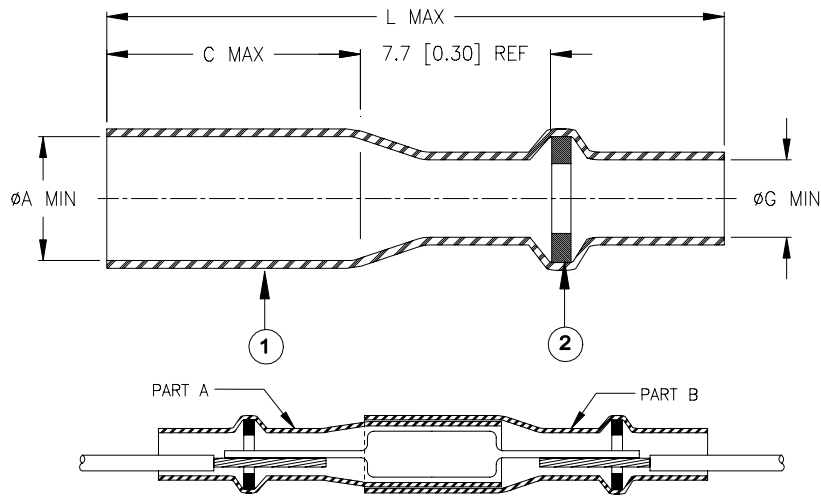


SPECIFICATION CONTROL DRAWING



Product Revision		Product Dimensions			Wire Dimensions			Component Information				Qty: Item 2	
Product Name		øA min	C max	L max	øD min	øD max øG min	AWG	LC		DC			
Kit	Sub-assemblies							min	max	min	max		
B-155-2001	B-155-2001-A	A	2.2 [0.085]	5.5 [0.215]	22.0 [0.865]	1.1 [0.045]	1.5 [0.060]	22/24	6.5 [0.255]	8.0 [0.315]	1.8 [0.070]	2.2 [0.085]	1
	B-155-2001-B	A	2.9 [0.114]										1
B-155-2002	B-155-2002-A	A	3.2 [0.125]	7.5 [0.295]	27.0 [1.060]	1.1 [0.045]	2.3 [0.090]	20/24	9.0 [0.355]	11.0 [0.435]	2.5 [0.100]	3.2 [0.125]	2
	B-155-2002-B	A	3.7 [0.145]										2
B-155-2003	B-155-2003-A	A	3.7 [0.145]	9.5 [0.375]	27.0 [1.060]	1.8 [0.070]	2.8 [0.110]	18/20	10.5 [0.415]	15.0 [0.590]	3.0 [0.120]	3.7 [0.145]	1
	B-155-2003-B	A	4.4 [0.175]										1

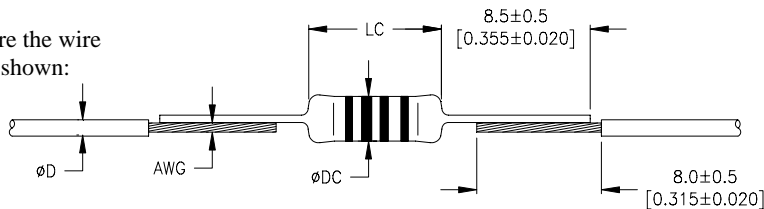
MATERIALS

- INSULATION SLEEVE: Heat-shrinkable, transparent clear, radiation cross-linked polyolefin.
- SOLDER PREFORM WITH FLUX: Qty: see table (one solder washer shown).
 SOLDER: TYPE Sn42Bi58 per ANSI / J-STD-006.
 FLUX: TYPE ROM1 per ANSI / J-STD-004.

APPLICATION

- These parts are designed to provide an inline termination of a component, rated for +105°C minimum, and meeting the dimensional criteria listed.
- Temperature range: -55°C to +125°C.
- For installation procedure and application equipment, consult Tyco Electronics / Raychem RPIP 824-00.

For best results, prepare the wire and the component as shown:



		Tyco Electronics Corporation 300 Constitution Drive, Menlo Park, CA. 94025, U.S.A.				TITLE: SOLDERSLEEVE DEVICE IN-LINE COMPONENT TERMINATION RoHS COMPLIANT	
Unless otherwise specified dimensions are in millimeters. [Inches dimensions are shown in brackets]				DOCUMENT NO.: B-155-200X			
TOLERANCES: 0.00 N/A 0.0 N/A 0 N/A		ANGLES: N/A ROUGHNESS IN MICRON		Tyco Electronics reserves the right to amend this drawing at any time. Users should evaluate the suitability of the product for their application.			
PROD. REV.: SEE TABLE		DOC. ISSUE: 1		DATE: 11-Aug-05		PREPARED BY: mforonda	
DCR NUMBER: D050296		REPLACES: ---		CAGE CODE: 06090		SCALE: ---	
SIZE: A		SHEET: 1 of 1		© 2005 Tyco Electronics Corporation. All rights reserved. If this document is printed it becomes uncontrolled. Check for the latest revision.			