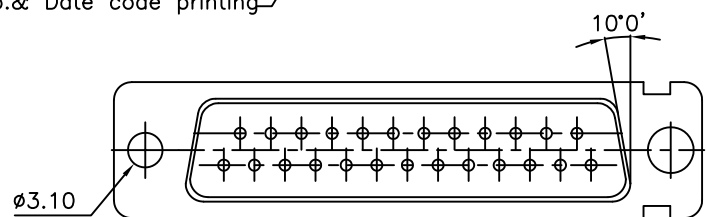
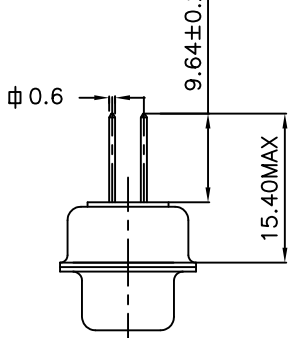
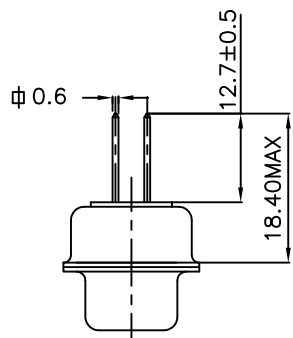
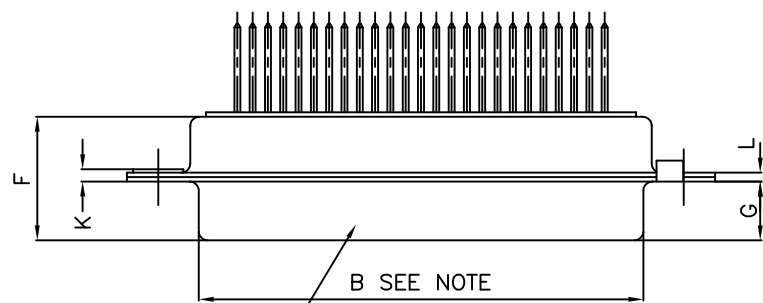
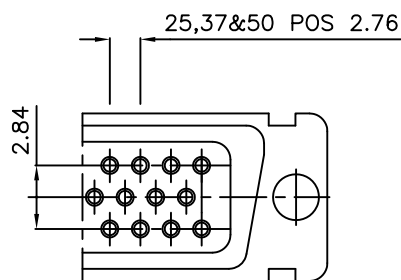
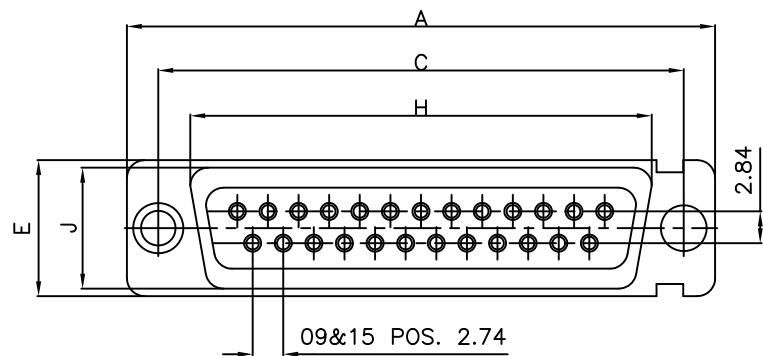


STD MOUNTING

FLOAT MOUNTING

LAYOUT OF 50 POS.CONNECTOR



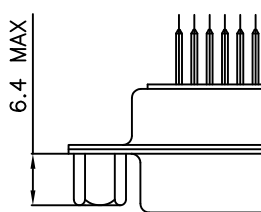
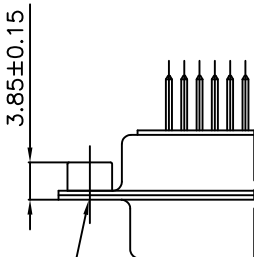
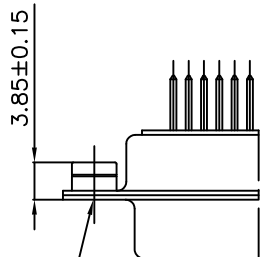
Part No.& Date code printing

VIEW OF MATING FACE

M3 RIVETTING NUT

UNC 4-40 RIVETTING NUT

HEXAGONAL FEMALE SCREW- LOCK UNC 4-40



OPTION:- L

OPTION:- O

OPTION:- V

50	P	66.65	52.68	61.11	11.08	14.99	11.09	5.85	55.07	13.31	1.50	1.0
	S	66.65	52.30	61.11	10.62	14.99	11.21	6.05	55.07	13.31	1.10	0.8
37	P	68.94	55.30	63.50	8.23	12.17	11.09	5.85	57.45	10.46	1.50	1.0
	S	68.94	54.71	63.50	7.77	12.17	11.21	6.05	57.45	10.46	1.10	0.8
25	P	52.65	38.84	47.04	8.23	12.17	11.07	5.85	41.02	10.46	1.10	0.8
	S	52.65	38.25	47.04	7.77	12.17	11.21	6.05	41.02	10.46	1.10	0.8
15	P	38.76	25.12	33.32	8.23	12.17	10.99	5.85	27.25	10.46	1.10	0.8
	S	38.76	24.54	33.32	7.77	12.17	11.21	6.05	27.25	10.46	1.10	0.8
09	P	30.43	16.79	24.99	8.23	12.17	10.99	5.85	19.02	10.46	1.10	0.8
	S	30.43	16.21	24.99	7.77	12.17	11.21	6.05	19.02	10.46	1.10	0.8
SHELL SIZE		A-0	B-0	C ±0.12	D-0	E-0	F MAX	G-0	H-0	J-0	K±0.20	L-0
		+0.76	+0.25	±0.12	+0.25	+0.76	F MAX	+0.15	+0.51	+0.51	K±0.20	+0.22

NOTE:-INSIDE DIMENSIONS OF MALE AND OUTSIDE DIMENSIONS OF THE FEMALE CONNECTOR.

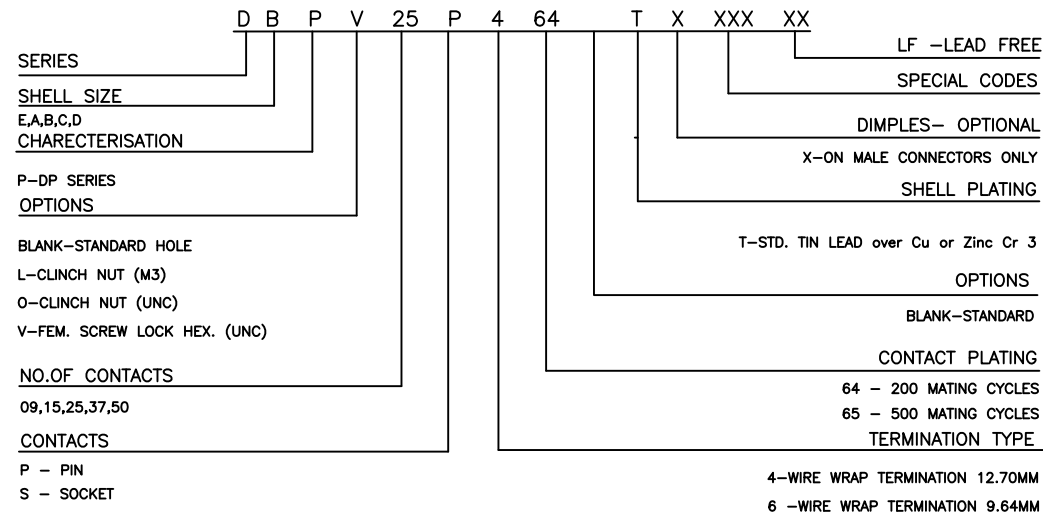
TECHNICAL SPECIFICATIONS

- SHELLS : TIN/ZINC PLATED
- INSULATOR MATERIAL : SELF EXTINGUISHING BLACK POLYESTER UL CLASS 94V0
- THE HOUSING WILL WITHSTAND EXPOSURE TO 260-265°C
- IF WE USE PROTECTIVE ADHESIVE (type Kapton or Teflon)
- OR PROTECTIVE METALLIC DEVICE
- CONTACTS DIA ON ACTIVE AREA : 1 MM.
- CONTACTS MATERIAL : COPPER ALLOY
- CONTACT PLATING : GOLD OVER NICKEL
- OPERATING TEMPERATURE : -55°C +125°C
- OPERATING CURRENT : 7.5 A PER CONTACT
- CONTACT RESISTANCE : <7.3 mΩ
- INSULATION RESISTANCE : ≥5000 MΩ
- MAXIMUM VOLTAGE : 1000 V.r.m.s
- MECHANICAL ENDURANCE : 500 MATINGS FOR CODE 65
- 200 MATINGS FOR CODE 64
- DAMP HEAT : 56 DAYS FOR CODE 65
- 21 DAYS FOR CODE 64

LEAD FREE NOTE

"This LF product meets European Union Directives and other country regulations as described in GS-22-008" Packaging as per GS-14-920

ORDERING INFORMATION



mat'l. code SEE NOTE 4		surface ISO 1302 ✓	tolerance ISO 406 ISO 1101	projection MM	product family
ltr C		tolerances unless otherwise specified		scale -	title D-SUB W/W CONNECTOR (DP SERIES WITH ASSEMBLY OPTIONS)
ecn no i06-0074		angles	linear		
dr GVJ		date 2006/06/08		FCI	dwg no C-DSUB-0149
D		I11-0003 AMR			
		dr Mini K Vandanath 1999/03/20			
		engr George V Joseph 1999/03/20			
		chr George V Joseph 2006/06/23		sheet 1 of 1 size 5	
		appd K-V SIVADAS 2006/06/23		A3	
sheet index		revision D		type Product Customer Drawing	
1		1			