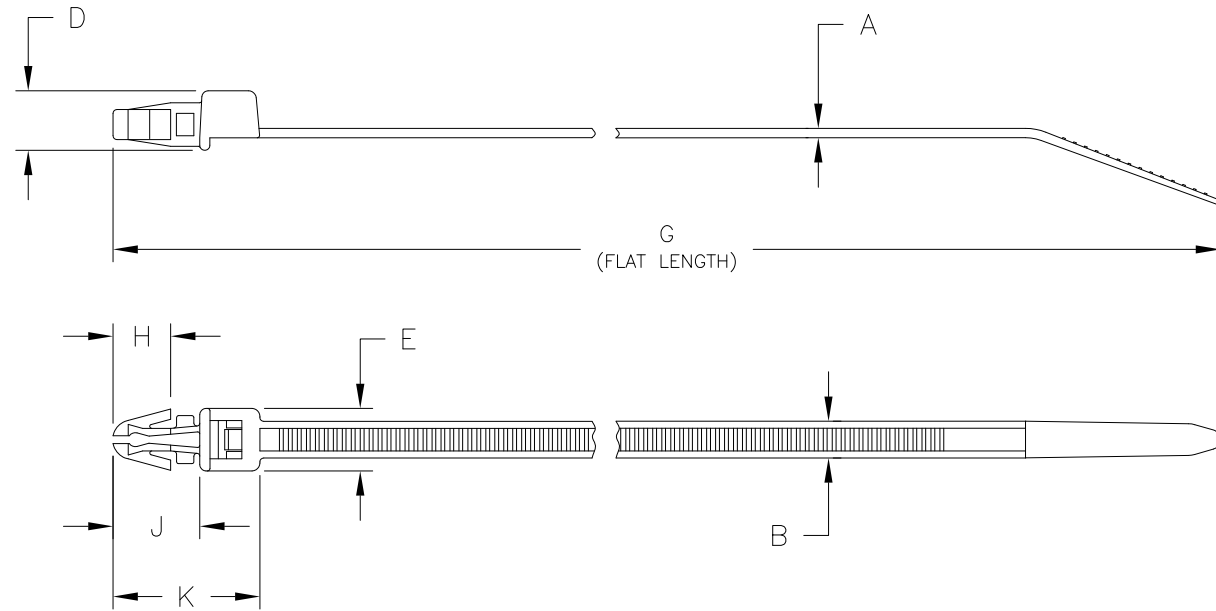


Revision level		Revision Record	Changed	Date	Approved	Date
part	drawing					
—	07					



HOLE DIA: 6.35 TO 7.11
MAX THICKNESS: 3.56

Panel Specifications

SEE CHART
(CONSULT FACTORY FOR
AVAILABLE COLORS)

Material

Dimension tolerances
unless otherwise specified
.XXXX =
.XXX =
.XX =
.X = NOTED
∠ =

Dimension Units mm

PERFORMANCE
SPECIFICATION

Type	Cable Range (mm)	Material	A	B	D	E	G	H	J	K	Min Loop Tensile Strength (newtons)
T50RSF	1.6 to 44.5	PA66	1.3 ±0.2	4.7 ±0.2	7.5 ±0.5	7.8 ±0.5	210.0 ±10.0	7.2 ±0.5	11.2 ±0.5	17.9 ±0.5	225
		PA66HIR									
		PA66HS									
		PA66UV									
		PA66HIRHSUV									

ACAD MECH 2013		Drawn	G.G.G.	02/09/94	Scale	1:1		Computer File Number CT\CST\2050021_07						
		Approved	K.A.C.	12/06/13	Title									
ALL PROPRIETARY RIGHTS IN THE SUBJECT MATTER SHOWN ON THIS DRAWING ARE EXCLUSIVE PROPERTY OF HELLERMANN TYTON		HellermannTyton			T50RSF PUSH MOUNT TIE									
													7930 N. Faulkner Rd. Milwaukee, WI 53224 Ph: (414) 355-1130 Fx: (414) 362-8338	
									CT2050021CST				Sheet 1 of 1	