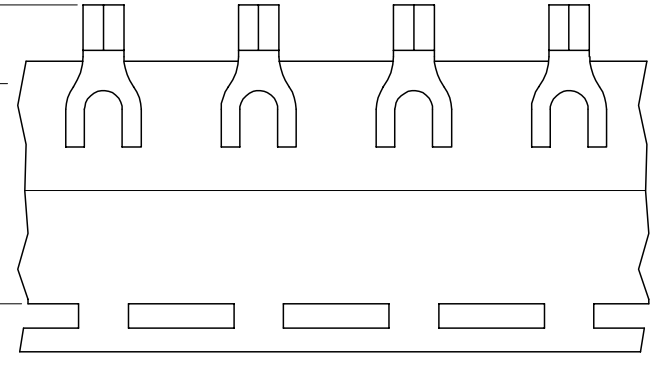
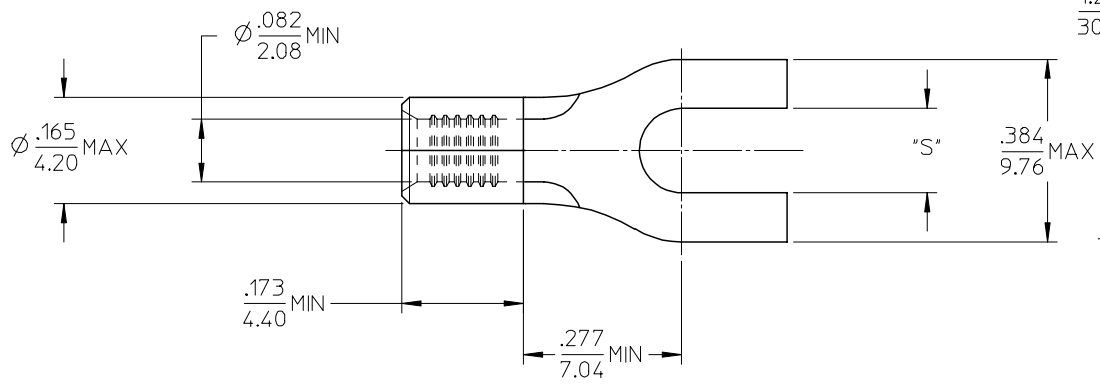
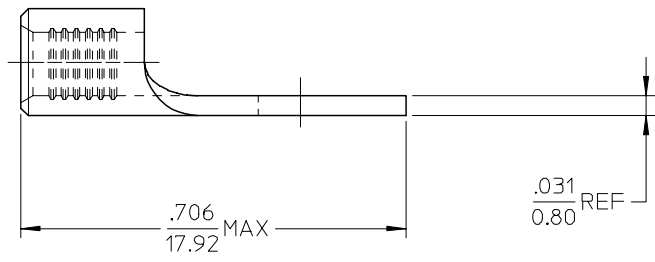


MATERIAL NO.	ENG. NO.	STUD SIZE	"S" MAX	DESCRIPTION
192030381	19203-0381	10	.215/5.46	LOOSE
192030476	192030381T	10	.215/5.46	TAPE



PARTS ON TAPE



- NOTE(S):
1. MATERIAL: STEEL
 2. FINISH: NICKEL PLATING
 3. WIRE SIZE: 16-14 AWG (1.5-2.5 MM²)
 4. PART IS ROHS COMPLIANT.
 5. AMBIENT OPERATING TEMPERATURE UP TO 900 °F (483 °C).

ADDED OPERATING TEMP EC NO: ETC2007-0297 2007/03/13 DRW: JHLE CHKD: JMACNEIL APPR: JMACNEIL 2007/03/14	QUALITY SYMBOLS
	▼=0
	▽=0
	DESCRIPTION
REV	

GENERAL TOLERANCES (UNLESS SPECIFIED)	mm	INCH
4 PLACES	± .005	± .0004
3 PLACES	± .004	± .0003
2 PLACES	± .003	± .0002
1 PLACE	± .002	± .0001
ANGULAR	± .005°	

DRAWN BY	DATE
DMYRICK	2005/04/07
CHECKED BY	DATE
RDEROSS	2005/04/07
APPROVED BY	DATE
RDEROSS	2005/04/07
MATERIAL NO.	DOCUMENT NO.
SEE CHART	SD-19203-021
SIZE	
B	

SCALE	DESIGN UNITS	THIRD ANGLE PROJECTION
1:1	INCH	
TITLE		
SPADE TONGUE TERMINAL, 16-14 AWG, KRIMPTITE, 900 DEG F (483 DEG C)		
MATERIAL NO.		
192030381		
DOCUMENT NO.		
SD-19203-021		
SHEET NO.		
1 OF 1		

MATERIAL NO.		DOCUMENT NO.
192030381		SD-19203-021
SHEET NO.		1 OF 1
THIS DRAWING CONTAINS INFORMATION THAT IS PROPRIETARY TO MOLEX INCORPORATED AND SHOULD NOT BE USED WITHOUT WRITTEN PERMISSION		