

**PLEASE CHECK WWW.MOLEX.COM FOR LATEST PART INFORMATION**

**Part Number:** [63445-4048](#)  
**Status:** **Active**  
**Description:** Anvil

**Documents:**  
[RoHS Certificate of Compliance \(PDF\)](#)

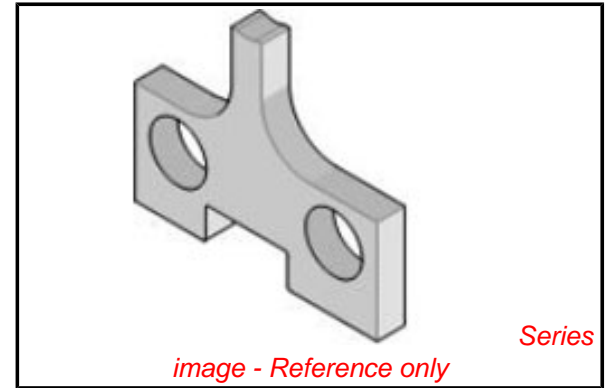
**General**

|                                |  |
|--------------------------------|--|
| Product Family                 | Application Tooling  |
| Series                         | <a href="#">T2504</a>  |
| Comments                       | See Tooling Specification (PDF) Above  |
| Function                       | Cutter   |
| Geographic Area                | Global   |
| Level of Automation            | Semi-Automatic   |
| More Detailed Tech Information | <a href="mailto:applicationtooling@molex.com">applicationtooling@molex.com</a>                           |
| Product Name                   | N/A  |
| Survey                         | <a href="http://www.molex.com//review/apptool_survey.html">www.molex.com//review/apptool_survey.html</a> |
| Tool Type                      | Anvil  |
| UPC                            | 822350116565   |

**Material Info**

**Reference - Drawing Numbers**

Application Tooling Documents ATS-STANDARD-PARTS



**EU RoHS**

**ELV and RoHS  
Compliant**

**REACH SVHC**

Not Reviewed

**Low-Halogen Status**

**Not Reviewed**

**China RoHS**



**Need more information on product  
environmental compliance?**

Email [productcompliance@molex.com](mailto:productcompliance@molex.com)  
 For a multiple part number RoHS Certificate of  
 Compliance, [click here](#)

Please visit the [Contact Us](#) section for any  
 non-product compliance questions.

**Search Parts in this Series**

[T2504Series](#)

**Use With**

[63857-6000](#) , [63857-6070](#) , [63867-6000](#) ,  
[63867-6070](#)