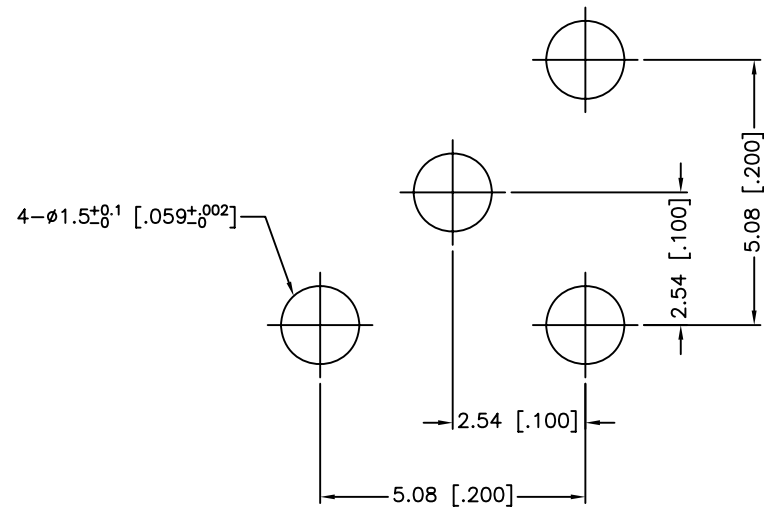
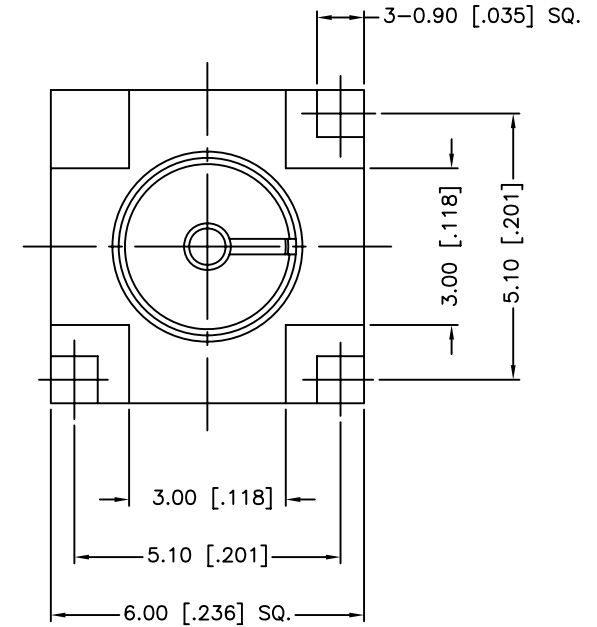
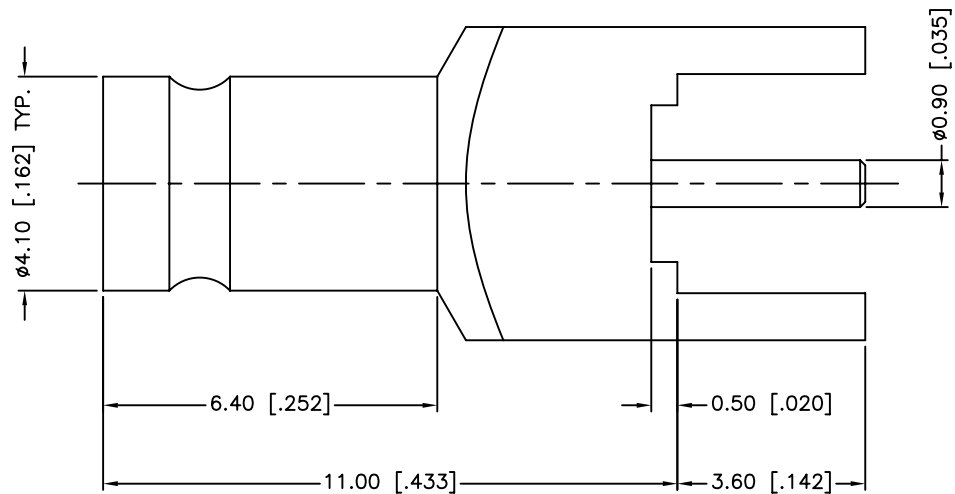


REV.	DATE	ECR NO.	DESCRIPTION
NC	11/11/10	XXXXXX	INITIAL RELEASE



RECOMMENDED MOUNTING HOLE



VSWR (RETURN LOSS): 1.15 MAX. @ 0-3 GHz

UNLESS OTHERWISE SPECIFIED DIMENSIONS ARE IN MILLIMETERS. DIMENSIONS IN [] ARE IN INCHES AND FOR CUSTOMER REFERENCE ONLY.

UNLESS OTHERWISE SPECIFIED TOLERANCES FOR MILLIMETERS ARE:
0.5 - 8mm ± 0.20mm
8 - 30mm ± 0.40mm
30 - 120mm ± 0.50mm

UNLESS OTHERWISE SPECIFIED TOLERANCES FOR INCHES ARE:
.020 - .315 = ± 0.007"
.315 - 1.180 = ± 0.015"
1.180 - 4.724 = ± 0.020"

DO NOT SCALE DRAWING

APPROVALS		DATE
DRAWN	M.ZHANG	11/11/10
CHECKED		
ISSUED		
SHEET	1 OF 1	
CAD FILE	C:/CONNEX/282127-75-10.DWG	

Amphenol Connex			
PART DESCRIPTION 1.0/2.3 JACK PCB MOUNT WITH 3-LEGS (FOR 75 OHM)			
PART NO. 282127-75-10			
DWG. NO.	282127-75-10.DWG	REV.	NC
SIZE	A	SCALE	NA

QTY	FINISH	MATERIAL	DESCRIPTION
1	GOLD	BER. COPPER	CONTACT PIN
1	NATURAL	PTFE	INSULATOR
1	GOLD	BRASS	BODY