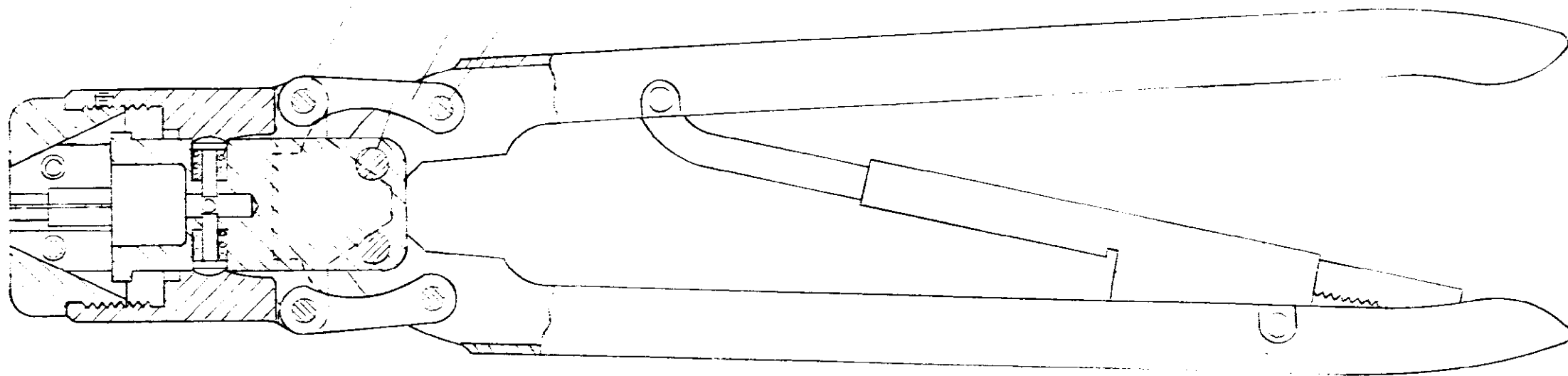


15547

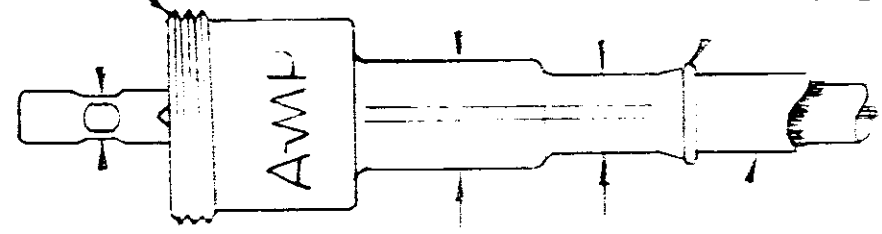


BRIDGEMAN 237  
233

207 HILTI CRIMP  
221

AMP COLLECTOR  
2-33031-4

FERRULE  
2-33031-2



102 CENTER  
113 CONDUCTOR

CABLE NO. RG-58A 50

METHOD OF GAGING CRIMP DIMS.  
THE CRIMP DIMS. APPLY ONLY TO THE ABOVE  
CONNECTIONS ON A CRIMPED PRODUCT

2	A	33031-4	AMP RETAINING	5
2	-	21045-6	PIN RETAINING	4
2	A	33031-2	AMP	3
2	A	21045-6	PIN RETAINING	2
2	A	33031-7	PIN RETAINING	1
2	A	330487	PIN RETAINING	1

THIS INFORMATION IS CONFIDENTIAL AND IS DISCLOSED TO YOU ON THE CONDITION THAT NO FURTHER DISCLOSURE IS MADE BY YOU TO OTHER THAN AMP PERSONNEL WITHOUT WRITTEN AUTHORIZATION FROM AMP INCORPORATED, HARRISBURG, PA. DIMENSIONS IN INCHES. DO NOT SCALE PRINT.

REVISION RECORD		REVISION RECORD		REVISION RECORD		REVISION RECORD		REVISION RECORD		REVISION RECORD		REVISION RECORD		REVISION RECORD		REVISION RECORD		REVISION RECORD		REVISION RECORD	
LTR	REVISION RECORD	DR	CHK	DATE	REQUIRED PER ASSEMBLY		DESCRIPTION		DWG SIZE		NUMBER	NAME	REMARKS	REV NO	CUSTOMER COPY REFERENCE ONLY						
L REVISED		BS. KY		10/65		C REVISED		J.S.R.		5-25-6		MATERIAL AND FINISH		AMP INCORPORATED		HARRISBURG, PENNA.		CLASS		TYPE	
E REVISED		L.E.W.		1/66		A REVISED		CM		10/50		WIRE - RANGE - INSULATION		RG-58A		SCALE		LOC		NO	
APP		NAME		HARRISBURG ASSEMBLY		TOLERANCE EXCEPT AS NOTED		= .015		= .010		SCALE		1:1		LOC		NO		REV	