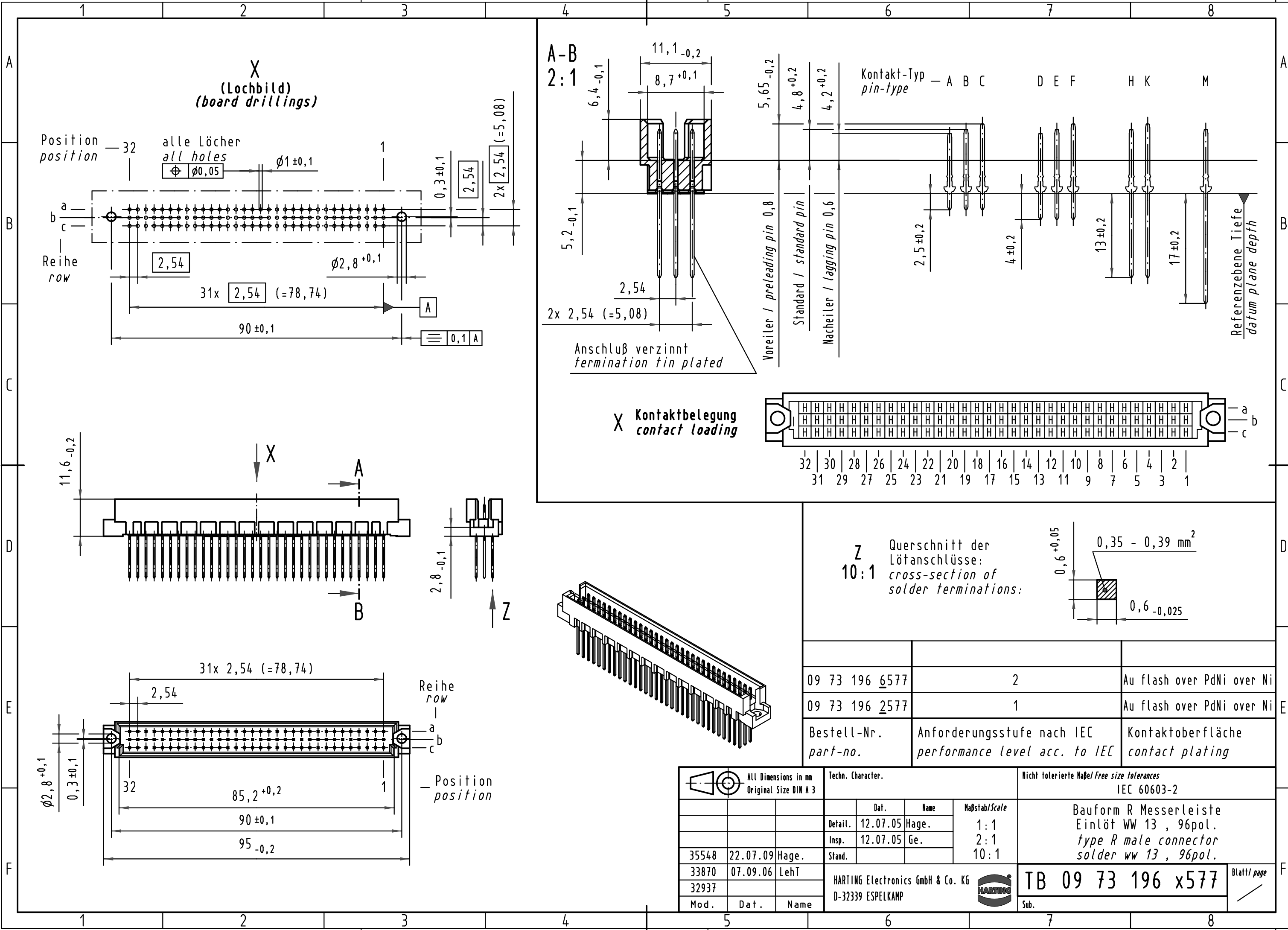
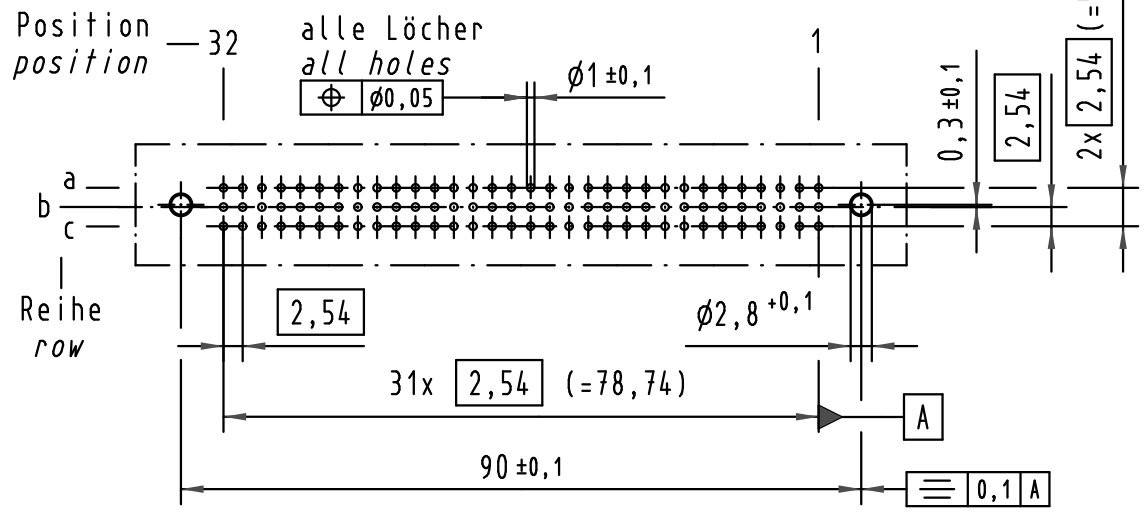


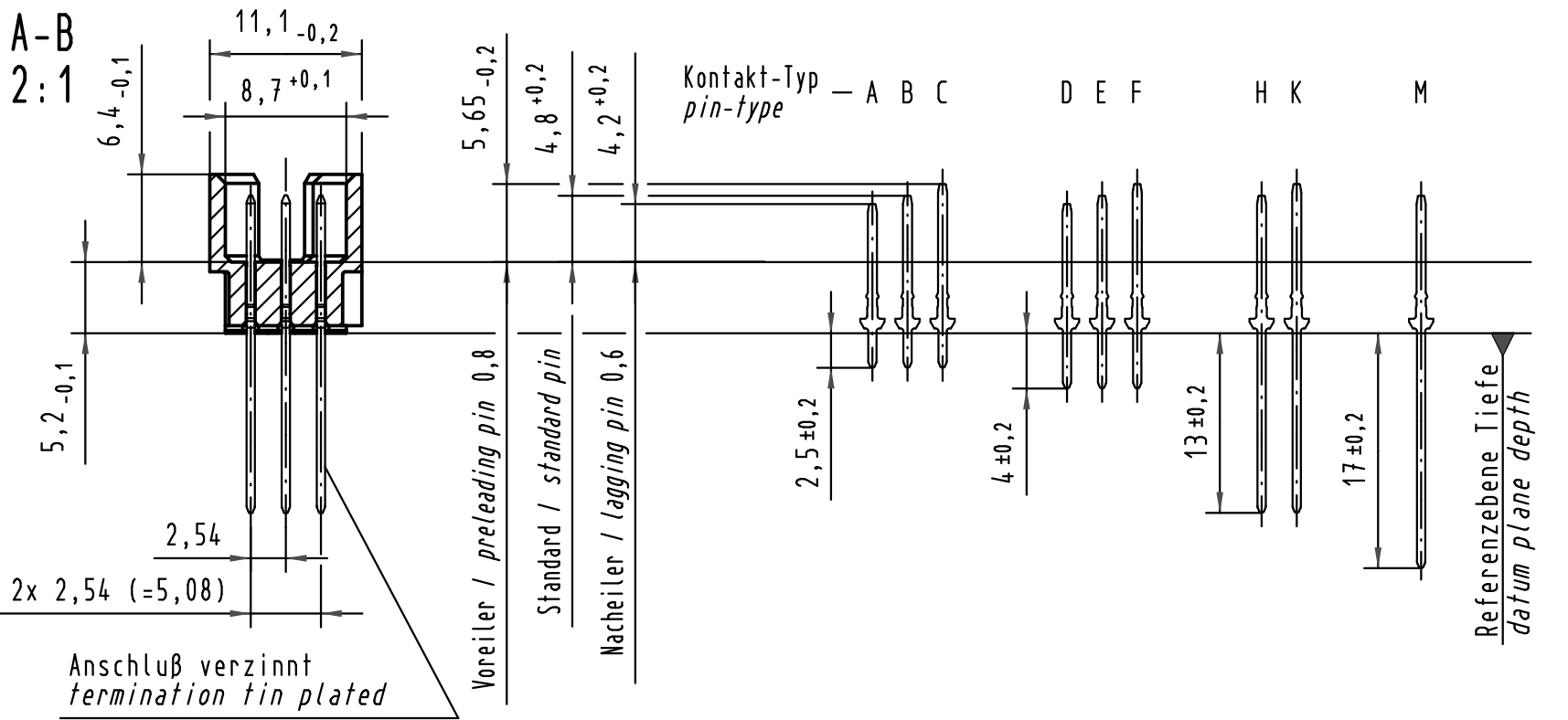
Alle Rechte vorbehalten/ All rights reserved



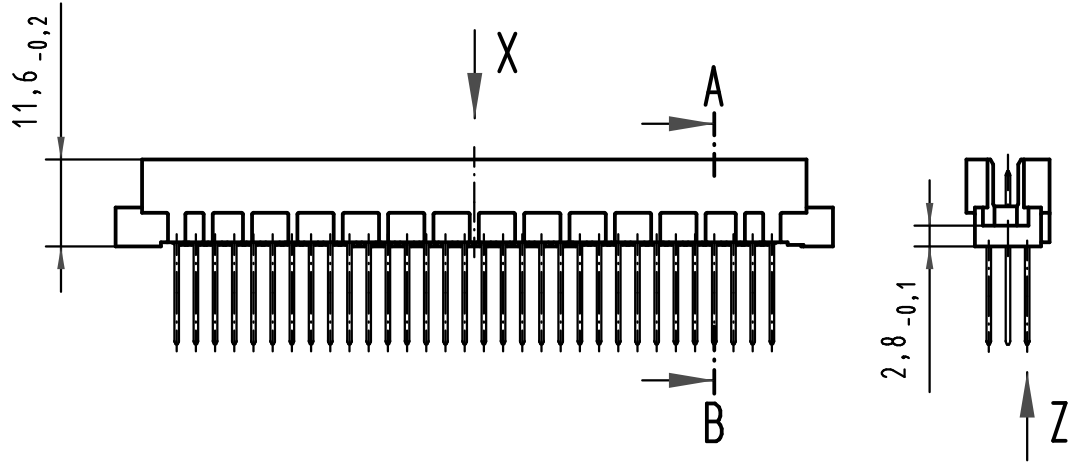
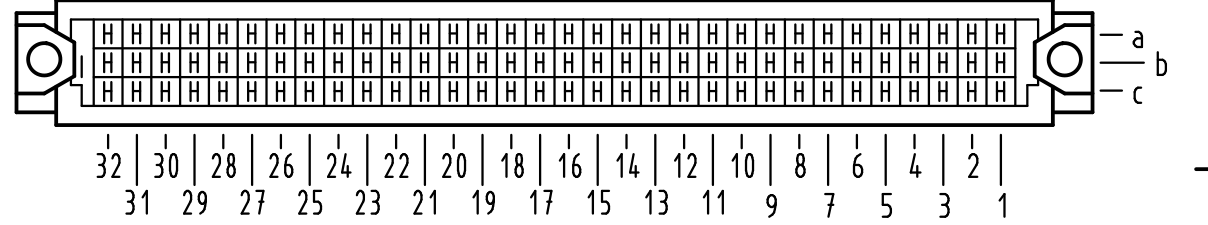
**X**  
(Lochbild)  
(board drillings)



**A-B**  
2:1

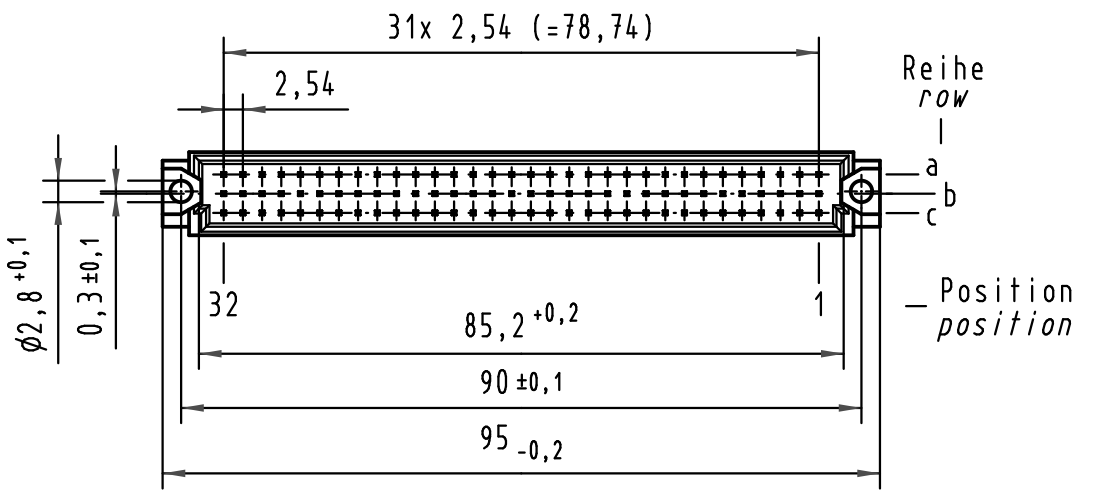
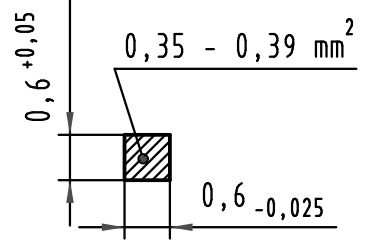


**X** Kontaktbelegung  
contact loading



**Z**  
10:1

Querschnitt der  
Lötanschlüsse:  
cross-section of  
solder terminations:



09 73 196 6577

2

Au flash over PdNi over Ni

09 73 196 2577

1

Au flash over PdNi over Ni

Bestell-Nr.  
part-no.

Anforderungsstufe nach IEC  
performance level acc. to IEC

Kontaktoberfläche  
contact plating

All Dimensions in mm Original Size DIN A 3			Techn. Character.			Nicht tolerierte Maß/Free size tolerances IEC 60603-2			
			Dat.	Name	Maßstab/Scale	Bauform R Messerleiste Einlöt WW 13 , 96pol. type R male connector solder ww 13 , 96pol.			
			Detail.	12.07.05 Hage.					1:1
			Insp.	12.07.05 Ge.					2:1
35548	22.07.09	Hage.	Stand.		10:1				
33870	07.09.06	LehT							
32937									
Mod.	Dat.	Name	HARTING Electronics GmbH & Co. KG			<b>TB 09 73 196 x577</b>			
			D-32339 ESPELKAMP						
						Sub.			



**TB 09 73 196 x577**

Blatt/ page