

Products

- Products Overview
- Product Search**
- Evaluate
 - FAQ's
- How to Buy
 - Bill of Material
 - Favorite Products List
 - Locate Distributor

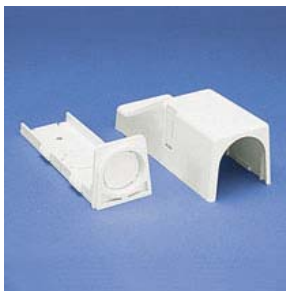
Home > Products Overview > Product Search >

Current refinements (click to remove) Search Tips

Part Number > PEEF36IW-X

Your search criteria matched only one product, shown below

PEEF36IW-X



Fittings are available for the PD3 and the PD6 raceway to route cabling. In addition to the coupler, inside corner fitting, right angle fittings etc, there is also a Flexible Fitting which is used to route PD raceway around or over obstacles and the Entrance End fitting used to connect directly to conduit.

▪ Part Number	PEEF36IW-X
▪ RoHS Compliancy Status	Compliant
▪ Part Description	Entrance End Fitting for PD profile raceway sizes 3 and 6.
▪ Product Type	Power Rated Fittings
▪ Color	Off White
▪ CSA Certified	Yes
▪ UL Listed	Yes
▪ Fitting Type	Entrance End
▪ CE Compliant	No
▪ Pricing Description	PD3 / PD6 Power Rated Entrance End Fitting
▪ Product Size	6
▪ Min. Order UOM	PC
▪ Min. Order Qty.	10
▪ BOM Qty. (# of Pkgs.)	<input type="text" value="0"/>
▪ Add to Favorite Product List	<input type="checkbox"/>

Please [register](#) to utilize the 'Bill of Materials', 'Submit Quotes' and 'Favorite Product List' features.