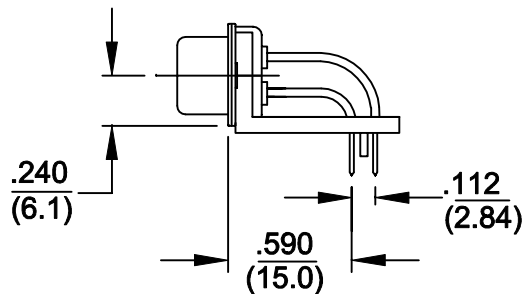
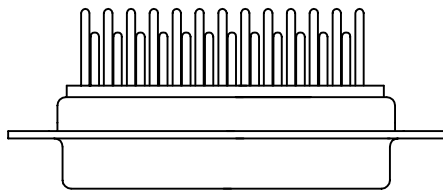
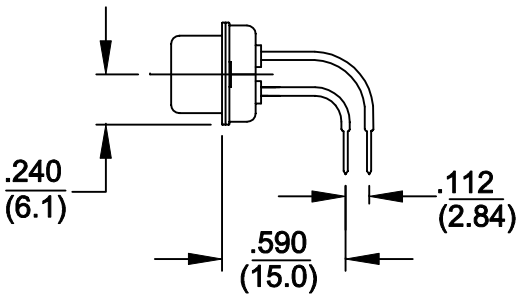
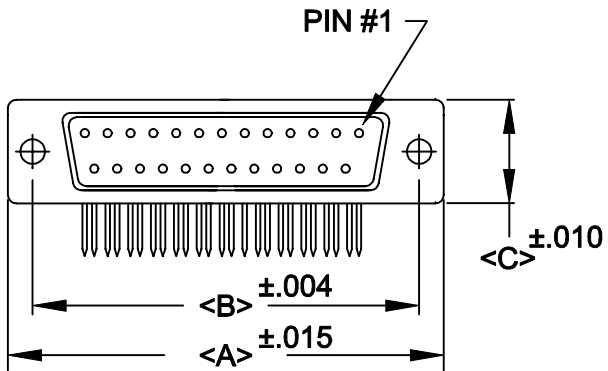


DESCRIPTION: R/A .590" FILTERED D-SUB



|    | A             | B             | C             | D              |
|----|---------------|---------------|---------------|----------------|
| 9  | 1.204<br>30.6 | .984<br>25.0  | .480<br>12.20 | .666<br>16.92  |
| 15 | 1.535<br>39.0 | 1.312<br>33.3 | .480<br>12.20 | .994<br>25.25  |
| 25 | 2.078<br>52.8 | 1.850<br>47.0 | .480<br>12.20 | 1.534<br>38.96 |
| 37 | 2.724<br>69.2 | 2.500<br>63.5 | .480<br>12.20 | 2.079<br>52.80 |



480-XXX-212-XX1

SERIES \_\_\_\_\_  
 POSITIONS \_\_\_\_\_  
 009 \_\_\_\_\_  
 015 \_\_\_\_\_  
 025 \_\_\_\_\_  
 037 \_\_\_\_\_  
 050 \_\_\_\_\_  
 GENDER \_\_\_\_\_  
 1 = MALE  
 2 = FEMALE  
 TERMINATION \_\_\_\_\_  
 1 = DIP SOLDER  
 SHELL PLATING \_\_\_\_\_  
 2 = TIN  
 HARDWARE OPTIONS \_\_\_\_\_  
 00 = NO HARDWARE  
 58 = STABILIZER BAR(4-40 INSERT/BOARD LOCK)  
 PLATING OPTIONS \_\_\_\_\_  
 1 = GOLD FLASH

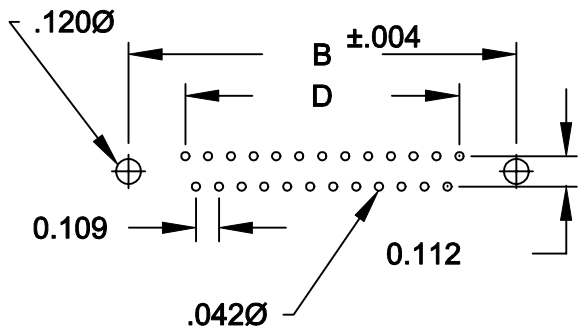
SPECIFICATIONS:

MATERIALS:

SHELL: STEEL, TIN PLATED  
 INSULATOR: UL 94V-0 RATED PBTP  
 GLASS-FIBER REINFORCED

ELECTRICALS:

INDIVIDUAL CAPACITOR VALUE = 1000 pF  
 OTHER VALUES AVAILABLE: CONSULT FACTORY  
 CURRENT RATING: 5 AMPS  
 CONTACT RESISTANCE: <10 mOHMS  
 INSULATOR RESISTANCE: 1000 OHMS  
 VOLTAGE: 1 KV / AC  
 TEMPERATURE: -55°C TO +125°C



|                |   |                         |                                |                  |
|----------------|---|-------------------------|--------------------------------|------------------|
|                | THESE DRAWINGS AND SPECIFICATIONS ARE THE PROPERTY OF NorComp AND SHALL NOT BE REPRODUCED, COPIED OR USED AS THE BASIS FOR THE MANUFACTURE OF SALE OF APPARATUS WITHOUT WRITTEN PERMISSION. |                         | DRAWN:<br><b>WAYNE ROBBINS</b> | DATE:<br>9-06-98 |
|                |   |                         | CHECKED:                       | DATE:            |
| <b>NorComp</b> |   | SCALE:<br>1:1           | SHEET<br>1 OF 1                | REV<br>4         |
|                |   | DWG NO. 480-XXX-212-XX1 |                                |                  |