

10 9 8 7 6 5 4 3 2 1

F

E

D

C

B

A

F

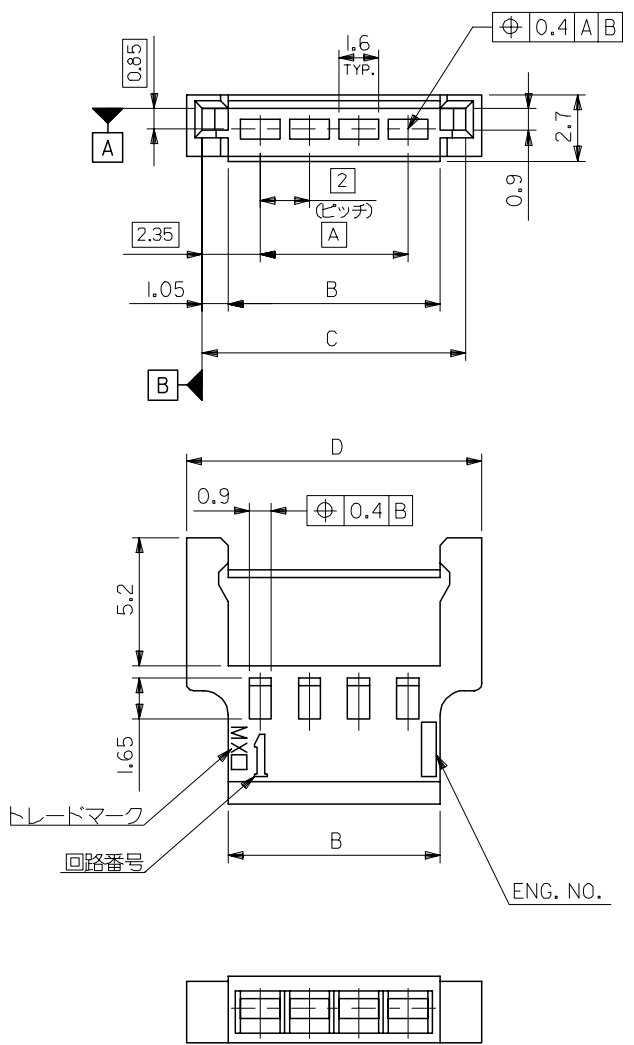
E

D

C

B

A



注記

1. 嵌合相手 : 51005  
MATE WITH : 51005
2. 適合ターミナル : 50012  
APPLICABLE TERMINAL : 50012
3. ELV 及び RoHS 適合品  
ELV AND RoHS COMPLIANT.

14	12.7	10.6	8	51006-0500	5
12	10.7	8.6	6	↑ - 0400	4
10	8.7	6.6	4	↓ - 0300	3
8	6.7	4.6	2	51006-0200	2
D	C	B	A	MATERIAL NO.	極数

MATERIAL  
PBTP (UL94V-0)

REVISED EC NO: J2008-0075 DRWN: NABEI 2007/07/16 CHKD: THARUYAMA 2007/07/17 APPR: NUKITA 2007/07/17	GENERAL TOLERANCES (UNLESS SPECIFIED)		DIMENSION STYLE MM ONLY		SCALE 5:1	DESIGN UNITS METRIC	THIRD ANGLE PROJECTION	
	10 UNDER	± 0.2	DRAWN BY S. MOCHIZUKI		DATE '89/08/22	TITLE 2.0 WIRE TO WIRE CONN. PLUG HOUSING		
	10 OVER 30 UNDER	± 0.25	CHECKED BY H. H.		DATE '90/05/16	MOLEX INCORPORATED		
	30 OVER	± 0.3	APPROVED BY M. ENOMOTO		DATE '90/05/16	DOCUMENT NO. SD-51006-001		
	ANGULAR	± 3 °	MATERIAL NO.		SEE TABLE		SHEET NO. 1 OF 1	
DRAFT WHERE APPLICABLE MUST REMAIN WITHIN DIMENSIONS			THIS DRAWING CONTAINS INFORMATION THAT IS PROPRIETARY TO MOLEX INCORPORATED AND SHOULD NOT BE USED WITHOUT WRITTEN PERMISSION					