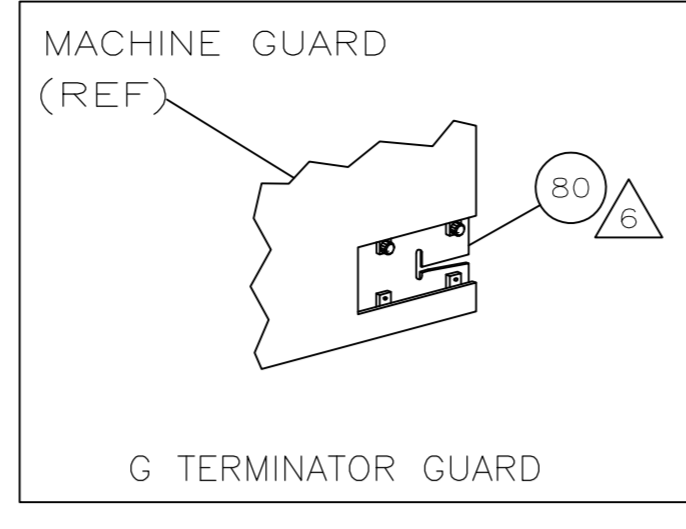


THIS DRAWING IS UNPUBLISHED. RELEASED FOR PUBLICATION. ALL RIGHTS RESERVED.

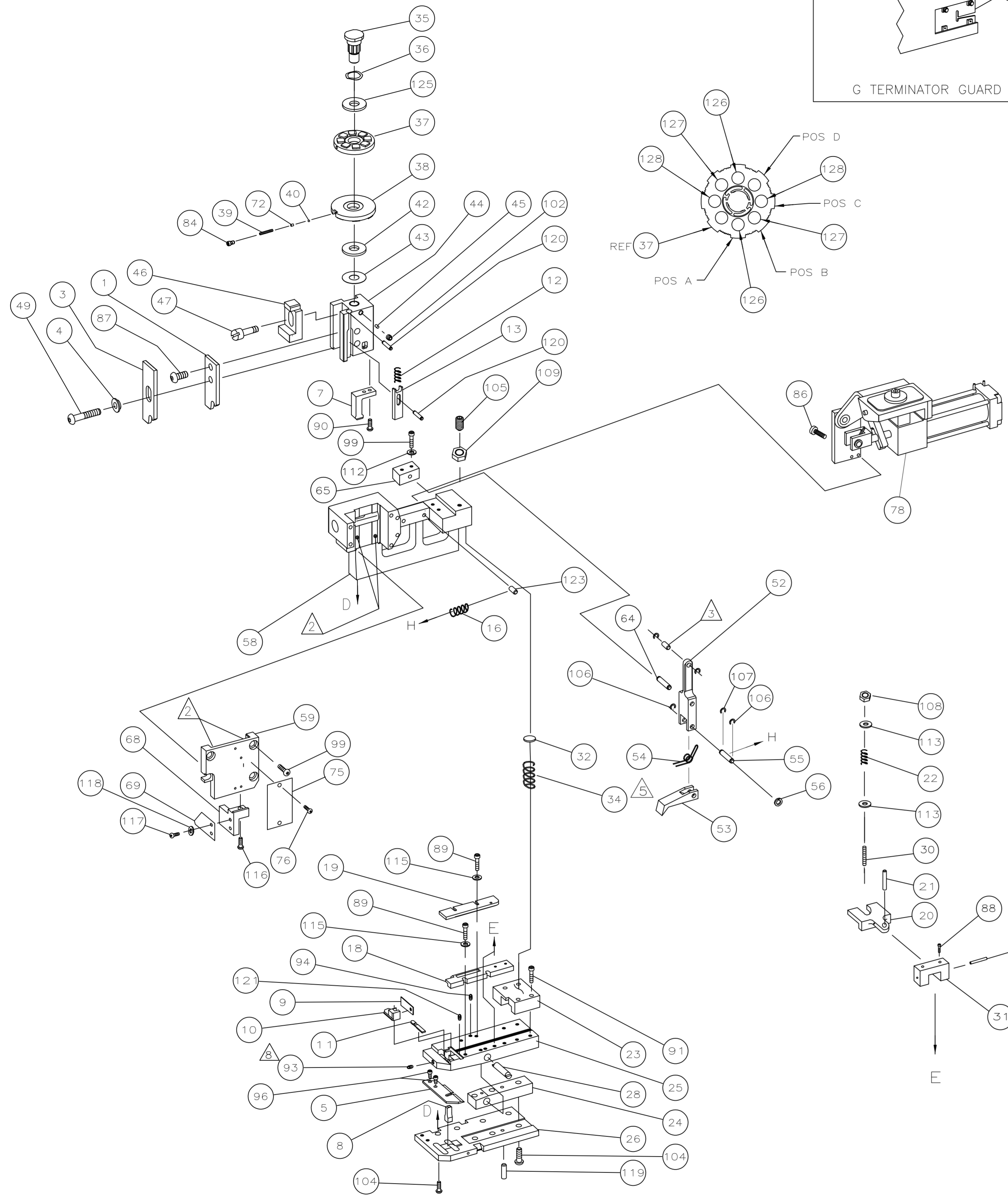
PART NUMBER	REV	FIRST USED
687392-9	M	354500-1



		.187		.187 FORGN		.205			
		CRIMPING DATA		PAD LTR		CRIMP HEIGHT		WIRE SIZE	
42486	150680	42199	A	.040±.002 [1.01±0.05mm]		16			
60219	150634	42711	B	.037±.002 [0.94±0.05mm]		18			
60657	170140	42809	C	.035±.002 [0.89±0.05mm]		20			
61401		61425	D	NOT USED					
62591		61693							
62756		62183							
63417		63476							
63557									
2238041									
63696									

REVISIONS				
P	LR	DESCRIPTION	DATE	BY
M		ECR-17-003359	20DEC2016	KH

-9 BENCH MODEL G AIR FEED



QTY	REV	DESCRIPTION	ITEM NO
-	-	-	129
2	-	C 5-354779-2 PIN, WIRE DISC (.3250)C	128
2	-	C 4-354779-8 PIN, WIRE DISC (.3230)B	127
2	-	C 4-354779-4 PIN, WIRE DISC (.3210)A	126
1	-	A 986950-1 WASHER, FLAT PRECISION	125
			124
1	-	A 3-22183-9 PIN, GROOVED(.187 X 1.25)	123
			122
2	-	A 3-21028-2 PIN, SLOTTED SPRING (Φ.094X.25)	121
2	-	A 4-21028-9 PIN, SLOTTED SPRING (Φ.125X.38)	120
1	-	A 21029-5 PIN, SLOTTED SPRING (Φ.188X.75)	119
2	-	A 21024-3 WASHER, LOCK (#6)	118
2	-	A 1-21000-8 SCREW,SHC(6-32X.25)STOP	117
1	-	A 2-22603-0 SCREW,SHC(8-32X.38)MTG	116
4	-	A 21024-4 WASHER, LOCK (#8)	115
2	-	A 21055-6 WASHER, FLAT (#8)	114
2	-	A 21899-2 WASHER,FLAT (#10)	113
2	-	A 21024-5 WASHER, LOCK (#10)	112
			111
			110
1	-	A 1-22202-7 NUT, HEX (5/16-24)	109
1	-	A 21022-3 NUT,HEX(LOCKING) (10-32)	108
1	-	A 1-21986-2 RING,RET "E" Φ3/16	107
2	-	A 21045-3 RING,RET "C" Φ3/16	106
1	-	A 8-21007-5 SCREW,SKT SET(5/16-24X.75)	105
7	-	A 2-22733-8 SCREW, BHC (1/4-20X.63)	104
			103
1	-	A 21009-2 SCREW,SKT SET(1/4-20X.25)	102
			101
2	-	A 3-21000-9 SCREW, SHC (10-32X1.00)	100
6	-	A 3-21000-8 SCREW, SHC (10-32X.88)	99
1	-	A 3-21000-6 SCREW, SHC (10-32X.62)	98
			97
2	-	A 7-21000-6 SCREW, SHC (10-32X.38)	96
			95
1	-	A 4-21006-5 SCREW, SKT SET (8-32X.62)	94
1	-	A 21061-9 SCREW, SKT SET (8-32X.25)	93
			92
4	-	A 2-21000-9 SCREW, SHC (8-32X.75)	91
2	-	A 1-23030-1 SCREW, SHC (NYLOK)(8-32X.62)	90
4	-	A 2-22603-3 SCREW, SHC (8-32X.62)	89
2	-	A 2-21000-8 SCREW, SHC (8-32X.62)	88
1	-	A 2-21002-1 SCREW, SBHC (8-32X.38)	87
2	-	A 21001-3 SCREW,SHC (1/4-20X.62)	86
			85
1	-	A 23030-1 SCREW, SHC(NYLK)(6-32X.25)	84
			83
			82
			81
REF	-	A 679532-1 INSERT, GUARD	80
			79
1	-	D 462622-2 AIR FEED ASSEMBLY	78
			77
2	-	A 21017-2 SCR,DRIVE(#2X.19)ID	76
1	-	B 461264-1 PLATE, IDENTIFICATION	75
			74
			73
1	-	A 690603-1 SPRING, ASSIST	72
			71

QTY	REV	DESCRIPTION	ITEM NO
			70
1	-	B 318530-2 STOP, WIRE	69
1	-	B 318529-1 BLOCK, HOUSING	68
			67
			66
1	-	B 456987-1 BLOCK, PIVOT	65
1	-	A 457058-1 PIN, PIVOT	64
			63
			62
			61
			60
1	-	C 318528-1 CAP, RAM	59
1	-	D 457079-1 HOUSING	58
			57
1	-	B 25745-1 RING, SPLIT	56
1	-	B 240624-1 PIN, FEED FINGER	55
1	-	B 691499-1 SPRING, FEED FINGER	54
1	-	B 454568-2 FINGER, FEED	53
1	-	B 457057-1 ARM, PIVOT	52
			51
			50
1	-	A 3-21002-5 BOLT, CRIMPER	49
			48
1	-	A 22353-8 SCREW, SHOULDER	47
1	-	A 690578-1 BLOCK, INSULATION ADJUST	46
1	-	A 690191-1 PLUG, NYLON	45
1	-	C 454574-1 RAM	44
1	-	A 690125-1 WASHER, LAMINATED	43
1	-	A 1-690124-1 WASHER, RAM	42
			41
			40
1	-	A 23241-6 BALL, STEEL	39
1	-	A 690170-1 SPRING, COMPRESSION	38
1	-	C 690142-1 DISC, INSULATION	37
1	-	D 354777-1 WIRE DISC, PLASTIC	36
1	-	B 22480-5 WASHER, SPRING	35
1	-	B 690212-1 POST, RAM	34
1	-	A 3-23846-5 SPRING, HINGE BAR	33
			32
1	-	A 690573-1 SPACER, SPRING	31
1	-	B 454569-1 DRAG MOUNT	30
1	-	A 1-22354-8 STUD, DRAG	29
1	-	B 21030-2 PIN, DRAG MOUNT	28
1	-	B 1633530-1 PIN, HINGE	27
			26
1	-	C 684905-1 PLATE, BASE	25
1	-	B 454579-2 HINGE BAR	24
1	-	B 690571-1 BLOCK, STABILIZER	23
1	-	C 690585-1 BLOCK, PRESSURE	22
1	-	A 22282-5 SPRING, DRAG	21
1	-	A 21030-6 LEVER, DRAG	20
1	-	A 454570-1 DRAG, STOCK	19
1	-	C 454573-1 GUIDE, STRIP (REAR)	18
1	-	B 318739-8 GUIDE, STRIP (FRONT)	17
			16
1	-	A 2-22287-6 SPRING, FEED RETURN	15
			14
			13
1	-	C 692134-7 POSITIONER, TERMINAL	12
1	-	A 5-22280-5 SPRING, TERM. POSITIONER	11
1	-	B 454712-4 PLATE, REAR SHEAR	10
1	-	C 454578-1 ANVIL INSERT	9
1	-	B 690569-2 PLATE, FRONT SHEAR	8
1	-	D 690718-1 ANVIL	7
1	-	B 454575-3 BLADE, SLUG	6
			5
1	-	B 684906-1 PLATE, ANVIL RETAINING	4
1	-	B 690574-1 SPACER, TUBULAR INSUL CRIMPER	3
1	-	C 690715-1 CRIMPER, INSULATION	2
			1
1	-	C 690716-3 CRIMPER, WIRE	1

- 1 RECOMMENDED SPARE PARTS.
- 2 GREASE LIGHTLY.
- 3 LUBRICATE DAILY USING NO. 20 MACHINE OIL.
- 4 CHANGE TERMINAL POSITIONER AS REQUIRED TO KEEP TERMINAL ON CENTER OF ANVIL.FASTEN EXTRA-TERMINAL POSITIONER TO APPLICATOR.
- 5 AFTER ASSEMBLY OF APPLICATOR, PROPER SPRING PRESSURE (ITEM 34) CAN BE OBTAINED BY TIGHTENING SET SCREW (ITEM 105) UNTIL CONTACT IS MADE WITH SPACER (ITEM 32) THEN TIGHTEN AN ADDITIONAL 5 1/2 - 6 REVOLUTIONS.

- 6 GUARD MUST BE IN PLACE WHEN OPERATING APPLICATOR IN A BENCH MACHINE
- 7 WIRE STRIP LENGTH .205 SERIES .205-.235 .187 SERIES .173-.203
- 8 APPLY SEALANT 1-23419-5 AT ASSEMBLY.

QTY REQD PER ASSY	U/M	DWG SIZE	PART NO	DESCRIPTION	ITEM NO
				REVISION OF EACH ASSY NO (WHEN BLANK, USE DWG REVISION)	

QTY REQD PER ASSY	U/M	DWG SIZE	PART NO	DESCRIPTION	ITEM NO
				REVISION OF EACH ASSY NO (WHEN BLANK, USE DWG REVISION)	

THIS DRAWING IS A CONTROLLED DOCUMENT.		DIN P. MATHIAS 2-23-96	
DIMENSIONS: INCHES		CHK: C. FRISMAN 2-26-96	
TOLERANCES UNLESS OTHERWISE SPECIFIED:		APPRO: J. ELBIN 2-26-96	
0 PLC ± .010		NAME: END FEED HINGE BAR APPLICATOR	
1 PLC ± .005		SIZE: A1	
2 PLC ± .003		CASE CODE: 00779	
3 PLC ± .002		DRAWING NO: 687392-9	
4 PLC ± .001		RESTRICTED TO:	
5 PLC ± .0005		WEIGHT: 0	
ANGLES ± .010		CUSTOMER DRAWING	
FINISH		SCALE: NTS	
		SHEET 1 OF 1	
		REV: M	

CUSTOMER AND ASSEMBLY DRAWING