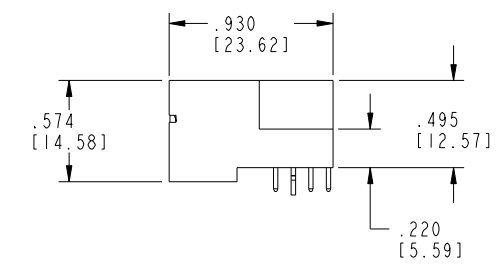
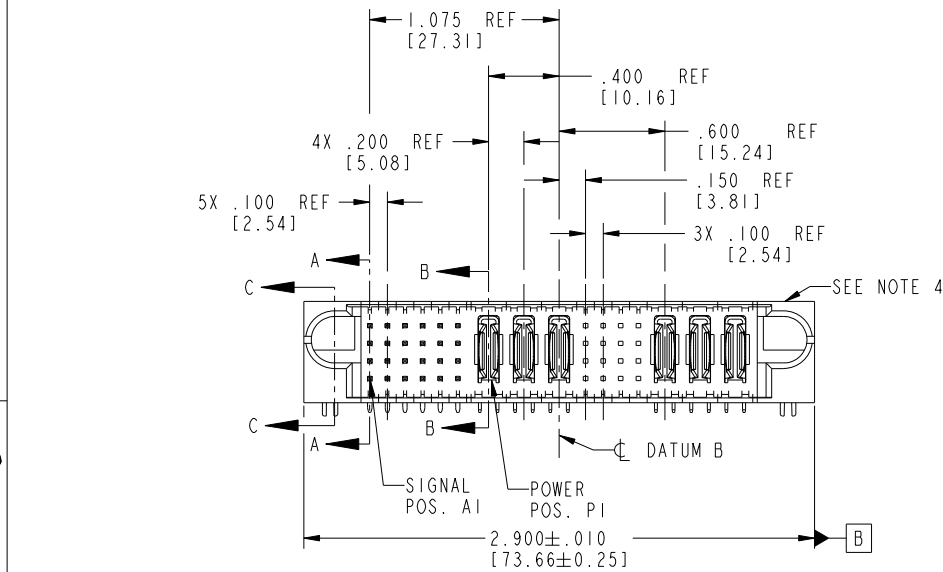


Tous droits strictement réservés. Reproduction ou communication à des tiers interdite sous quelque forme que ce soit sans autorisation écrite du propriétaire. Propriété de c.FCI. Droits de reproduction FCI.



All rights strictly reserved. Reproduction or issue to third parties in any form whatever is not permitted without written authority from the proprietor. Property of FCI. Copyright FCI.

PRODUCT NO.	ROWS	SIGNAL						POWER			SIG.				POWER			E2
		E1	1	2	3	4	5	6	P1	P2	P3	7	8	9	10	P4	P5	
51939-090_	D C B A	UUUUUUH TTTTTTTT SSSSSSS RRRRRRR						PA PA PA			XXXXXX XXXXXX XXXXXX XXXXXX				PA PA PA			



CODE	DIM "M" MATING LENGTH	CONTACT TYPE
E	.220 [5.59]	SIGNAL
H	.220 [5.59]	SIGNAL
R	.270 [6.86]	SIGNAL
S	.270 [6.86]	SIGNAL
T	.270 [6.86]	SIGNAL
U	.270 [6.86]	SIGNAL
PA	N/A [N/A]	POWER
HA	N/A [N/A]	HOLD-DOWN
X	OMITTED	OMITTED

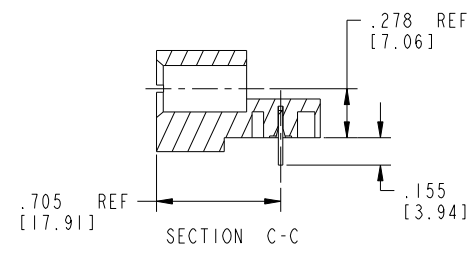
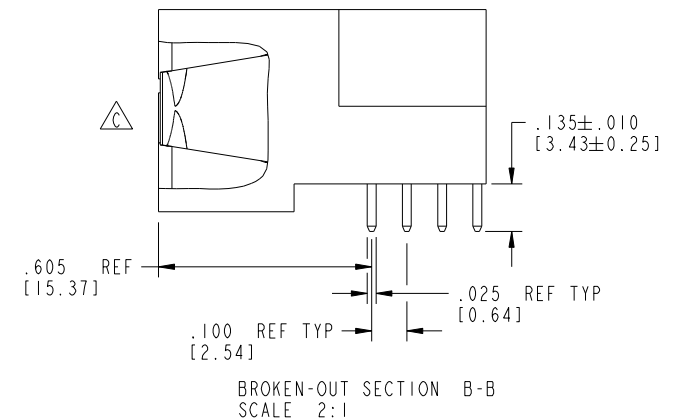
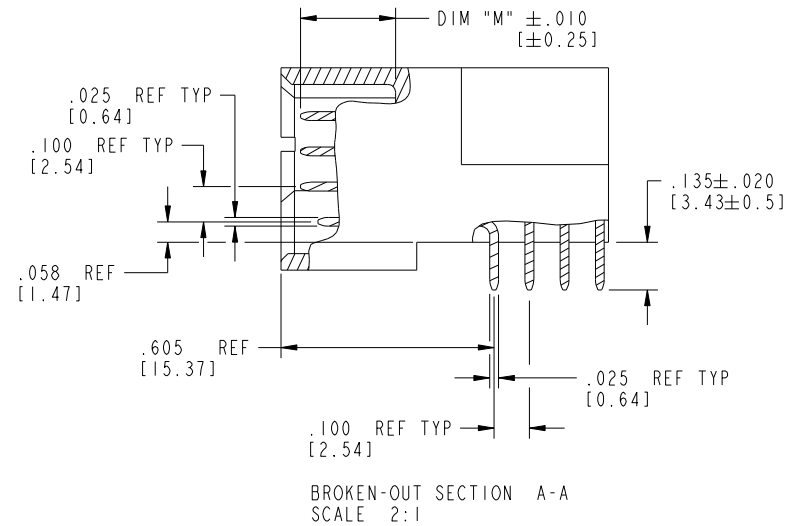
mat'l code				SEE NOTE 2		tolerances unless otherwise specified		CUSTOMER		FCI	
ltr	ecn no.	dr	date	linear	.XX±.01/0.X±0.3	projection		COPY		www.fciconnect.com	
A	V03-1199	TAB	11/06/03		.XXX±.005/0.XX±0.13	INCH/MM		title		24S + 3P + 16S + 3P	
B	DG06-0014	JMG	01/13/06	angles	.XXX±.002/0.XXX±0.051	scale		product family		PwrBlade	
C	DG09-0003	WD	01/17/09		0°±2°	1:1		size		code	
				dr	T. BRUNGARD 11/06/03			dwg no		213	
				enr	M. GRAY 11/06/03			A		sheet	
				chr	M. GRAY 11/06/03			51939-090		1 of 4	
				appd	M. GRAY 11/06/03						
sheet index	revision sheet	C	C	C	C						
		1	2	3	4						

cage code 22526

Tous droits strictement reserves. Reproduction ou communication a des tiers interdite sous quelque forme que ce soit sans autorisation écrite du propriétaire. Propriete de c FCI. Droits de reproduction FCI.

All rights strictly reserved. Reproduction or issue to third parties in any form whatever is not permitted without written authority from the proprietor. Property of FCI. Copyright FCI.

PRODUCT NUMBER
51939-090__
NOTE: 3



mat'l code		SEE NOTE 2		tolerances unless otherwise specified		CUSTOMER		FCI		www.fciconnect.com	
ltr	ecn no.	dr	date	linear	.XX±.01/0.X±0.3	COPY		projection		title 24S + 3P + 16S + 3P	
C					.XXX±.005/0.XX±0.13	INCH/MM		RIGHT ANGLE SOLDER HEADER		product family PwrBlade code 213	
				angles	.XXX±.0020/0.XXX±0.051	scale		size		sheet 2 of 4	
				dr	0°±2°	1:1		dwg no		A 51939-090	
				enr	T. BRUNGARD 11/06/03			scale		cage code 22526	
				chr	M. GRAY 11/06/03						
				appd	M. GRAY 11/06/03						
sheet index	revision sheet										

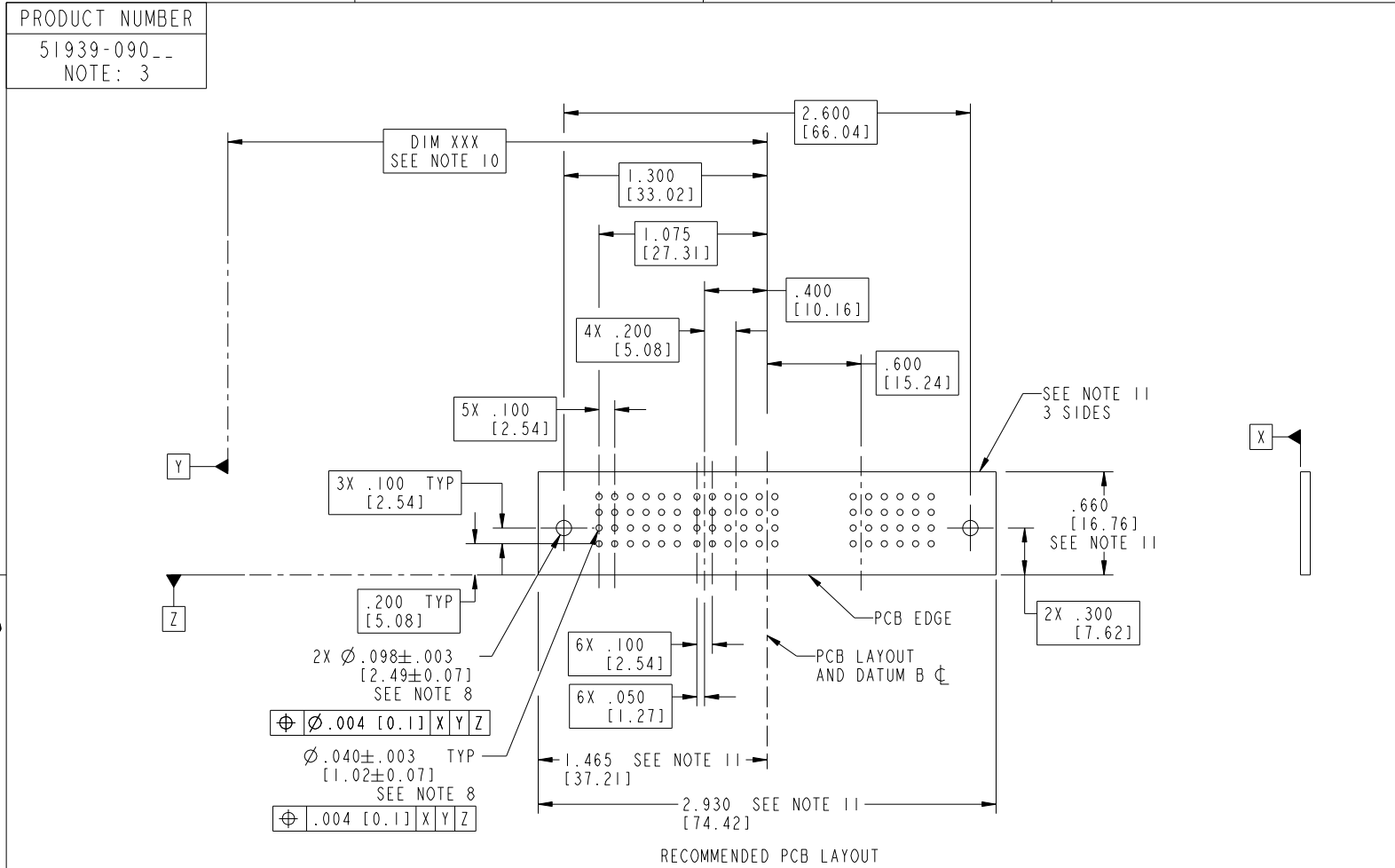
Pro/E

cage code 22526

Tous droits strictement réservés. Reproduction ou communication à des tiers interdite sous quelque forme que ce soit sans autorisation écrite du propriétaire. Propriété de c.FCI. Droits de reproduction FCI.



All rights strictly reserved. Reproduction or issue to third parties in any form whatsoever is not permitted without written authority from the proprietor. Property of FCI. Copyright FCI.



RECOMMENDED PCB LAYOUT

mat'l code		SEE NOTE 2		tolerances unless otherwise specified		CUSTOMER		 www.fciconnect.com	
ltr	ecn no.	dr	date	linear	.XX±.01/0.X±0.3	COPY		title 24S + 3P + 16S + 3P	
C					.XXX±.005/0.XX±0.13	projection		RIGHT ANGLE SOLDER HEADER	
				angles	.XXX±.002/0.XXX±0.051			product family PwrBlade code 213	
				dr	0°±2°	INCH/MM		size dwg no 213	
				enr	T. BRUNGARD 11/06/03	scale		sheet 3 of 4	
				chr	M. GRAY 11/06/03	1:1		51939-090	
				appd	M. GRAY 11/06/03				
sheet index	revision sheet								

cage code 22526

Pro/E

Tous droits strictement reserves. Reproduction ou communication a des tiers interdite sous quelque forme que ce soit sans autorisation écrite du propriétaire. Propriete de c FCI. Droits de reproduction FCI.



All rights strictly reserved. Reproduction or issue to third parties in any form whatever is not permitted without written authority from the proprietor. Property of FCI. Copyright FCI.

PRODUCT NUMBER
51939-090__
NOTE: 3

NOTES:

1. DIMENSIONS AND TOLERANCES ARE IN ACCORDANCE WITH ASME Y14.5M, 1994 UNLESS OTHERWISE SPECIFIED.

CONNECTOR NOTES:

- 2. HOUSING MATERIAL: UL 94 V-0 GLASS FILLED HIGH-TEMP THERMOPLASTIC
POWER CONTACT MATERIAL: COPPER ALLOY
SIGNAL PIN MATERIAL: COPPER ALLOY

3. SEE ITEM 1 & 2 IN PRINT 10064183 FOR PLATING SPEC OF 51939-090 AND 51939-090LF RESPECTIVELY.

- 4. MANUFACTURER'S NAME, P/N, AND DATE CODE TO APPEAR ON THIS SURFACE.

5. PRODUCT SPECIFICATION GS-12-149.
APPLICATION SPECIFICATION BUS-20-067.

6. PACKAGED IN TRAYS.

PCB NOTES:

7. ALL HOLE DIAMETERS ARE FINISHED HOLE SIZE.

- 8. MOUNTING HOLES, WHERE APPLICABLE, ARE UNPLATED.

- 9. $\varnothing .0453 \pm .0010$ [1.151 \pm 0.025] DRILLED HOLES PLATED WITH
.0003 [0.008] MIN SnPb OVER .001 [0.03]
TO .003 [0.08] Cu PLATING TO ACHIEVE
 $\varnothing .040 \pm .003$ [1.02 \pm .07] HOLE.

- 10. "DIM XXX" TO BE DETERMINED BY THE CUSTOMER.

- 11. CONNECTOR KEEP-OUT ZONE.

12. A Δ SYMBOL WILL BE NEXT TO ANY DIMENSION, VIEW, OR NOTE WHICH HAS BEEN MODIFIED WITH THE CURRENT DRAWING REVISION.

mat'l code		SEE NOTE 2		tolerances unless otherwise specified		CUSTOMER		FCI		www.fciconnect.com	
ltr	ecn no.	dr	date	linear	.XX±.01/0.X±0.3	COPY		projection			
C					.XXX±.005/0.XX±0.13	INCH/MM		title 24S + 3P + 16S + 3P			
				angles	.XXX±.002/0.XXX±0.051	1:1		RIGHT ANGLE SOLDER HEADER			
				dr	0°±2°	scale		product family		code	
				enr	T. BRUNGARD 11/06/03	A		PwrBlade		213	
				chr	M. GRAY 11/06/03	size		dwg no		sheet	
				appd	M. GRAY 11/06/03	A		51939-090		4 of 4	
sheet index	revision sheet										

cage code 22526