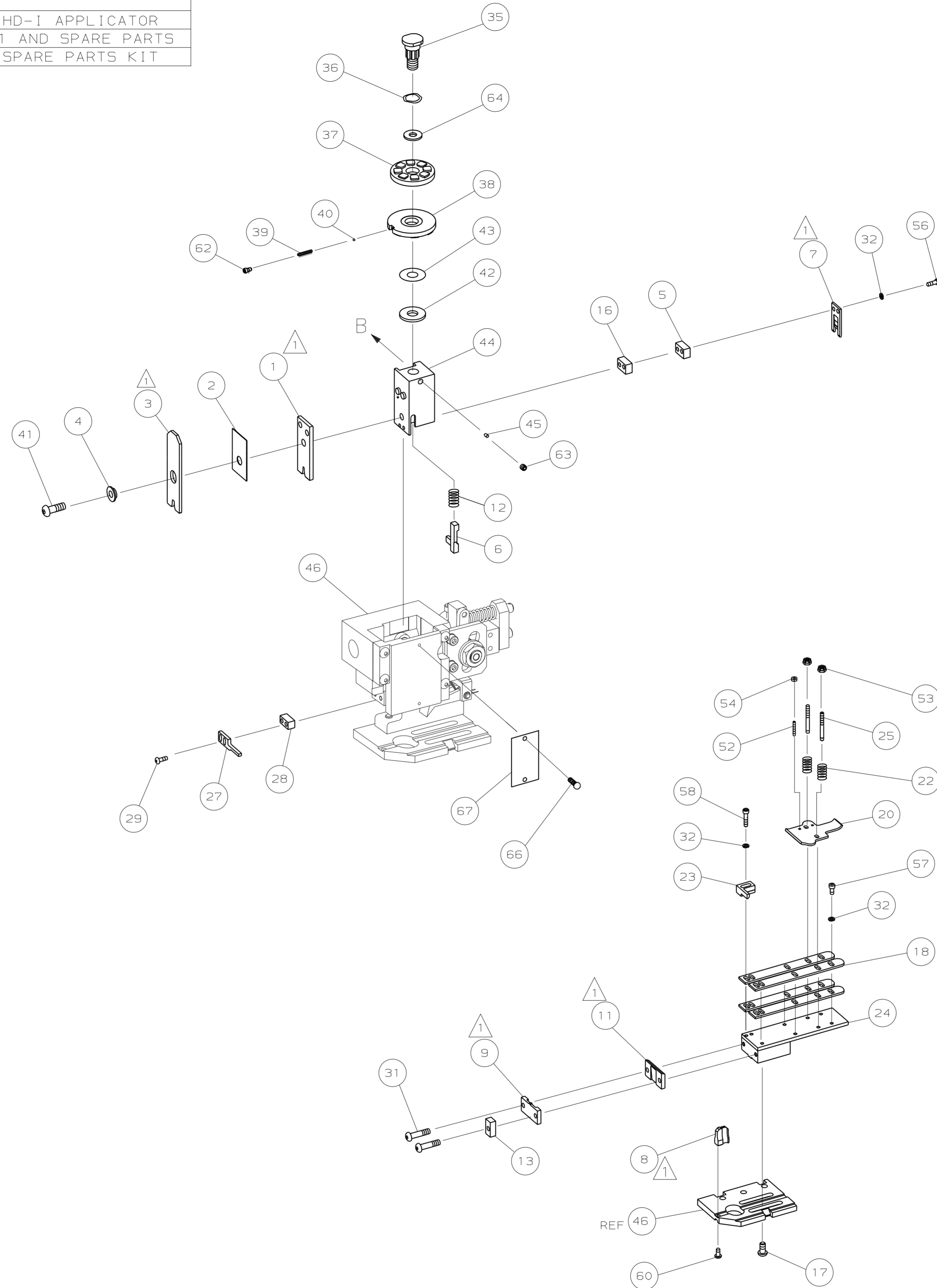


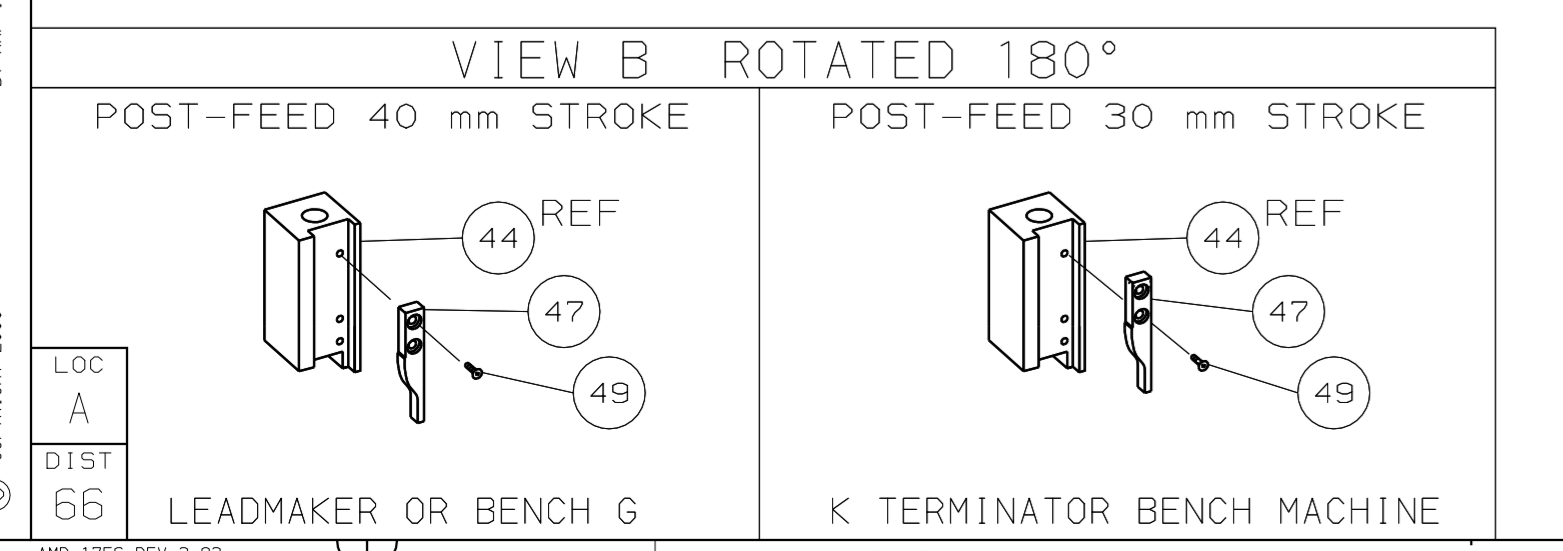
PART NUMBER	REV	FIRST USED	TERMINATOR	FEED TYPE	DESCRIPTION
1339510-1	C		BENCH & LEADMAKER	MECH POST FEED	HD-I APPLICATOR
7-1339510-1	C		BENCH & LEADMAKER	MECH POST FEED	-1 AND SPARE PARTS
7-1339510-7	A				SPARE PARTS KIT

CRIMP DATA (AMP TERMINAL)			
TERMINAL NAME: FASTIN-FASTON REC. SERIES 9.5			
CRIMP	SIZE	TYPE	RANGE
WIRE	3.56 [.140 IN]	F	2.50 - 4.00mm <sup>2</sup>
INSUL	5.33 [.210 IN]	F	3.30-4.50 [.130-.177 IN]
WIRE STRIP LENGTH		APPL INSTRUCTION	
7.20 [.283 IN]		408-8323	
TERMINAL		FEED	
APPL SPEC 114-18022		28.80 [.1134 IN]	
TERMINALS APPLIED			
962834	-	-	-
-	-	-	-
-	-	-	-
-	-	-	-
-	-	-	-
-	-	-	-
-	-	-	-
-	-	-	-
-	-	-	-
WIRE SIZE	CRIMP HEIGHT	PIN PN & LENGTH [IN]	
mm <sup>2</sup> AWG			
4.00mm <sup>2</sup>	2.48 ±0.05 [.098 ±.002 IN]	5-354778-0 [.2745]	
3.50mm <sup>2</sup>	2.38 ±0.05 [.094 ±.002 IN]	6-354778-1 [.2800]	
3.00mm <sup>2</sup>	2.28 ±0.05 [.090 ±.002 IN]	7-354778-1 [.2850]	
2.50mm <sup>2</sup>	2.18 ±0.05 [.086 ±.002 IN]	7-354778-3 [.2860]	



QTY	REV	PART NO	DESCRIPTION	ITEM NO		
-	1	1	1339510	PRINT, APPLICATOR LOG SHEET	73	
-	1	1	1338705-2	DOCUMENTATION PACKAGE	72	
					70	
					68	
-	1	1	461264-1	PLATE, IDENTIFICATION	67	
-	2	2	21017-2	SCR,DRIVE (#2X.19) ID PLATE	66	
					65	
-	1	1	986950-1	WASHER, FLAT PRECISION	64	
-	1	1	3-18031-0	SCR,SKT SET (M6X6) RAM	63	
-	1	1	18023-9	SCR,SKT CAP (M4X6) CP DSC	62	
					61	
-	1	1	18024-7	SCR,BHC (M4X10) ANVIL	60	
					59	
-	2	2	1-18023-4	SCR,SHC (M4X20) HOLD DOWN	58	
-	5	5	1-18023-1	SCR,SHC (M4X10) STRIP GUIDE	57	
-	2	2	1-18023-4	SCR,SHC (M4X20) SLUG BLADE	56	
					55	
-	2	2	18029-1	NUT, HEX (M3) DRAG	54	
-	2	2	986965-1	NUT, HEX SL (M4) DRAG STUD	53	
-	2	2	2-18032-2	SCR,SKT SET (M3X10) DRAG	52	
					51	
					50	
-	1	1	18024-3	SCR,BHC (M3X10) CAM	49	
					48	
-	1	1	1338676-1	CAM, POST-FEED 30 & 40 mm ST	47	
-	1	1	1338662-2	APPLICATOR, BASIC (SUBASSY)	46	
-	1	1	690191-1	PLUG, NYLON	45	
-	1	1	1320998-1	RAM	44	
-	1	1	690125-1	WASHER, LAMINATED	43	
-	1	1	690124-1	WASHER, RAM	42	
-	1	1	2-18024-6	SCREW,BHC (M8X25) CRIMPER	41	
-	1	1	23241-1	BALL, STEEL	40	
-	1	1	2-22278-7	SPRING, COMPRESSION	39	
-	1	1	1320922-1	DISC, INSULATION	38	
-	1	1	354777-1	WIRE DISC, PLASTIC	37	
-	1	1	22480-5	WASHER, SPRING	36	
-	1	1	690212-1	POST, RAM	35	
					34	
					33	
-	9	9	18025-2	WASHER, LOCK (M4) SHEAR BL	32	
-	2	2	1-18024-0	SCR,BHC (M4X20) SHEAR PL	31	
					30	
-	2	2	18024-8	SCR,BHC (M4X12) STRIPPER	29	
-	1	1	1-690451-7	SPACER, STRIPPER	28	
-	1	1	690455-6	STRIPPER	27	
					26	
-	2	2	1320906-1	DRAG, STUD	25	
-	1	1	1320995-6	STRIP GUIDE	24	
-	1	1	240825-2	PLATE, STRIP HOLD DOWN	23	
-	2	2	4-22281-1	SPRING, DRAG	22	
					21	
-	1	1	1338665-1	DRAG, STOCK	20	
					19	
-	4	4	1338663-4	GUIDE, LOWER STRIP	18	
-	4	4	1-18024-8	SCR,BHC (M6X12) STRIP GD PL	17	
-	1	1	1338708-1	SPACER, SLUG BLADE	16	
					15	
					14	
-	1	1	690481-2	SPACER, HOLD DOWN	13	
-	1	1	23846-1	SPRING, HOLD DOWN	12	
-	1	1	240833-3	PLATE, REAR SHEAR	11	
					10	
-	1	1	690482-5	PLATE, FRONT SHEAR	9	
-	1	2	1	1333222-1	ANVIL	8
-	1	1	3-690474-6	BLADE, SLUG	7	
-	1	1	4-455892-0	HOLD DOWN, TERMINAL	6	
-	1	1	5-240641-5	SPACER, SLUG BLADE	5	
-	1	1	238009-1	SPACER, BLOCK CRIMPER	4	
-	1	2	1	1-456134-1	CRIMPER, INSULATION	3
-	1	1	1	1-455888-7	SPACER, CRIMPER	2
-	1	2	1	456425-2	CRIMPER, WIRE	1

- RECOMMENDED SPARE PARTS.
- GREASE RAM, CAM, CAM FOLLOWER AND FEED ROD LIGHTLY.
  - LUBRICATE DAILY PER THE APPLICATOR INSTRUCTION SHEET SUPPLIED WITH THE APPLICATOR.
  - WIRE RANGE FOR TERMINAL 962834 IS >2.50-4.00mm<sup>2</sup> & ALTHOUGH 2.50mm<sup>2</sup> WIRE CAN BE SUCCESSFULLY APPLIED IN THIS PRODUCT, THE RECOMMENDED TERMINAL FOR USE WITH THIS WIRE SIZE IS 962835 (WHICH HAS A WIRE RANGE OF >1.00-2.50mm<sup>2</sup>).



DIMENSIONS: mm [INCHES]		MATL	HT TR	FIN
DO NOT SCALE PRINT.				
TOLERANCES UNLESS OTHERWISE SPECIFIED:				
1	PLC DEC ±			
2	PLC DEC ±			
3	PLC DEC ±			
ANGLES ±				
SURF TEXTURE: ✓				
REMOVE BURRS, BREAK SHARP EDGES RO.38 MAX				
CAGE CODE	00779			
SCALE	D	DWG NO	1339510	SHEET 1 OF 1
REV	C			

THIS DRAWING IS A CONTROLLED DOCUMENT.

LAYOUT L1339510  
SET UP GAGE 458638-3

2000  
RELEASED FOR PUBLICATION  
BY AMP INCORPORATED. ALL RIGHTS RESERVED.  
THIS DRAWING IS UNPUBLISHED.  
AMP 1756 REV 3-92

1339510  
D  
C  
B  
A