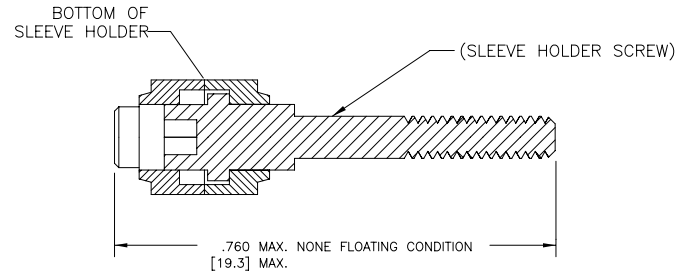
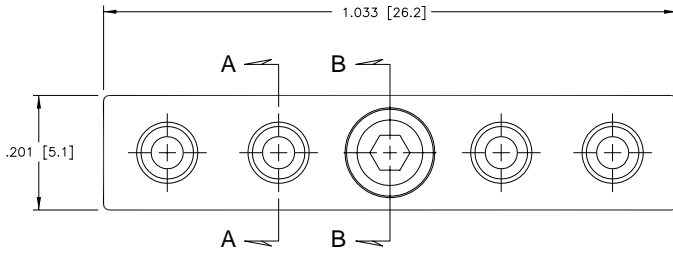


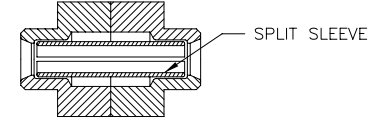
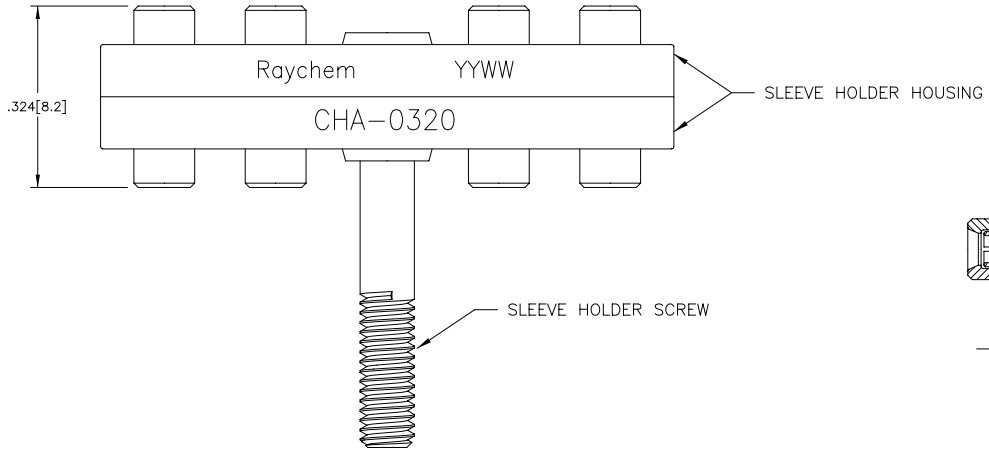


TYCO ELECTRONICS RESERVES THE RIGHT TO AMEND THIS DRAWING AT ANY TIME. USERS SHOULD EVALUATE THE SUITABILITY OF THE PRODUCT FOR THEIR APPLICATION.

REVISIONS			
LTR	DESCRIPTION	DATE	APPROVED
A	INITIAL RELEASE PER DCR# C070003	Jan/15/07	M.HIGGY



SECTION B-B



SECTION A-A

NOTES:

- MATERIALS:
  - SLEEVE HOLDER HOUSING: ALUMINUM ALLOY 6061-T651
  - SLEEVE HOLDER SCREW: CORROSION RESISTANCE STEEL, PER SAE-AMS 5737 A286, OR AMS 5640 A320
  - SPLIT SLEEVE: YTTRIA (3 mol % average) -PARTIALLY STABILIZED ZIRCONIA
- FINISH:
  - SLEEVE HOLDER HOUSING: ANODIZED PER MIL-A-8625, TYPE II, CLASS II. COLOR: GOLD
  - SLEEVE HOLDER SCREW: PASSIVATED PER SAE-AMS 2700, (TYPE II, METHOD I FOR A286), OR (TYPE 6, CLASS I FOR A320)

**SPECIFICATION CONTROL DRAWING**

If this document is printed it becomes uncontrolled. Check for the latest revision

© 2007 Tyco Electronics Corporation. All rights reserved.

UNLESS OTHERWISE SPECIFIED DIMENSIONS ARE IN INCHES. METRIC DIMENSIONS ARE IN BRACKETS.  DECIMALS .XXX ± 0.005 [ 0.13 mm] .XX ± 0.01 [ 0.25 mm] .X ± 0.1 [ 0.50 mm]  ANGLES .X ± 0.5 DEG	DRAWN ZSOFIA.ORBAN Jan/9/07		Tyco Electronics Corporation 300 Constitution Drive Menlo Park, CA. 94025 U.S.A.	Raychem
	CHECKED			
	APPROVED M.HIGGY Jan/9/07	TITLE SLEEVE HOLDER ASSEMBLY SOCKET INSERT, 4 CAVITIES, 1-INCH MTCT-SERIES		
	CAD NAME: C070003.DWG	SIZE A CODE IDENT. NO. 06090 DWG. NO. CHA-0320	REV: A	
THIRD ANGLE PROJECTION		DO NOT SCALE THIS DRAWING		

